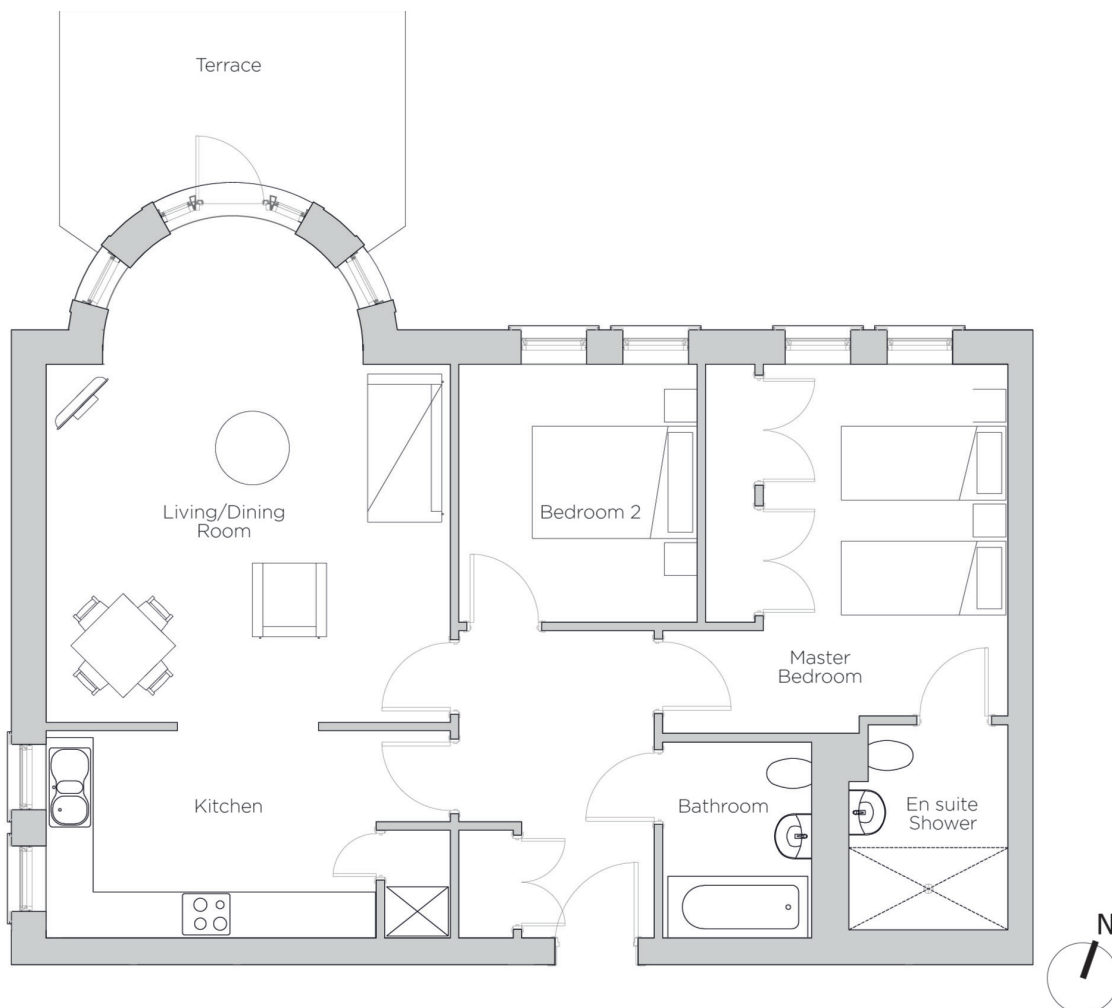


Audley Redwood

5 Smyth Court
First Floor Apartment
Plot 81



| Internal Measurements | Metric (m) | Imperial (ft) |
|------------------------------|-------------|---------------|
| Living/Dining Room (ex. bay) | 4.91 x 4.36 | 16'1" x 14'4" |
| Kitchen | 4.91 x 2.53 | 16'1" x 8'3" |
| Master Bedroom | 4.28 x 2.98 | 14'1" x 9'9" |
| Bedroom 2 | 3.14 x 2.90 | 10'4" x 9'6" |
| Terrace (approx) | 4.20 x 2.10 | 13'9" x 6'11" |



Audley Redwood
Beggar Bush Lane, Failand, Bristol BS8 3TG
01275 217 797
www.audleyvillages.co.uk

These floorplans are illustrative and for marketing purposes only. Maximum measurements are shown. Wardrobes not included in the overall room dimensions. Furniture shown to illustrate possible room layouts and not included in sale. Designs vary according to plot. All details should be checked at the Sales Office.
14 March 2017



Audley Redwood

5 Smyth Court
First Floor Apartment
Plot 81



Two bedroom, ground floor apartment

This spacious ground floor apartment has a private terrace accessed from the living/dining room. The luxury kitchen is open plan and has integrated appliances. The master bedroom has an en suite with a level access walk-in shower.

Property specifications:

- Ground floor apartment with a private terrace
- SieMatic kitchen open plan with large living/dining room
- Master bedroom with fitted wardrobes and en suite
- Villeroy & Boch guest bathroom
- Large second double bedroom
- Hallway storage

Audley Redwood
Beggar Bush Lane, Failand, Bristol BS8 3TG
01275 217 797
www.audleyvillages.co.uk

