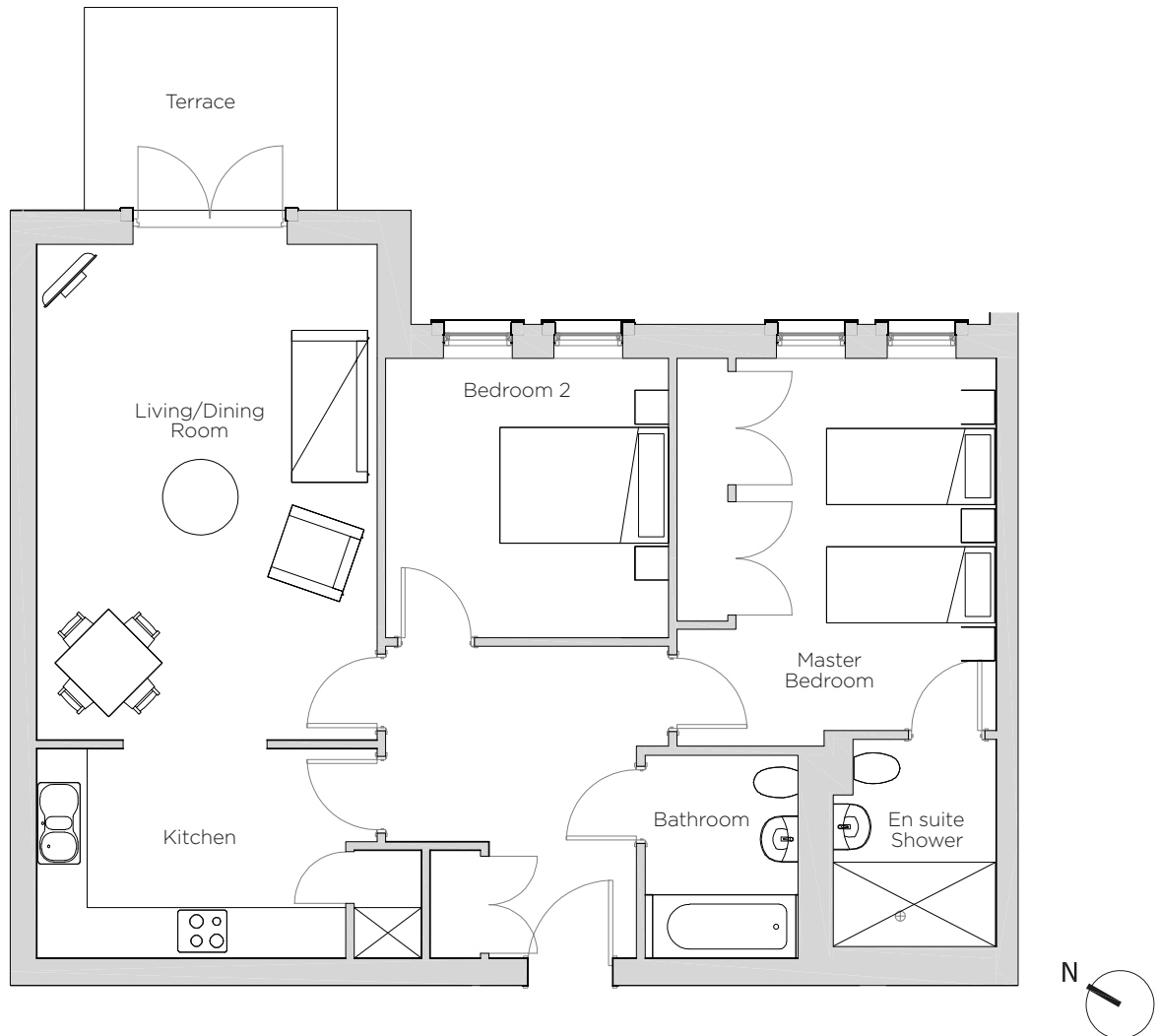


# Audley Redwood

4 Whitebeam Court  
Ground Floor Apartment  
Plot 113



Internal Measurements	Metric (m)	Imperial (ft)
Living/Dining Room	5.87 x 4.04	19'3" x 13'3"
Kitchen	3.73 x 2.48	12' x 8'2"
Master Bedroom	4.40 x 3.09	14'5" x 10'2"
Bedroom 2	3.37 x 3.31	11'2" x 10'10"
Terrace (approx)	3.00 x 2.40	9'10" x 7'10"



Audley Redwood  
Beggar Bush Lane, Failand, Bristol BS8 3TG  
01275 217 797  
[www.audleyvillages.co.uk](http://www.audleyvillages.co.uk)

These floorplans are illustrative and for marketing purposes only. Maximum measurements are shown. Wardrobes not included in the overall room dimensions. Furniture shown to illustrate possible room layouts and not included in sale. Designs vary according to plot. All details should be checked at the Sales Office.  
4 April 2017



# Audley Redwood

4 Whitebeam Court  
Ground Floor Apartment  
Plot 113



## 2 bedroom, ground floor apartment

This ground floor apartment has a private terrace which is accessed from the large living/dining room. This room also has an option to be opened out with the kitchen, which has SieMatic handleless units and integrated appliances.

Property specifications:

- Luxury SieMatic kitchen
- Large living/dining room with private terrace
- Master bedroom with en suite shower room
- Second double bedroom
- Guest bathroom
- Hallway storage

Audley Redwood  
Beggar Bush Lane, Failand, Bristol BS8 3TG  
01275 217 797  
[www.audleyvillages.co.uk](http://www.audleyvillages.co.uk)

