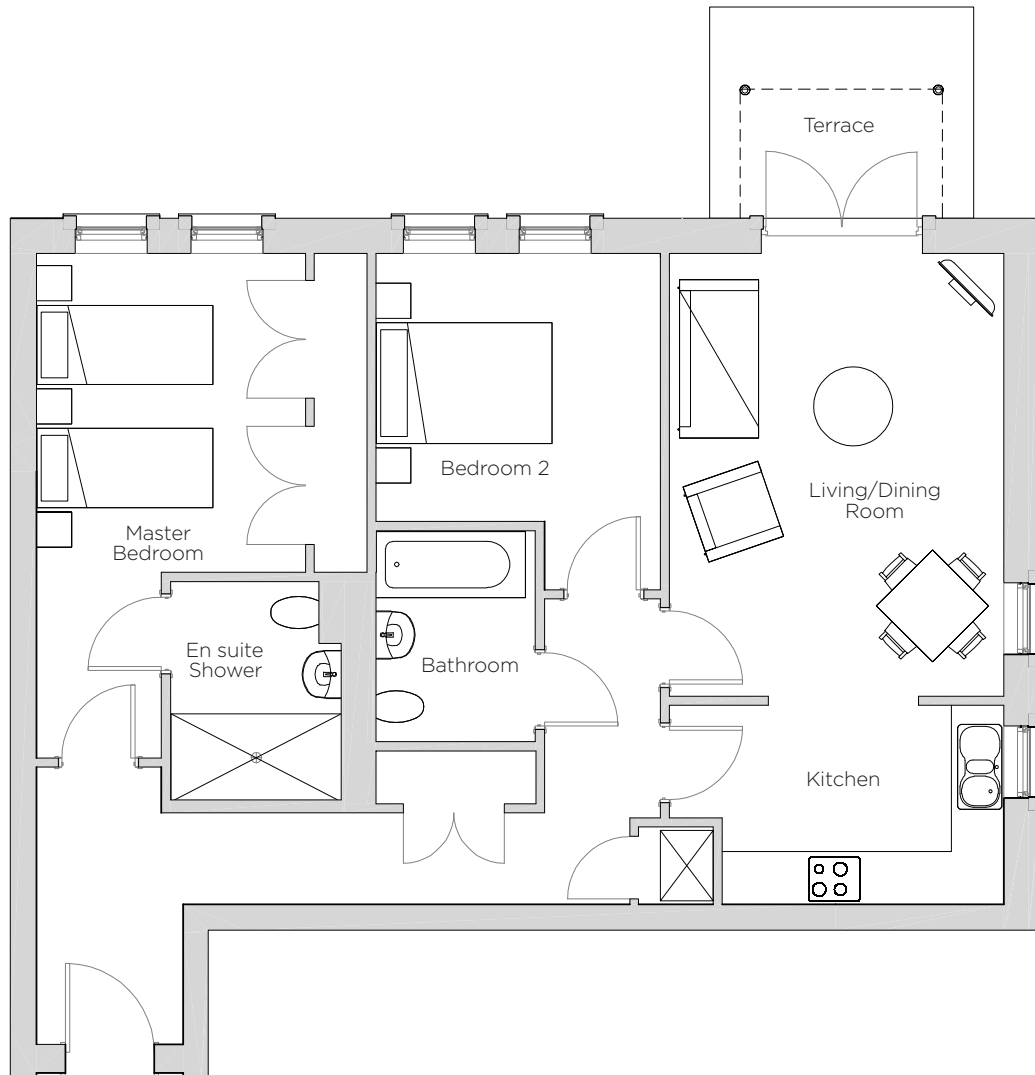


Audley Redwood

2 Whitebeam Court
Ground Floor Apartment
Plot 111



Internal Measurements	Metric (m)	Imperial (ft)
Living/Dining Room	5.03 x 3.80	16'6" x 12'6"
Kitchen	3.80 x 2.27	12'6" x 7'5"
Master Bedroom	3.62 x 3.06	11'11" x 10'0"
Bedroom 2	3.24 x 3.05	10'7" x 10'0"
Terrace (approx)	3.00 x 2.40	9'10" x 7'10"



Audley Redwood
Beggar Bush Lane, Failand, Bristol BS8 3TG
01275 217 797
www.audleyvillages.co.uk

These floorplans are illustrative and for marketing purposes only. Maximum measurements are shown. Wardrobes not included in the overall room dimensions. Furniture shown to illustrate possible room layouts and not included in sale. Designs vary according to plot. All details should be checked at the Sales Office.
4 April 2017



Audley Redwood

2 Whitebeam Court
Ground Floor Apartment
Plot 111



2 bedroom, ground floor apartment

Located close to the woodland walk, this ground floor apartment has a private terrace. It is accessed from living/dining room which is open plan with the kitchen. The master bedroom has an en suite walk-in shower and there is an additional guest bathroom.



Property specifications:

- Open plan kitchen and living room with terrace
- Master bedroom with fitted double wardrobes and en suite
- Second double bedroom
- Villeroy & Boch guest bathroom
- Hallway storage
- Ground floor apartment

Audley Redwood
Beggars Bush Lane, Failand, Bristol BS8 3TG
01275 217 797
www.audleyvillages.co.uk

