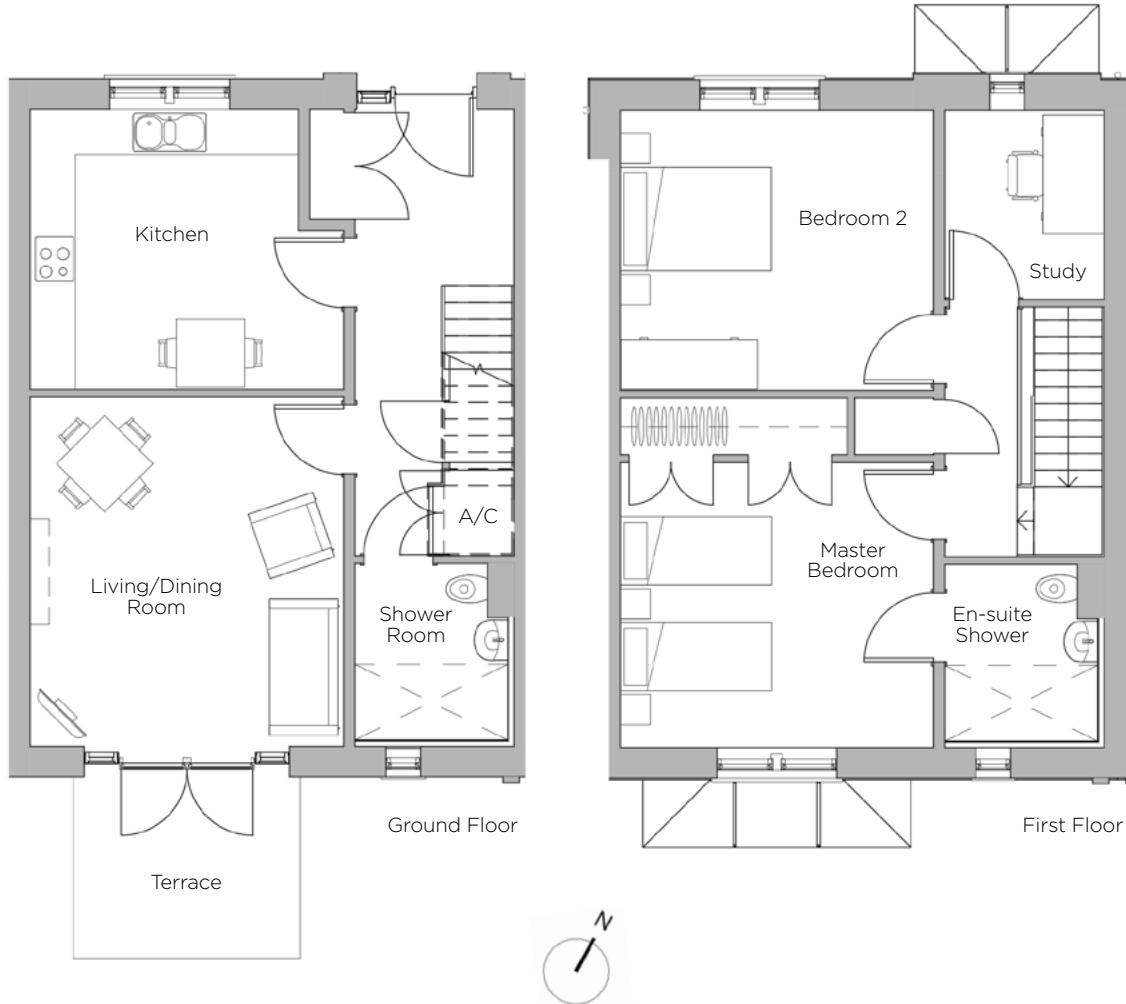


Audley Redwood

17 Redwood Drive
Cottage
Plot 18



Internal Measurements

Metric (m)

Imperial (ft)

Living/Dining Room	4.62m x 4.14m	15'2" x 13'7"
Kitchen	4.14m x 3.70m	13'7" x 12'2"
Master Bedroom	4.14m x 3.77m	13'7" x 12'4"
Bedroom 2	4.14m x 3.70m	13'7" x 12'2"
Study	2.50m x 2.10m	8'2" x 6'11"
Terrace (approx)	3.00m x 2.40m	9'10" x 7'10"

Audley Redwood
Beggar Bush Lane, Failand, Bristol BS8 3TF
01275 217 797
www.audleyvillages.co.uk

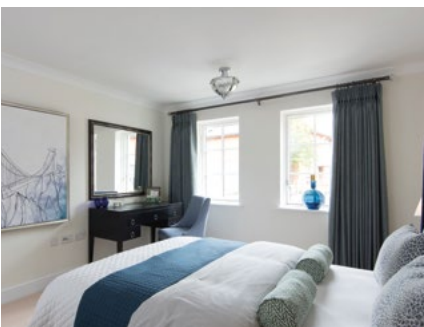


Built-in wardrobes in bedrooms have not been included in the overall dimensions.
Maximum measurements shown. These pages are intended for marketing purposes only.
Designs vary according to plot and all details should be checked at the Sales Office.
June 2018



Audley Redwood

17 Redwood Drive
Cottage
Plot 18



2 bedroom cottage with study

Set across two floors this cottage has a good sized living/dining room leading out onto a private terrace, a spacious luxury kitchen and a shower room all on the ground floor. The upstairs comprises of a master bedroom with en-suite shower room, a spacious second bedroom and a study.

Property specifications:

- Large kitchen with space for a breakfast table
- Well proportioned living/dining area with patio doors to terrace
- Separate study
- Downstairs shower room
- Large master bedroom with double fitted wardrobes and en-suite shower
- Spacious second double bedroom

Audley Redwood
Beggar Bush Lane, Failand, Bristol BS8 3TF
01275 217 797
www.audleyvillages.co.uk

