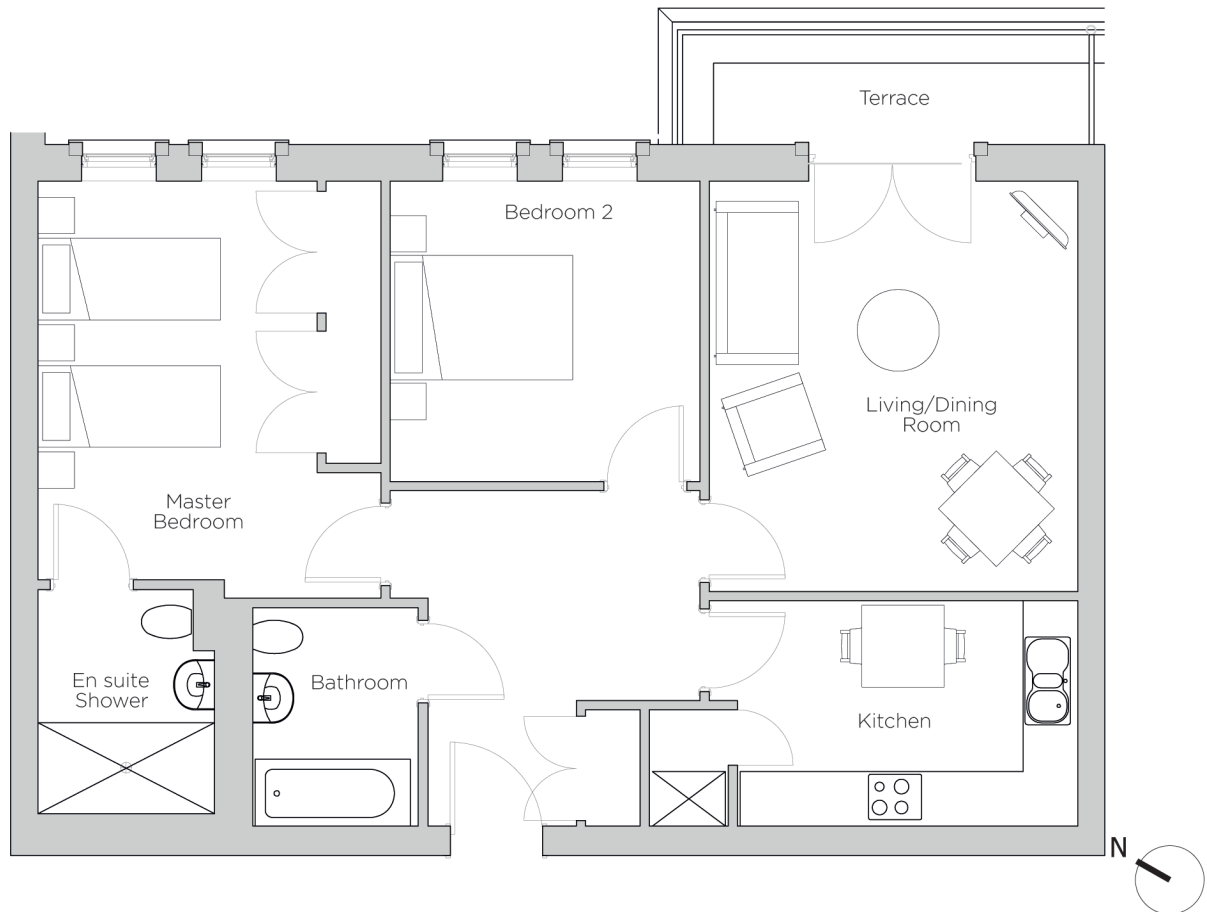


Audley Redwood

15 Whitebeam Court
Second Floor Apartment
Plot 124



Internal Measurements

Metric (m)

Imperial (ft)

Living/Dining Room	4.52 x 4.04	14'10" x 13'3"
Kitchen	3.73 x 2.48	12'3" x 8'2"
Master Bedroom	4.39 x 3.06	14'5" x 10'1"
Bedroom 2	3.40 x 3.31	11'2" x 10'10"
Terrace (approx)	4.46 x 1.21	14'7" x 4'



Audley Redwood
Beggars Bush Lane, Failand, Bristol BS8 3TG
01275 217 797
www.audleyvillages.co.uk

These floorplans are illustrative and for marketing purposes only. Maximum measurements are shown. Wardrobes not included in the overall room dimensions. Furniture shown to illustrate possible room layouts and not included in sale. Designs vary according to plot. All details should be checked at the Sales Office.
4 April 2017



Audley Redwood

15 Whitebeam Court
Second Floor Apartment
Plot 124



Two bedroom, second floor apartment

This two bedroom, second floor apartment is located close to the woodland walk. The master bedroom has an en suite and double fitted wardrobes, and the second room is a good size double. There is a private terrace accessed from the living/dining room.

Property specifications:

- Luxury SieMatic kitchen with integrated appliances
- Private terrace accessible from the living/dining room
- Master bedroom with fitted wardrobes
- Villeroy & Boch guest bathroom and en suite from master bedroom
- Second double bedroom
- Hallway storage

Audley Redwood
Beggar Bush Lane, Failand, Bristol BS8 3TG
01275 217 797
www.audleyvillages.co.uk

