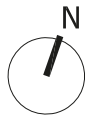
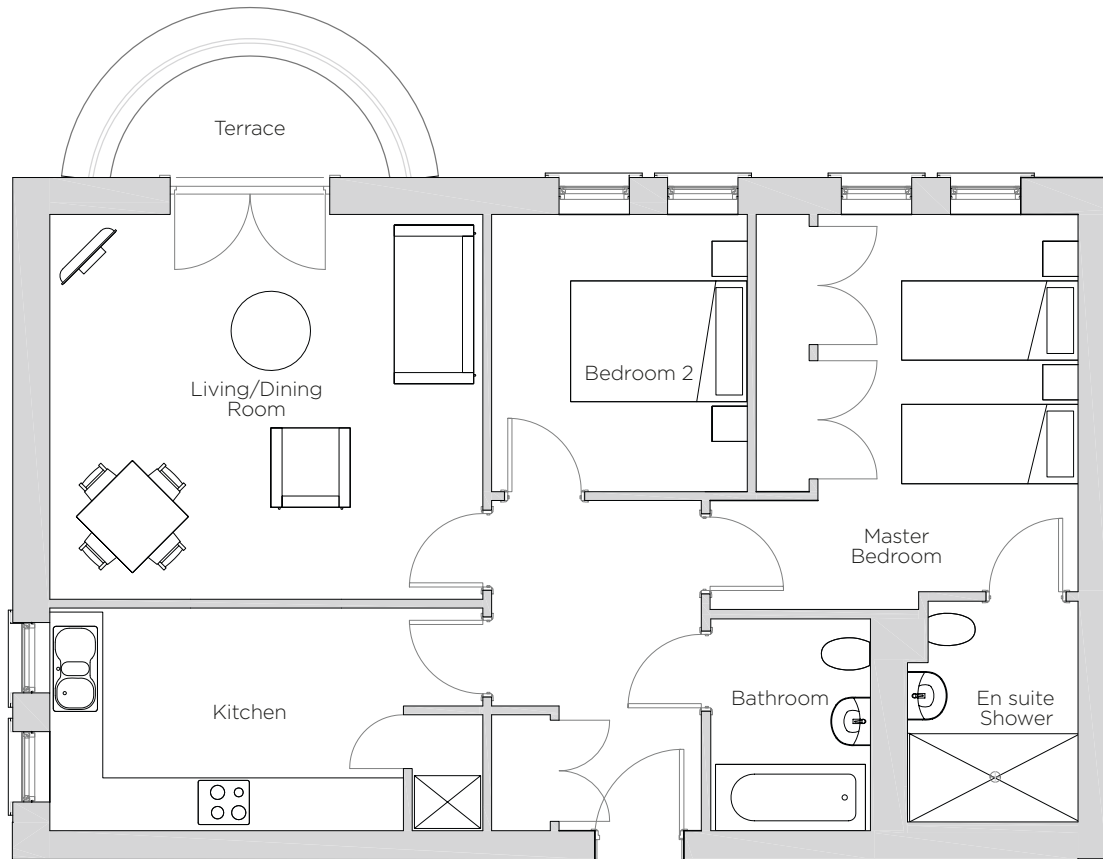


# Audley Redwood

15 Smyth Court  
Second Floor Apartment  
Plot 91



Internal Measurements	Metric (m)	Imperial (ft)
Living/Dining Room	4.91 x 4.36	16'1" x 14'4"
Kitchen	4.91 x 2.53	16'1" x 8'3"
Master Bedroom	4.28 x 2.95	14'1" x 9'8"
Bedroom 2	3.14 x 2.90	10'4" x 9'6"
Terrace (approx)	3.00 x 1.38	10'0" x 4'6"



Audley Redwood  
Beggar Bush Lane, Failand, Bristol BS8 3TG  
01275 217 797  
[www.audleyvillages.co.uk](http://www.audleyvillages.co.uk)

These floorplans are illustrative and for marketing purposes only. Maximum measurements are shown. Wardrobes not included in the overall room dimensions. Furniture shown to illustrate possible room layouts and not included in sale. Designs vary according to plot. All details should be checked at the Sales Office.  
14 March 2017



# Audley Redwood

15 Smyth Court  
Second Floor Apartment  
Plot 91



## 2 bedroom, second floor apartment

The gorgeous second floor apartment has a terrace which looks out across the village. It is accessed from the living/dining room and there is a separate SieMatic kitchen. There are two double bedrooms and Villeroy & Boch bathrooms.

Property specifications:

- Luxury SieMatic kitchen with integrated appliances
- Living/dining room with double doors onto terrace
- Master bedroom with en suite
- Second double bedroom
- Guest bathroom



Audley Redwood  
Beggar Bush Lane, Failand, Bristol BS8 3TG  
01275 217 797  
[www.audleyvillages.co.uk](http://www.audleyvillages.co.uk)

