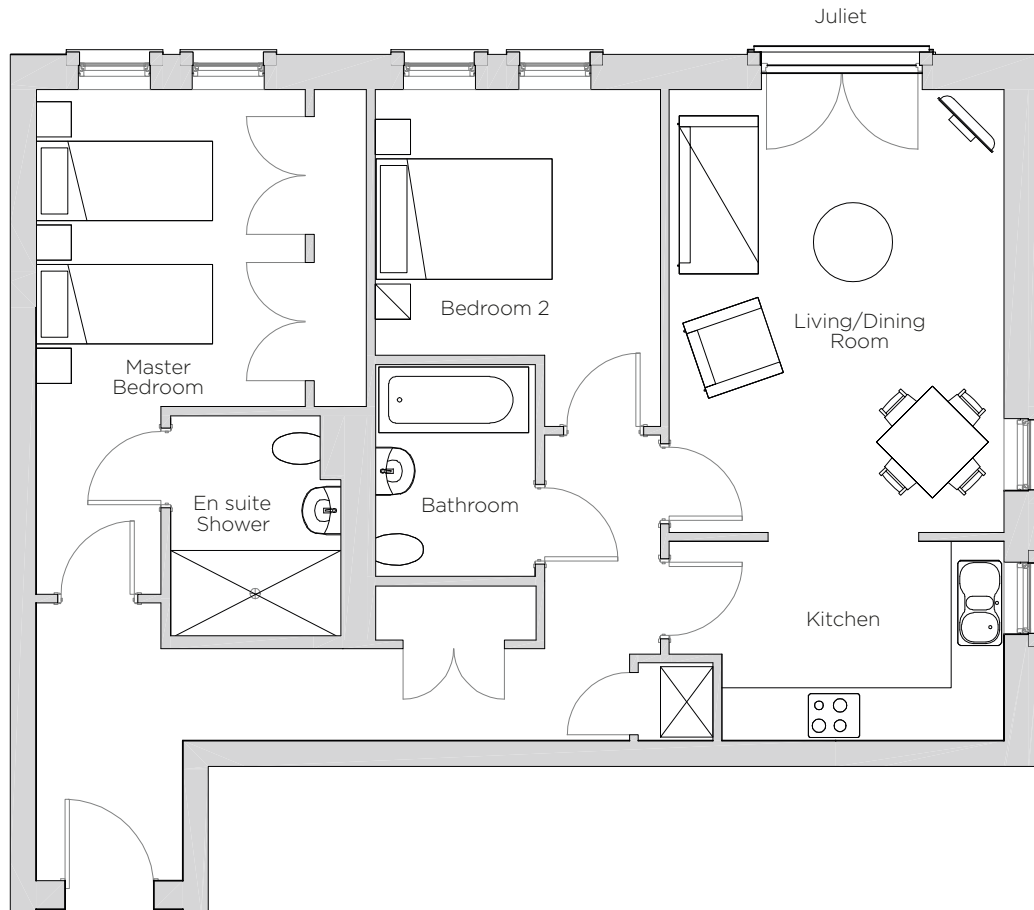


Audley Redwood

14 Whitebeam Court
Second Floor Apartment
Plot 123



Internal Measurements	Metric (m)	Imperial (ft)
Living/Dining Room	5.03 x 3.81	16'6" x 12'6"
Kitchen	2.27 x 3.81	7'5" x 12'6"
Master Bedroom	3.60 x 3.06	11'10" x 10'0"
Bedroom 2	3.24 x 3.02	10'8" x 9'11"



Audley Redwood
Beggar Bush Lane, Failand, Bristol BS8 3TG
01275 217 797
www.audleyvillages.co.uk

These floorplans are illustrative and for marketing purposes only. Maximum measurements are shown. Wardrobes not included in the overall room dimensions. Furniture shown to illustrate possible room layouts and not included in sale. Designs vary according to plot. All details should be checked at the Sales Office.
4 April 2017



Audley Redwood

14 Whitebeam Court
Second Floor Apartment
Plot 123

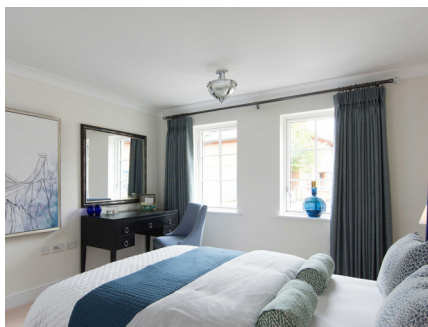


2 bedroom, second floor apartment

Located on the second floor, this two bedroom apartment has a balcony overlooking the woodland walk. The master bedroom has fitted wardrobes and a walk-in shower in the en suite.

Property specifications:

- SieMatic kitchen open plan to living/dining room
- Private balcony accessed from living room
- Master bedroom with en suite
- Good size second room
- Villeroy & Boch bathroom
- Hallway storage
- Located on second floor, with lift and stairs access



Audley Redwood
Beggar Bush Lane, Failand, Bristol BS8 3TG
01275 217 797
www.audleyvillages.co.uk

