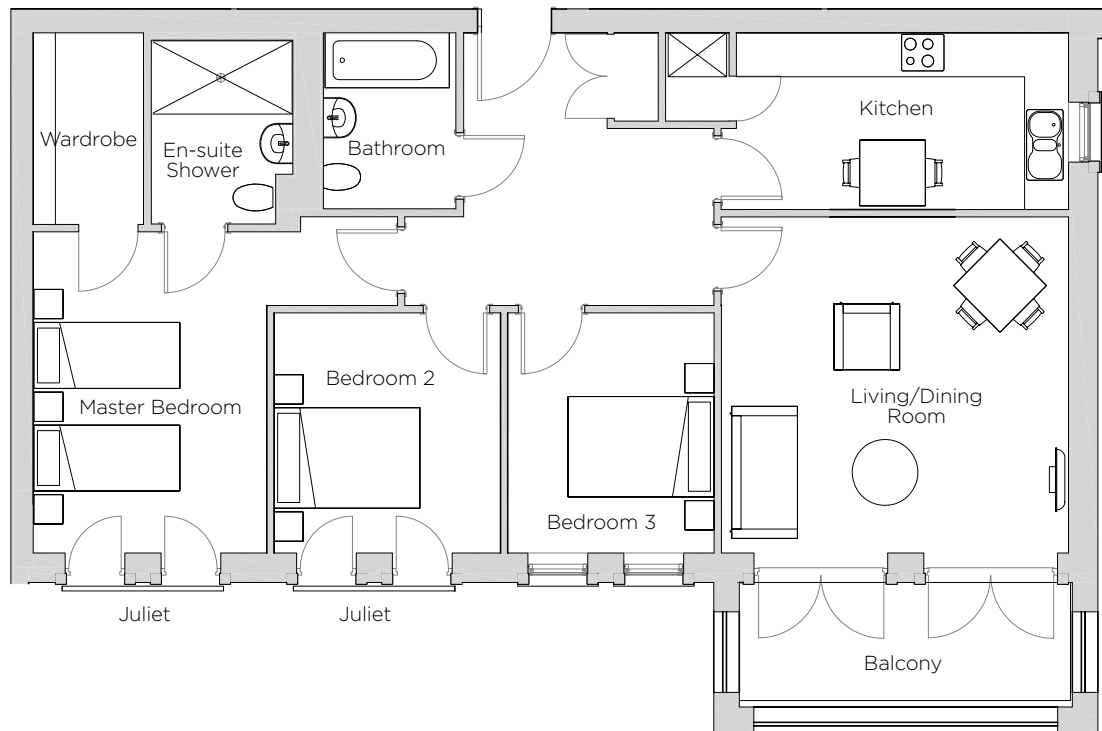


Audley Redwood

12 Whitebeam Court
 First Floor Apartment
 Plot 121



Internal Measurements	Metric (m)	Imperial (ft)
Living/Dining Room	4.69m x 4.59m	15'5" x 15'1"
Kitchen	4.55m x 2.41m	14'11" x 7'11"
Master Bedroom	4.39m x 3.26m	14'9" x 10'8"
Bedroom 2	3.28m x 2.83m	10'9" x 9'3"
Bedroom 3	3.28m x 3.10m	10'9" x 10'2"
Balcony (approx)	4.56m x 1.58m	15' x 5'2"



Audley Redwood
 Beggar Bush Lane, Failand, Bristol BS8 3TF
 01275 217 797
www.audleyvillages.co.uk

Built-in wardrobes in bedrooms have not been included in the overall dimensions.
 Maximum measurements shown. These pages are intended for marketing purposes only.
 Designs vary according to plot and all details should be checked at the Sales Office.
 January 2017



Audley Redwood

12 Whitebeam Court
First Floor Apartment
Plot 121



3 bedroom first floor apartment

A spacious first floor apartment, this property has a south facing balcony accessible from the living/dining room. There are three good size bedrooms, with a walk in wardrobe from the master bedroom.

Property specifications:

- Master bedroom with walk in wardrobe, en-suite walk in shower and south facing Juliet balcony
- Two additional double bedrooms, with south facing Juliet balcony from one
- Villeroy & Boch second bathroom
- Large living/dining room with south facing balcony
- Fully fitted luxury SieMatic kitchen
- Hallway storage

Audley Redwood
Beggars Bush Lane, Failand, Bristol BS8 3TF
01275 217 797
www.audleyvillages.co.uk

