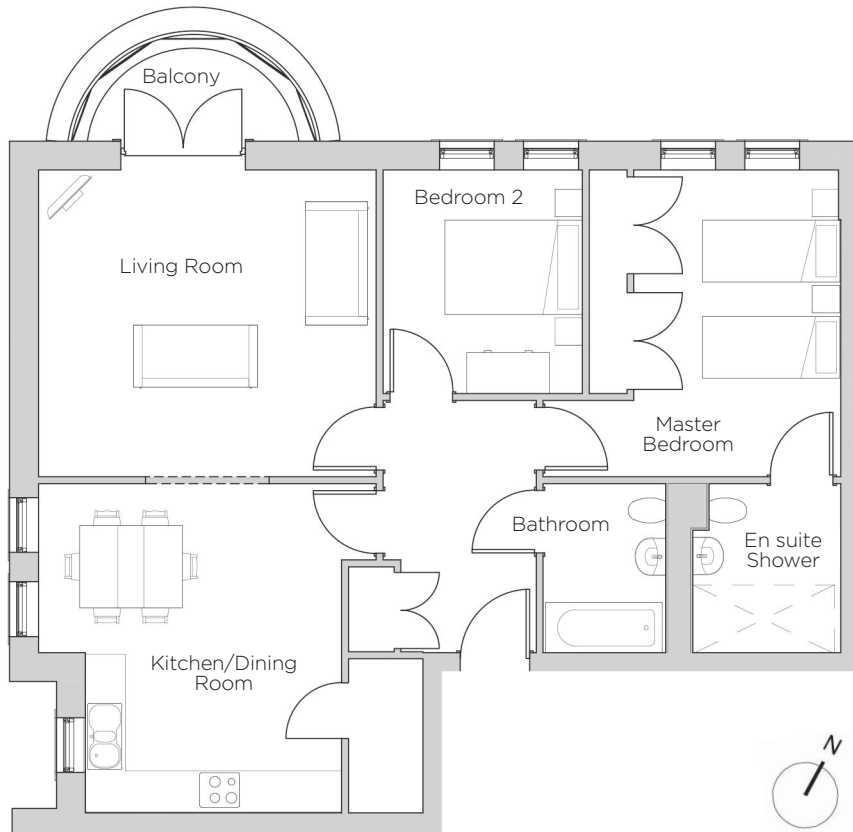
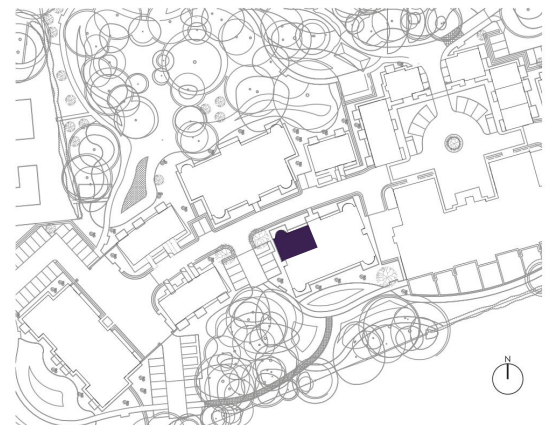


Audley Redwood

12 Marshall Place
Second Floor Apartment
Plot 46



Internal Measurements	Metric (m)	Imperial (ft)
Living Room	4.92 x 4.47	16'1" x 14'8"
Kitchen/Dining Room	4.80 x 4.41	15'9" x 14'6"
Master Bedroom	4.47 x 3.02	14'8" x 9'11"
Bedroom 2	3.26 x 2.90	10'8" x 9'6"
Balcony (approx)	3.08 x 1.56	10'1" x 5'1"



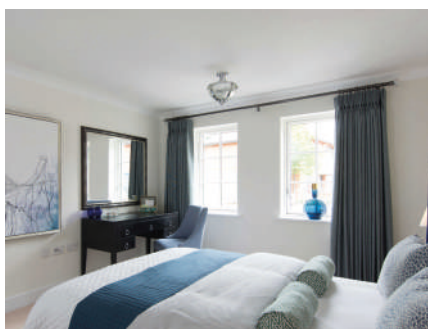
Audley Redwood
Beggar Bush Lane, Failand, Bristol BS8 3TG
01275 217 797
www.audleyvillages.co.uk

Built-in wardrobes in bedrooms have not been included in the overall dimensions.
Maximum measurements shown. These pages are intended for marketing purposes only.
Designs vary according to plot and all details should be checked at the Sales Office.
January 2017



Audley Redwood

12 Marshall Place
Second Floor Apartment
Plot 46



2 bedroom, second floor apartment

This spacious two bedroom second floor apartment has a large living area that leads out onto a private balcony. Thoughtfully designed to ensure space has been maximised whilst keeping a quality feel with a luxury SieMatic kitchen and beautiful Villeroy & Boch bathrooms.

Property specifications:

- Spacious luxury kitchen/dining room with integrated appliances and a pantry
- Master bedroom has built-in double wardrobes and shower en suite
- Second double bedroom
- Second bathroom
- Accessible by stairs or lift

Audley Redwood
Beggar Bush Lane, Failand, Bristol BS8 3TG
01275 217 797
www.audleyvillages.co.uk

