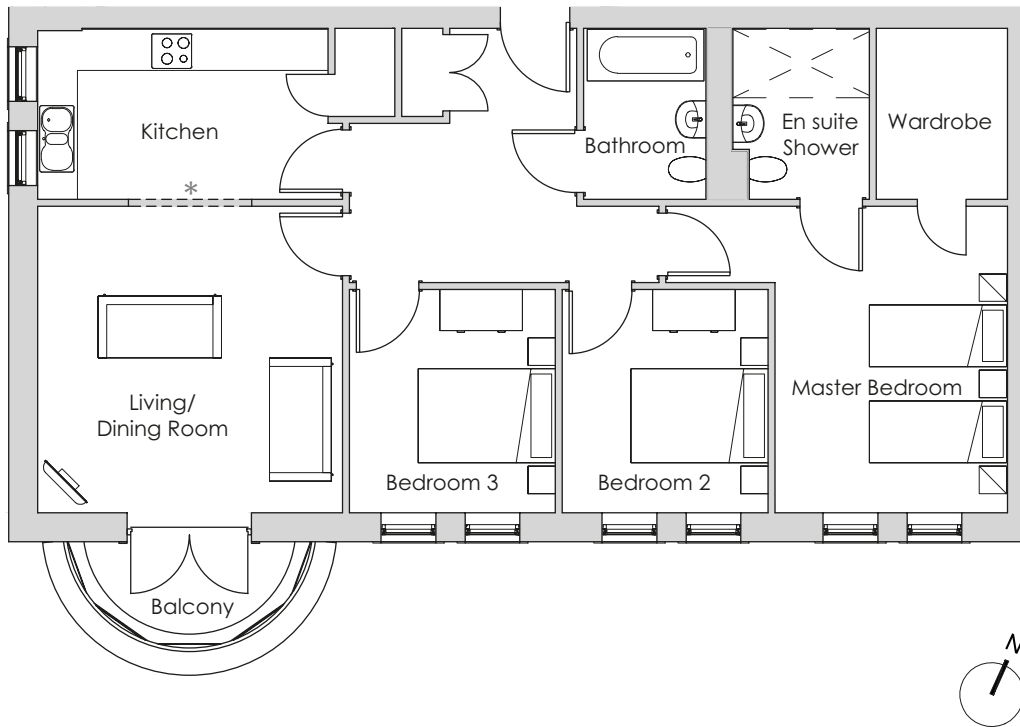


# Audley Redwood

11 Marshall Place  
Second Floor Apartment  
Plot 45



\*Open plan option available

Internal Measurements	Metric (m)	Imperial (ft)
Living/Dining Room	4.47 x 4.45	14'8" x 14'7"
Kitchen	4.24 x 2.49	13'11" x 8'2"
Master Bedroom	4.47 x 3.39	14'8" x 11'1"
Bedroom 2	3.26 x 3.00	10'8" x 9'10"
Bedroom 3	3.26 x 3.00	10'8" x 9'10"
Balcony (approx)	3.08 x 1.56	10'1" x 5'1"



Audley Redwood  
Beggar Bush Lane, Failand, Bristol BS8 3TG  
01275 217 797  
[www.audleyvillages.co.uk](http://www.audleyvillages.co.uk)

Built-in wardrobes in bedrooms have not been included in the overall dimensions.  
Maximum measurements shown. These pages are intended for marketing purposes only.  
Designs vary according to plot and all details should be checked at the Sales Office.  
April 2016



# Audley Redwood

11 Marshall Place  
Second Floor Apartment  
Plot 45



## 3 bedroom second floor apartment

This light and spacious apartment has a south-facing living/dining room with a private balcony overlooking the playing fields behind the village. While the master bedroom has a walk-in wardrobe and an en suite shower.

Property specifications:

- Luxury SieMatic kitchen
- Large living/dining room with balcony
- Master bedroom with walk-in wardrobe and en suite shower room
- Two additional double bedrooms
- Villeroy & Boch guest bathroom

Audley Redwood  
Beggar Bush Lane, Failand, Bristol BS8 3TG  
01275 217 797  
[www.audleyvillages.co.uk](http://www.audleyvillages.co.uk)

