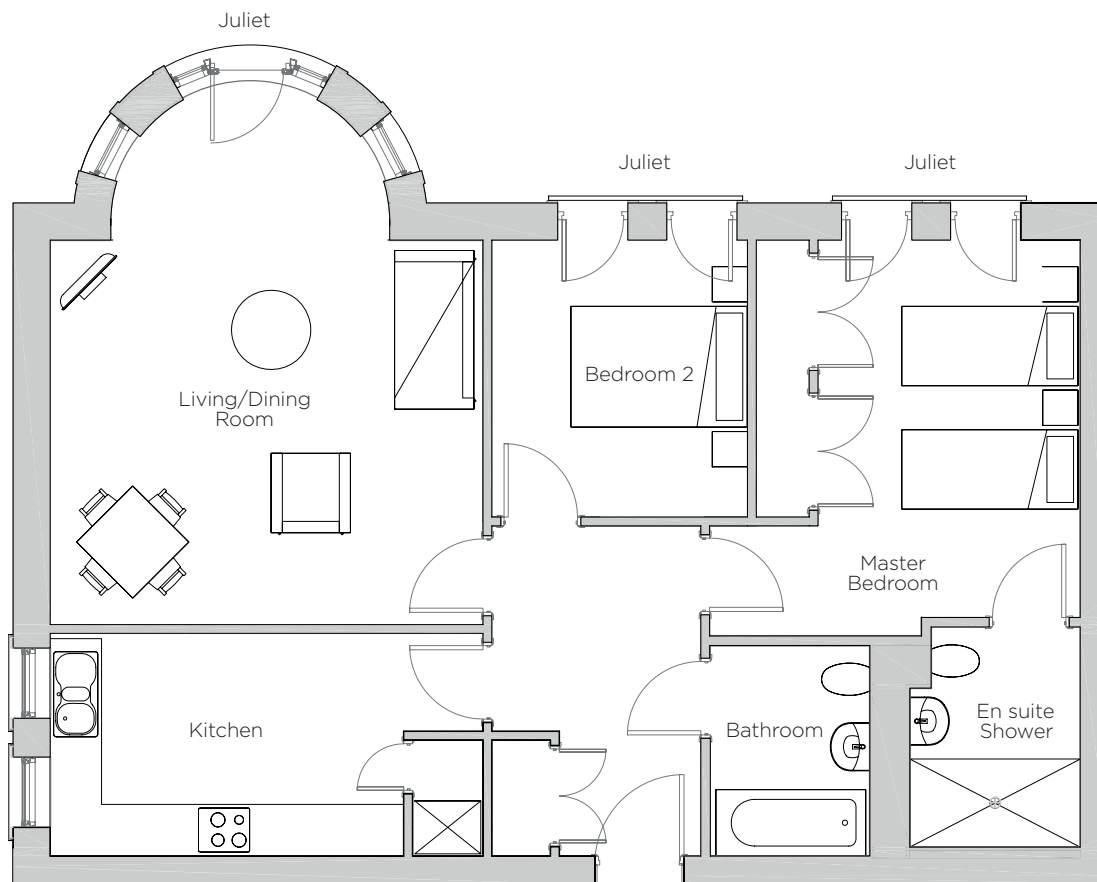
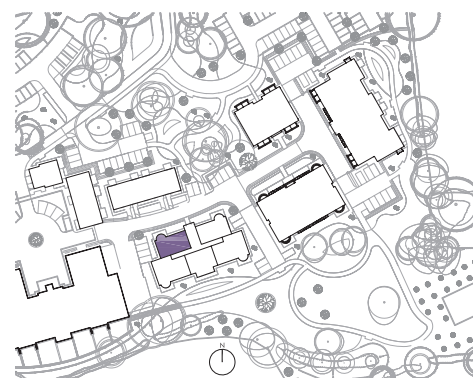


Audley Redwood

10 Smyth Court
 First Floor Apartment
 Plot 86



Internal Measurements	Metric (m)	Imperial (ft)
Living/Dining Room (ex. bay)	4.91 x 4.36	16'1" x 14'4"
Kitchen	4.91 x 2.53	16'1" x 8'3"
Master Bedroom	4.28 x 2.98	14'1" x 9'9"
Bedroom 2	3.14 x 2.90	10'4" x 9'6"



Audley Redwood
 Beggar Bush Lane, Failand, Bristol BS8 3TG
 01275 217 797
www.audleyvillages.co.uk

These floorplans are illustrative and for marketing purposes only. Maximum measurements are shown. Wardrobes not included in the overall room dimensions. Furniture shown to illustrate possible room layouts and not included in sale. Designs vary according to plot. All details should be checked at the Sales Office.
 14 March 2017



Audley Redwood

10 Smyth Court
First Floor Apartment
Plot 86



Two bedroom, first floor apartment

The stunning bay windows with a Juliet balcony in the living room help to make this apartment light and feel spacious. Both double bedrooms have Juliet balconies and the master also has an en suite.



Property specifications:

- Luxury fitted SieMatic kitchen
- Large living/dining room with bay window and Juliet balcony
- Master bedroom with fitted wardrobes, Juliet balcony and en suite
- Guest double bedroom with Juliet balcony
- Villeroy & Boch guest bathroom
- Positioned close to Redwood Hall and the Audley Club



Audley Redwood
Beggar Bush Lane, Failand, Bristol BS8 3TG
01275 217 797
www.audleyvillages.co.uk

