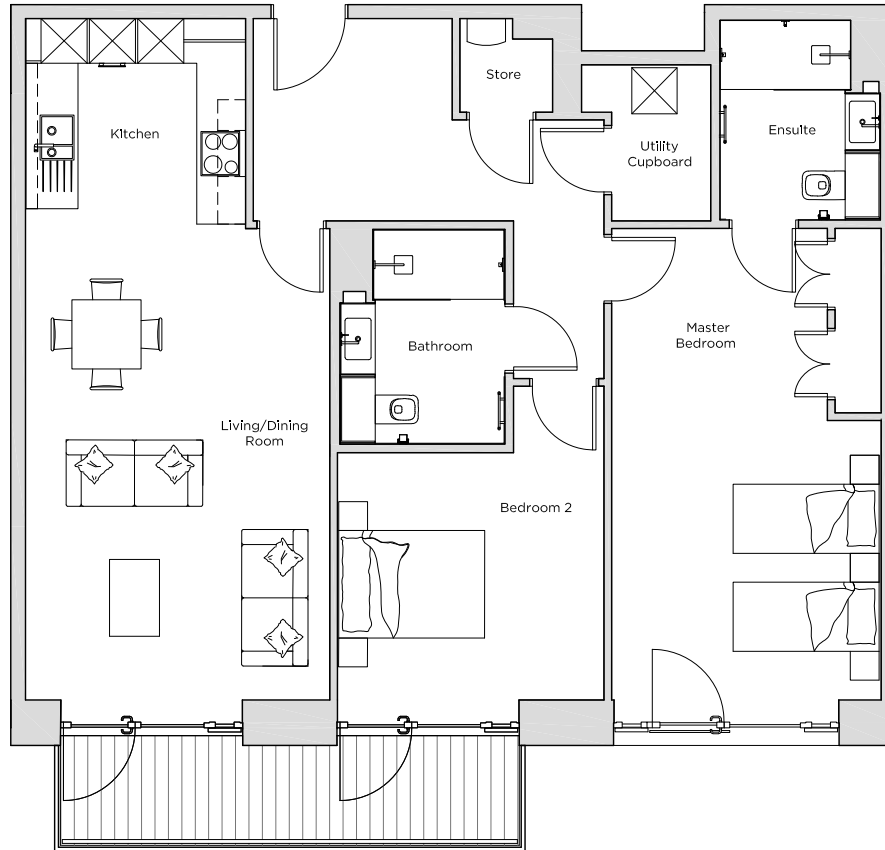
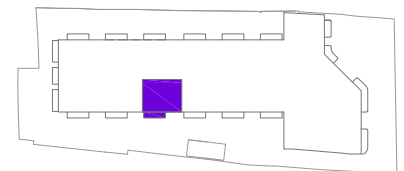


Audley Nightingale Place

Plot 22 , First Floor



Internal Measurements	Metric (m)	Imperial (ft)
Living/Dining Room	6.1 x 4.0	20' 0" x 13' 1"
Kitchen	2.7 x 2.9	8' 10" x 9' 6"
Master Bedroom	6.1 x 3.5	20' 0" x 11' 6"
Bedroom 2	3.2 x 3.5	10' 6" x 11' 6"
Balcony	1.2 x 6.0	3' 11" x 19' 8"



Audley Nightingale Place
3 Nightingale Lane,
London
SW4 9AF

020 3802 1580
www.audleyvillages.co.uk

Drawings are preliminary and may be subject to change pending detailed design. Furniture for illustration purposes only. Built-in wardrobes in bedrooms have not been included in the overall dimensions. Dimensions indicate main area of room only. These pages are intended for marketing purposes only. Designs vary according to plot and all details should be checked at the Sales Office.
April 2018

