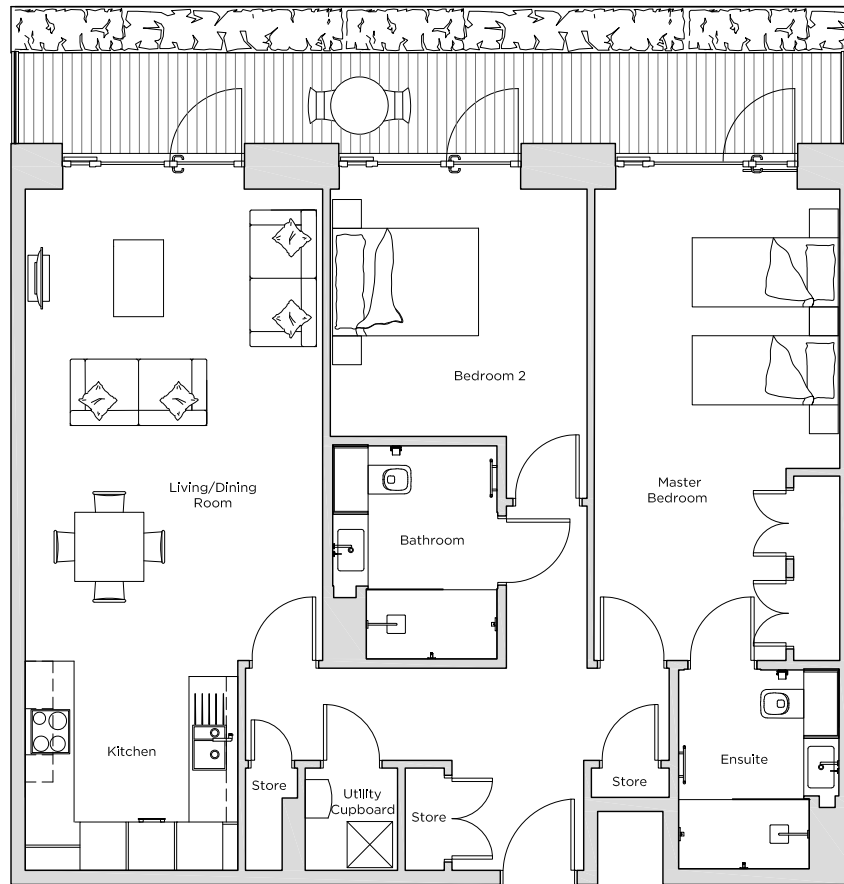


# Audley Nightingale Place

Plot 2, Ground Floor



## Internal Measurements

## Metric (m)

## Imperial (ft)

Living/Dining Room	6.1 x 3.9	20' 0" x 12' 10"
Kitchen	2.7 x 2.8	8' 10" x 9' 2"
Master Bedroom	6.1 x 3.2	20' 0" x 10' 6"
Bedroom 2	3.2 x 3.3	10' 6" x 10' 10"
Terrace	1.2 x 10.8	3' 11" x 35' 5"



Audley Nightingale Place  
3 Nightingale Lane,  
London  
SW4 9AF

020 3802 1580  
[www.audleyvillages.co.uk](http://www.audleyvillages.co.uk)

Drawings are preliminary and may be subject to change pending detailed design.  
Furniture for illustration purposes only. Built-in wardrobes in bedrooms have not been included in the overall dimensions. Dimensions indicate main area of room only. These pages are intended for marketing purposes only. Designs vary according to plot and all details should be checked at the Sales Office.  
April 2018

