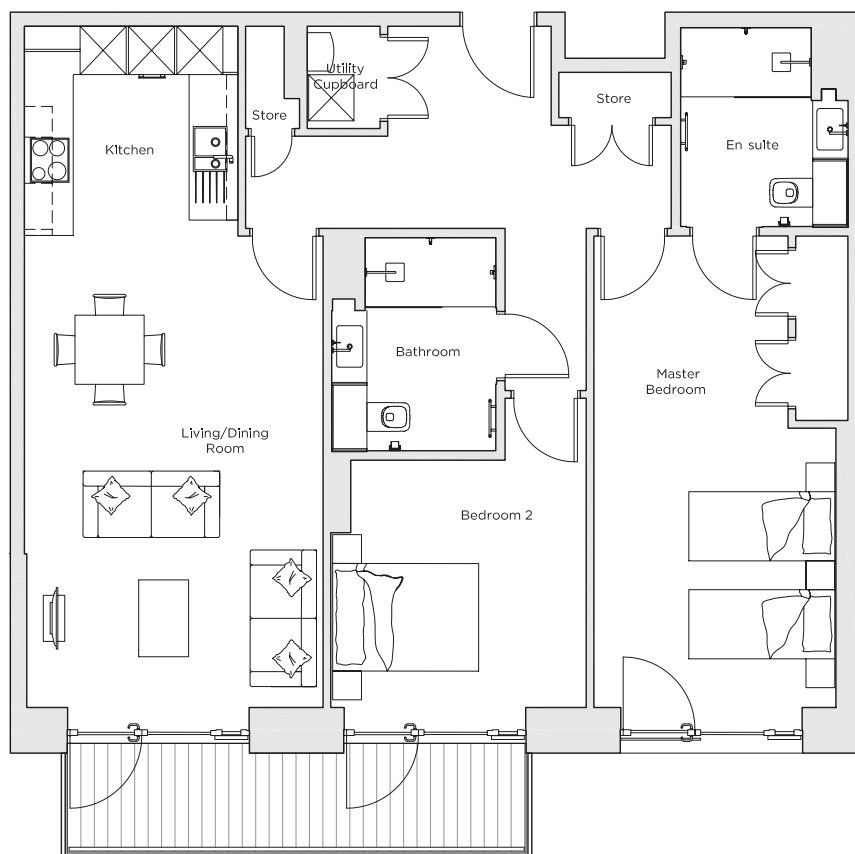
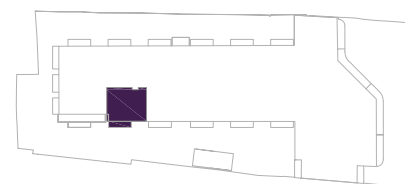


Audley Nightingale Place

Plot 38, Second Floor



Internal Measurements	Metric (m)	Imperial (ft)
Living/Dining Room	6.10 x 3.90	20'0" x 12'10"
Kitchen	2.70 x 2.80	8'10" x 9'2"
Master Bedroom	6.10 x 3.10	20'0" x 10'2"
Bedroom 2	3.20 x 3.30	10'6" x 10'10"
Balcony	1.20 x 6.00	3'11" x 19'8"



Audley Nightingale Place
3 Nightingale Lane,
London
SW4 9AH

020 3802 1580
www.audleyvillages.co.uk

Drawings are preliminary and may be subject to change pending detailed design.
Furniture for illustration purposes only. Built-in wardrobes in bedrooms have not been included in the overall dimensions. Dimensions indicate main area of room only. These pages are intended for marketing purposes only. Designs vary according to plot and all details should be checked at the Sales Office.
April 2018



Audley Nightingale Place

Second Floor Apartment
Plot 38

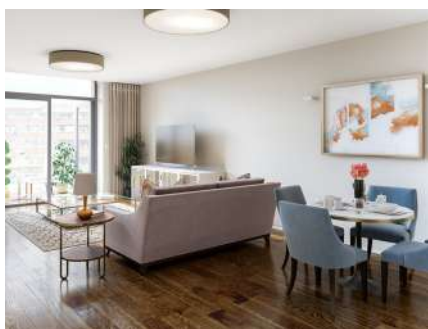


2 bedroom second floor apartment

Two bedroom, two bathroom apartment on the second floor. The master bedroom has a double fitted wardrobe and an en suite bathroom with a walk-in shower. The private balcony can be accessed from the open plan kitchen/living room and bedroom.

Property specifications:

- Large open plan kitchen/living/dining room
- Luxury SieMatic kitchen with integrated Miele appliances including dishwasher, fridge/freezer and oven
- Master bedroom with double fitted wardrobe and en suite with walk-in shower and Villeroy & Boch sanitaryware
- Second double bedroom
- Second Villeroy & Boch bathroom
- Private balcony



Audley Nightingale Place
3 Nightingale Lane, London SW4 9AH
020 3802 1580
www.audleyvillages.co.uk

