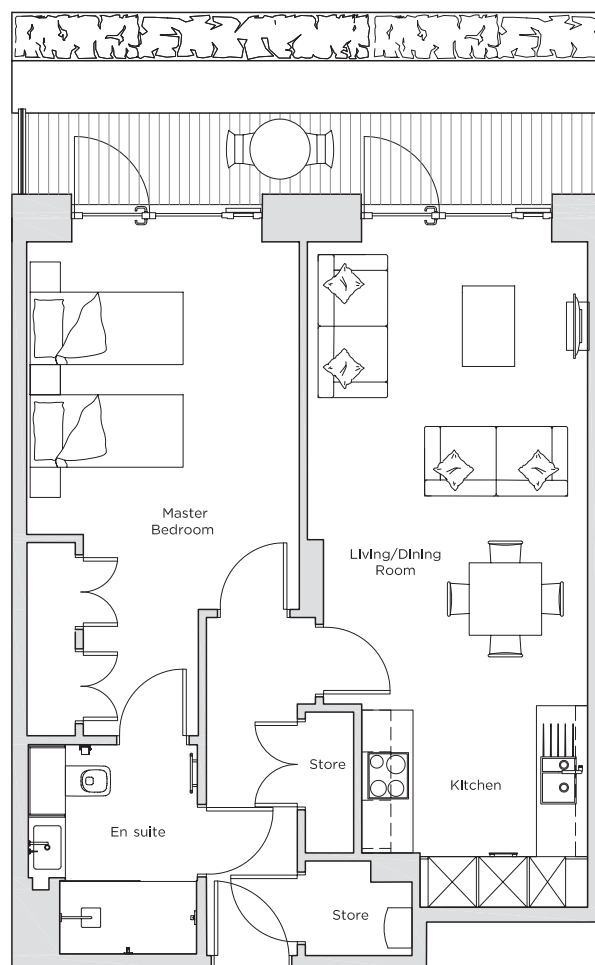
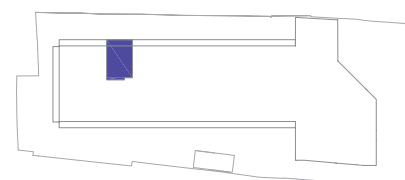


Audley Nightingale Place

Ground Floor
Apartment 5



Internal Measurements	Metric (m)	Imperial (ft)
Living/Dining Room	5.7 x 3.5	18'8" x 11'6"
Kitchen	2.5 x 2.8	8'2" x 9'2"
Master Bedroom	4.6 x 3.4	15'1" x 11'2"
Terrace	1.0 x 7.2	3'3" x 23'7"



Audley Nightingale Place
3 Nightingale Lane,
London
SW4 9AH

020 3802 1580
www.audleyvillages.co.uk

Drawings are preliminary and may be subject to change pending detailed design.
Furniture for illustration purposes only. Built-in wardrobes in bedrooms have not been included in the overall dimensions. Dimensions indicate main area of room only. These pages are intended for marketing purposes only. Designs vary according to plot and all details should be checked at the Sales Office.
April 2018



Audley Nightingale Place

Ground Floor
Apartment 5

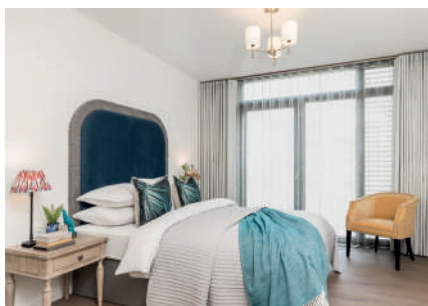


1 bedroom, ground floor apartment

A beautiful one bedroom, ground floor apartment, that benefits from an open plan living/dining room and large master bedroom that both lead onto an enclosed terrace. This apartment has plenty of storage throughout.

Property specifications:

- Large private terrace accessed from the open plan kitchen/living/dining room and master bedroom
- Luxury SieMatic kitchen with integrated Miele appliances including dishwasher, fridge/freezer and oven
- Master bedroom with double fitted wardrobe and en suite featuring walk-in shower and Villeroy & Boch sanitaryware
- Hallway storage



Audley Nightingale Place
3 Nightingale Lane, London SW4 9AH
020 3802 1580
www.audleyvillages.co.uk

