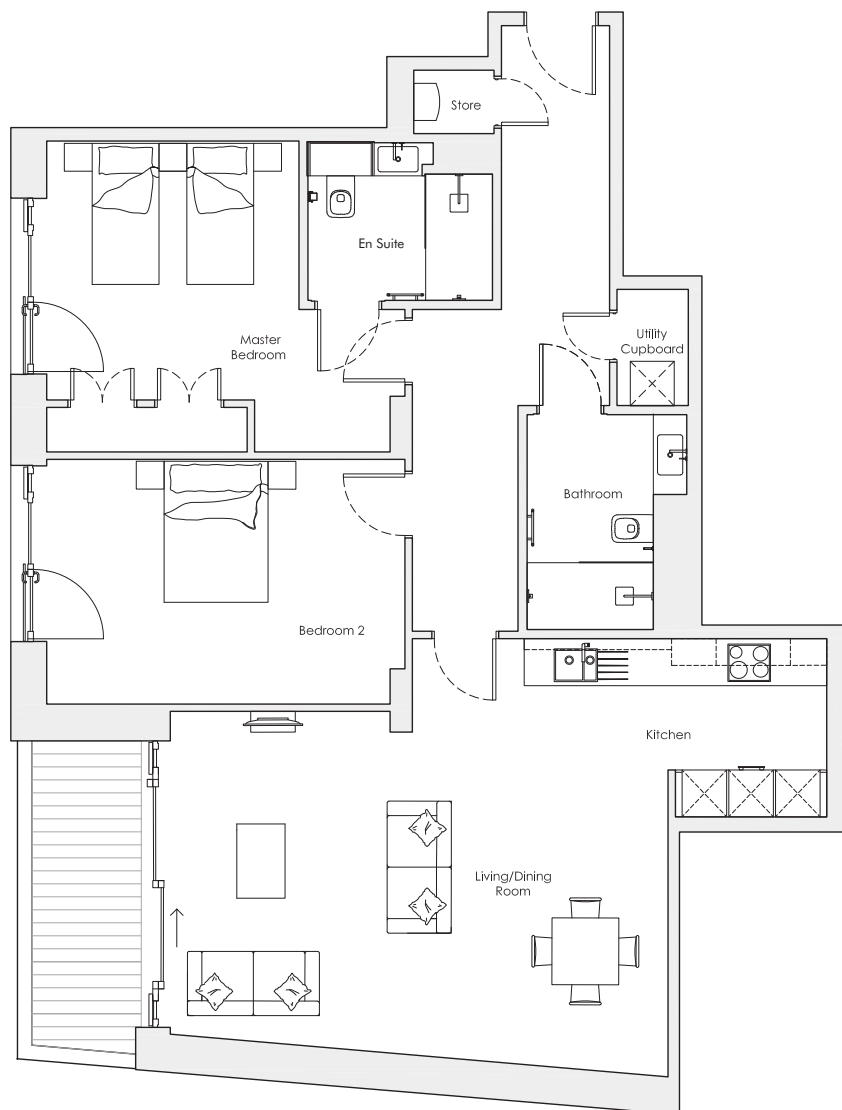
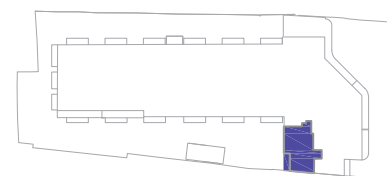


# Audley Nightingale Place

Fourth Floor  
Apartment 68



Internal Measurements	Metric (m)	Imperial (ft)
Living/Dining Room	4.4 x 6.7	14'4" x 22'0"
Kitchen	2.4 x 4.1	7'10" x 13'5"
Master Bedroom	3.5 x 3.4	11'6" x 11'2"
Bedroom 2	3.3 x 4.8	10'10" x 15'9"
Balcony	4.1 x 1.4	13'5" x 4'7"



Audley Nightingale Place  
3 Nightingale Lane, London SW4 9AH  
020 3802 1580  
www.audleyvillages.co.uk

Drawings are preliminary and may be subject to change pending detailed design. Furniture for illustration purposes only. Built-in wardrobes in bedrooms have not been included in the overall dimensions. Dimensions indicate main area of room only. These pages are intended for marketing purposes only. Designs vary according to plot and all details should be checked at the Sales Office.  
April 2018

021082



# Audley Nightingale Place

Fourth Floor  
Apartment 68



## 2 bedroom, fourth floor apartment

This two bedroom, well proportioned apartment is spacious throughout and features a gallery style SieMatic kitchen with integrated Miele appliances. The master bedroom benefits from a Juliet balcony, double fitted wardrobes and an en suite shower room. The windows and balconies throughout the property are all south-facing making this home beautifully bright.

Property specifications:

- South-facing windows and balconies
- Master bedroom with double fitted wardrobes and en suite with walk-in shower and Villeroy & Boch sanitaryware
- Open plan kitchen and living/dining room that leads to the private balcony
- Fully fitted SieMatic kitchen with Miele integrated appliances including dishwasher, fridge/freezer and oven
- Utility cupboard and storage cupboard in hallway
- Property accessible via lift



Audley Nightingale Place  
3 Nightingale Lane, London SW4 9AH  
020 3802 1580  
[www.audleyvillages.co.uk](http://www.audleyvillages.co.uk)

