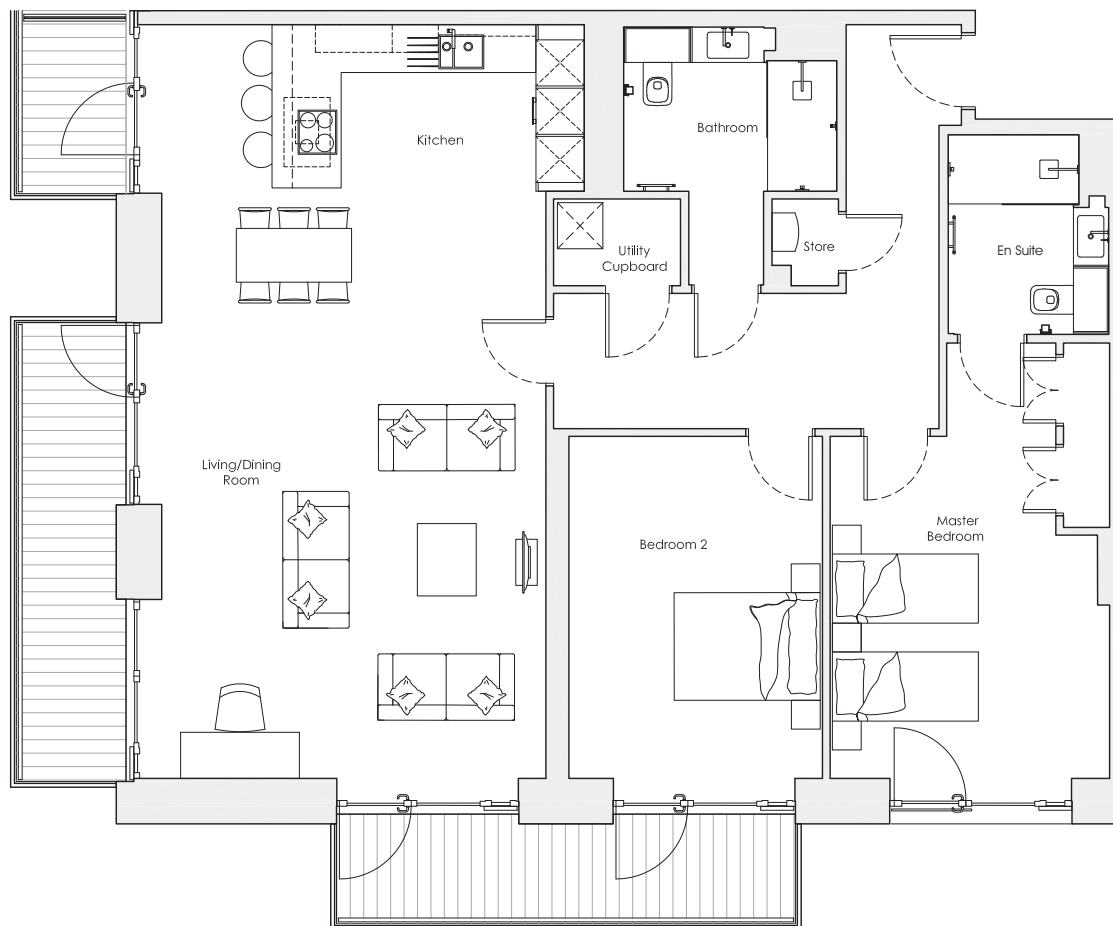
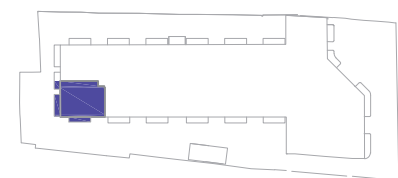


# Audley Nightingale Place

First Floor  
Apartment 24



Internal Measurements	Metric (m)	Imperial (ft)
Living/Dining Room	7.6 x 5.0	24'11" x 16'5"
Kitchen	2.2 x 5.8	7'3" x 19'0"
Master Bedroom	4.5 x 3.6	14'9" x 11'10"
Bedroom 2	4.5 x 3.3	14'9" x 10'10"
Balcony 1 + 2	8.3 x 1.2	27'3" x 3'11"
Balcony 3	1.2 x 6.0	3'11" x 19'8"



Audley Nightingale Place  
3 Nightingale Lane, London SW4 9AH  
020 3802 1580  
www.audleyvillages.co.uk

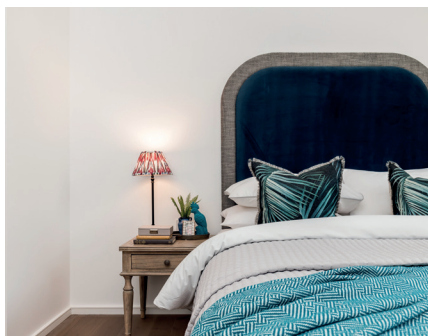
Drawings are preliminary and may be subject to change pending detailed design. Furniture for illustration purposes only. Built-in wardrobes in bedrooms have not been included in the overall dimensions. Dimensions indicate main area of room only. These pages are intended for marketing purposes only. Designs vary according to plot and all details should be checked at the Sales Office.  
April 2018

021082



# Audley Nightingale Place

First Floor  
Apartment 24



## 2 bedroom, first floor apartment

This luxury two bedroom, two bathroom home features a stunning open plan kitchen and generous living area. This property is dual-aspect with balconies facing south and east, making the rooms beautifully bright.

Property specifications:

- Large private balcony accessed from the open plan kitchen/living/dining room and bedroom
- Luxury SieMatic kitchen with integrated Miele appliances including dishwasher, fridge/freezer and oven
- Master bedroom with double fitted wardrobes and en suite with walk-in shower and Villeroy & Boch sanitaryware
- Second double bedroom
- Second Villeroy & Boch bathroom with walk-in shower
- Hallway storage and utility cupboard

Audley Nightingale Place  
3 Nightingale Lane, London SW4 9AH  
020 3802 1580  
[www.audleyvillages.co.uk](http://www.audleyvillages.co.uk)

