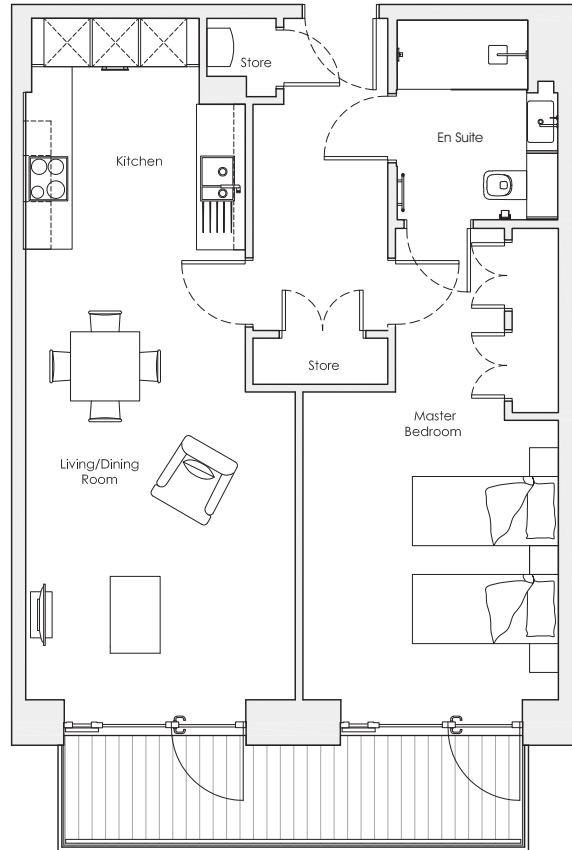
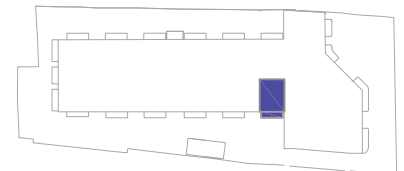


Audley Nightingale Place

Ground Floor
Apartment 19



| Internal Measurements | Metric (m) | Imperial (ft) |
|-----------------------|------------|----------------|
| Living/Dining Room | 5.8 x 3.5 | 19'0" x 11'6" |
| Kitchen | 3.1 x 2.9 | 10'2" x 9'6" |
| Master Bedroom | 4.0 x 3.3 | 13'1" x 10'10" |
| Balcony | 1.2 x 6.0 | 3'11" x 19'8" |



Audley Nightingale Place
3 Nightingale Lane, London SW4 9AH
020 3802 1580
www.audleyvillages.co.uk

Drawings are preliminary and may be subject to change pending detailed design. Furniture for illustration purposes only. Built-in wardrobes in bedrooms have not been included in the overall dimensions. Dimensions indicate main area of room only. These pages are intended for marketing purposes only. Designs vary according to plot and all details should be checked at the Sales Office.
April 2018

021082



Audley Nightingale Place

Ground Floor
Apartment 19



1 bedroom, ground floor apartment

A well-appointed one bedroom apartment that is conveniently located on the ground floor. The apartment offers a balcony that runs the width of the property and can be accessed via the living/dining room or the master bedroom. There is a modern kitchen that is fully fitted with integrated Miele appliances and a Jack & Jill style bathroom with Villeroy & Boch sanitaryware.

Property specifications:

- Jack & Jill style bathroom with Villeroy & Boch sanitaryware
- Master bedroom with double fitted wardrobes and en suite with walk-in shower and Villeroy & Boch sanitaryware
- Generous storage cupboards in hallway
- Fully fitted SieMatic kitchen with integrated Miele appliances including dishwasher, fridge/freezer and oven
- Ground floor apartment
- Private balcony accessed from the master bedroom or living/dining room

Audley Nightingale Place
3 Nightingale Lane, London SW4 9AH
020 3802 1580
www.audleyvillages.co.uk

