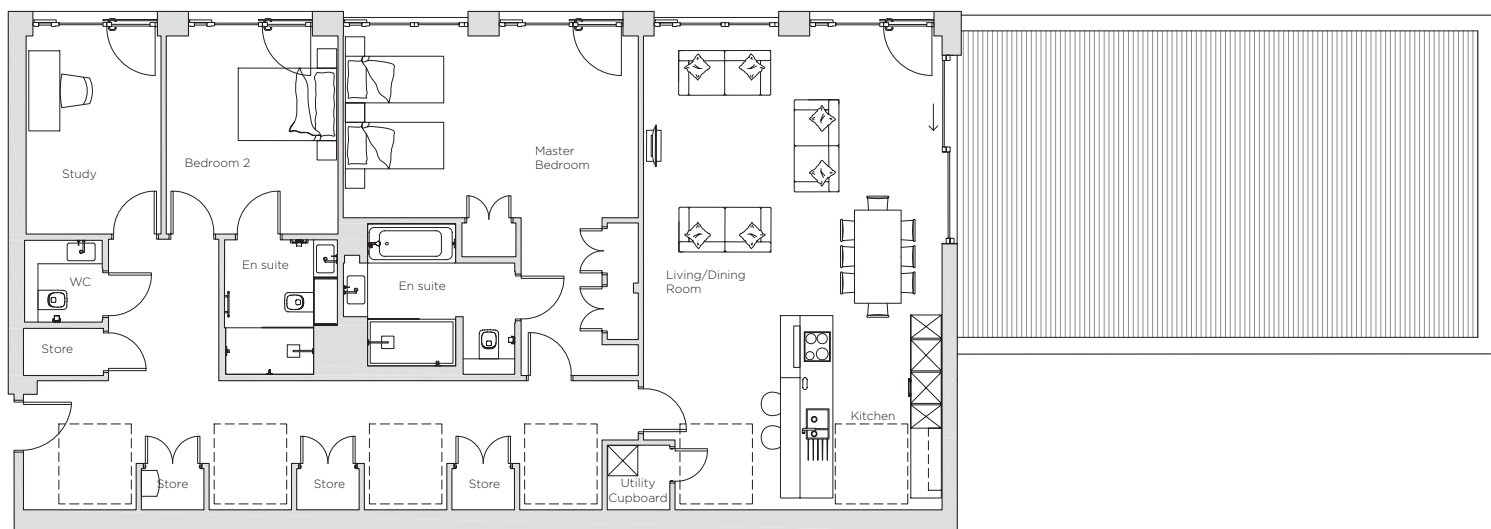
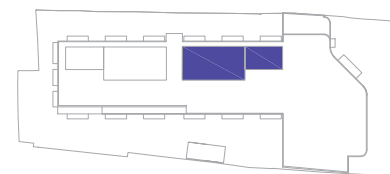


Audley Nightingale Place

Penthouse
Apartment 93



Internal Measurements	Metric (m)	Imperial (ft)
Living/Dining Room	5.4 x 5.8	17'9" x 19'0"
Kitchen	3.8 x 5.2	12'6" x 17'1"
Master Bedroom	3.5 x 5.7	11'6" x 18'8"
Bedroom 2	3.8 x 3.3	12'6" x 10'10"
Study	3.8 x 2.6	12'6" x 8'6"
Roof Terrace	5.9 x 10.0	19'4" x 32'10"



Audley Nightingale Place
3 Nightingale Lane,
London
SW4 9AH

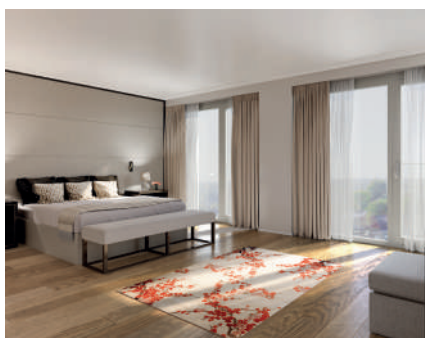
020 3802 1580
www.audleyvillages.co.uk

Drawings are preliminary and may be subject to change pending detailed design.
Furniture for illustration purposes only. Built-in wardrobes in bedrooms have not been included in the overall dimensions. Dimensions indicate main area of room only. These pages are intended for marketing purposes only. Designs vary according to plot and all details should be checked at the Sales Office.
April 2018



Audley Nightingale Place

Penthouse
Apartment 93



Penthouse

Stunning penthouse apartment with two bedrooms plus study and large rooftop terrace. The open plan living/dining room has an adjoining luxury SieMatic kitchen. Both bedrooms are spacious and include an en suite with Villeroy & Boch sanitaryware.

Property specifications:

- Penthouse apartment with views over Clapham Common and the city
- Private rooftop terrace accessed from the spacious kitchen/living/dining room
- Luxury SieMatic kitchen with integrated Miele appliances including dishwasher, fridge/freezer and oven
- Master bedroom with double fitted wardrobe and en suite featuring walk-in shower, bath and Villeroy & Boch sanitaryware
- Second double bedroom with en suite shower room
- Storage cupboards throughout apartment and separate utility cupboard
- Separate WC
- Study
- Lift access

Audley Nightingale Place
3 Nightingale Lane, London SW4 9AH
020 3802 1580
www.audleyvillages.co.uk

