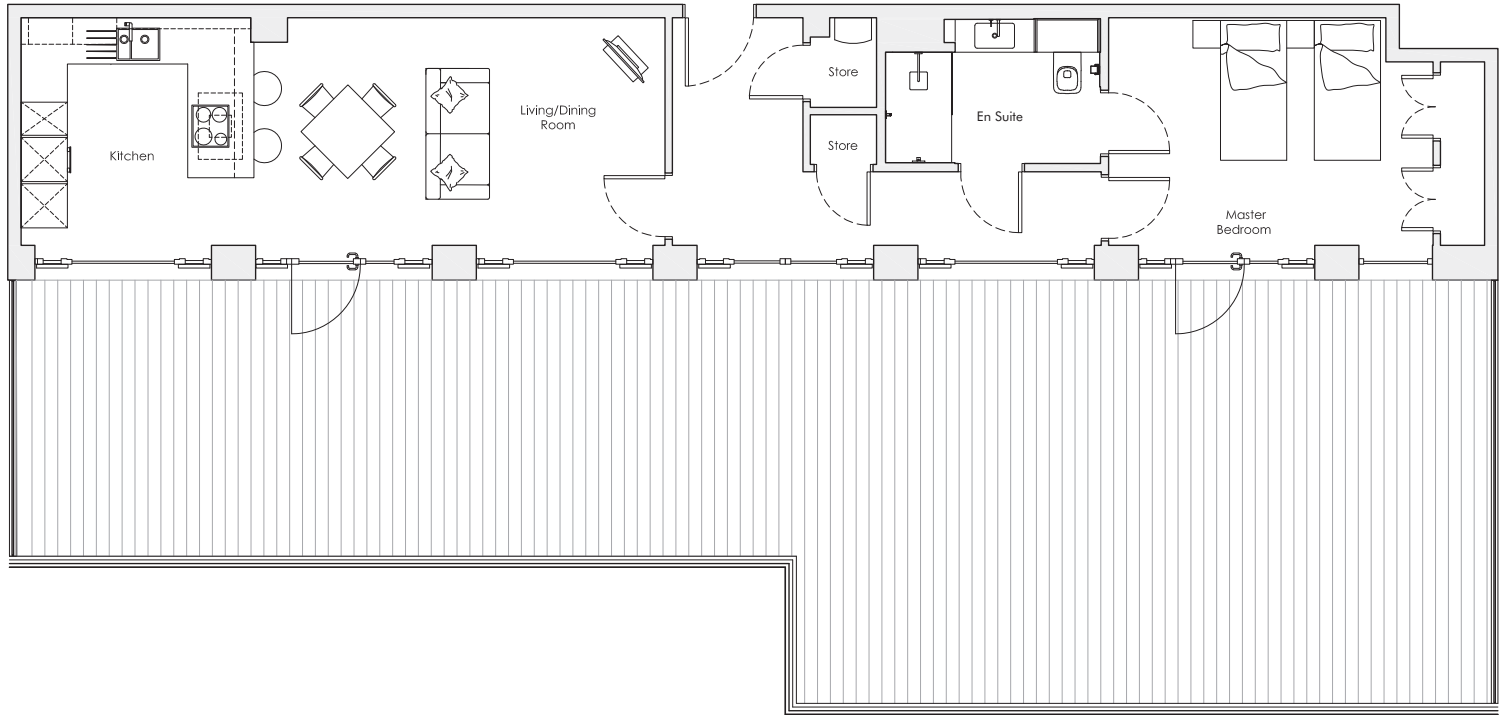
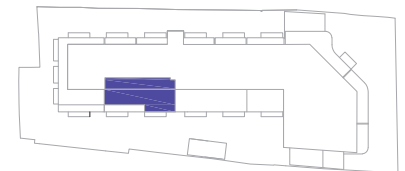


# Audley Nightingale Place

Apartment 89, Fifth Floor



Internal Measurements	Metric (m)	Imperial (ft)
Living/Dining Room	3.1 x 5.1	10'2" x 16'9"
Kitchen	3.1 x 3.1	10'2" x 10'2"
Master Bedroom	3.1 x 3.8	10'2" x 12'6"
Roof Terrace	5.8 x 20.1	19'0" x 65'11"



Audley Nightingale Place,  
3 Nightingale Place,  
London SW4 9AH  
020 3802 1580  
[www.audleyvillages.co.uk](http://www.audleyvillages.co.uk)

Drawings are preliminary and may be subject to change pending detailed design. Furniture for illustration purposes only. Built-in wardrobes in bedrooms have not been included in the overall dimensions. Dimensions indicate main area of room only. These pages are intended for marketing purposes only. Designs vary according to plot and all details should be checked at the Sales Office.  
April 2018

024071

