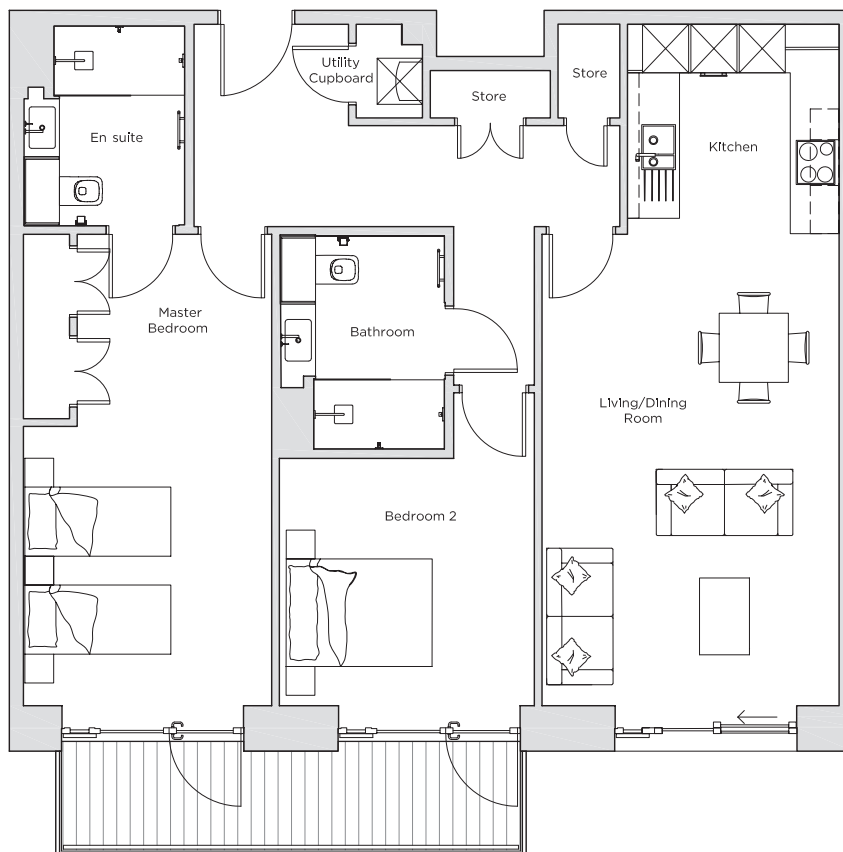
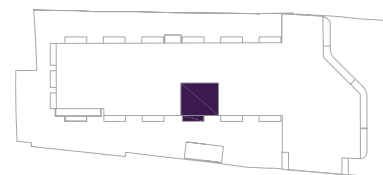


Audley Nightingale Place

Second Floor
Apartment 40



Internal Measurements	Metric (m)	Imperial (ft)
Living/Dining Room	6.10 x 3.90	20'0" x 12'10"
Kitchen	2.70 x 2.80	8'10" x 9'2"
Master Bedroom	6.10 x 3.20	20'0" x 10'6"
Bedroom 2	3.20 x 3.30	10'6" x 10'10"
Balcony	1.20 x 6.00	3'11" x 19'8"



Audley Nightingale Place
3 Nightingale Lane,
London
SW4 9AH

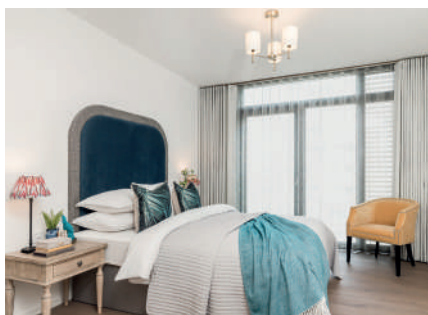
020 3802 1580
www.audleyvillages.co.uk

Drawings are preliminary and may be subject to change pending detailed design.
Furniture for illustration purposes only. Built-in wardrobes in bedrooms have not been included in the overall dimensions. Dimensions indicate main area of room only. These pages are intended for marketing purposes only. Designs vary according to plot and all details should be checked at the Sales Office.
April 2018



Audley Nightingale Place

Second Floor
Apartment 40



2 bedroom, second floor apartment

This superb two bedroom, two bathroom apartment benefits from a private balcony that's joined to both bedrooms. This apartment has a luxury finish including a designer SieMatic kitchen with integrated Miele appliances such as microwave and dishwasher, and beautiful bathrooms with walk-in showers.

Property specifications:

- Spacious open plan kitchen/living/dining room
- Designer kitchen with integrated appliances including dishwasher, fridge/freezer and oven
- Master bedroom with fitted wardrobe and en suite featuring walk-in shower and Villeroy & Boch sanitaryware
- Second double bedroom
- Second bathroom with walk-in shower and Villeroy & Boch sanitaryware
- Private balcony
- Lift access

Audley Nightingale Place
3 Nightingale Lane, London SW4 9AH
020 3802 1580
www.audleyvillages.co.uk

