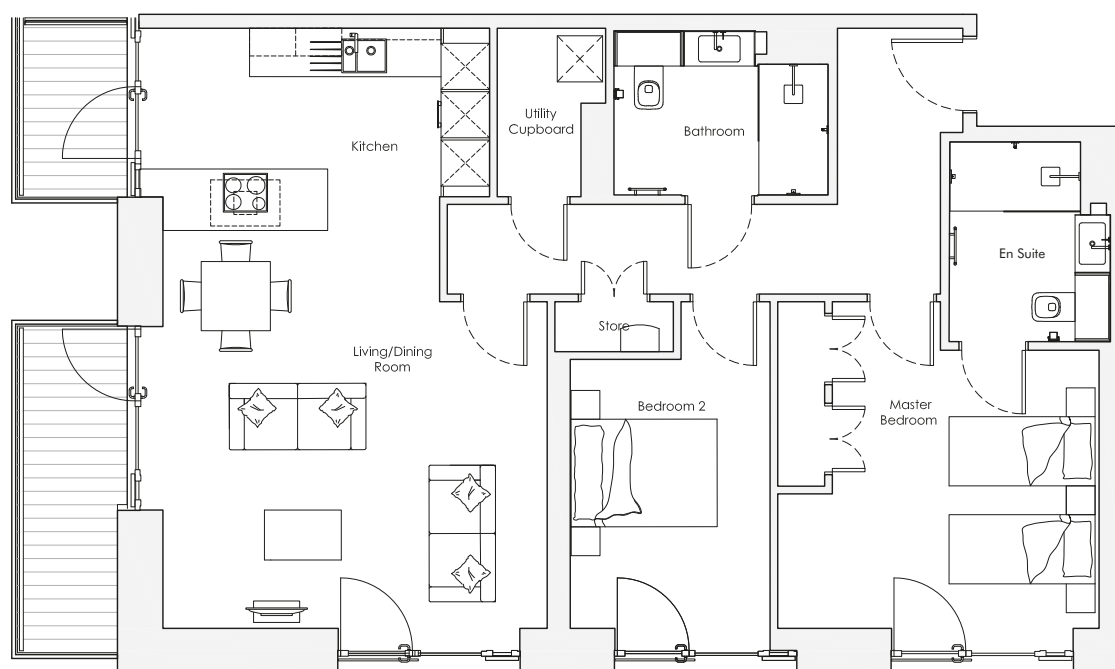
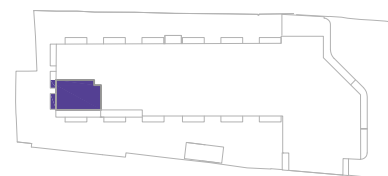


Audley Nightingale Place

Fourth Floor
Apartment 74



Internal Measurements	Metric (m)	Imperial (ft)
Living/Dining Room	4.3 x 5.0	14'1" x 16'5"
Kitchen	2.2 x 4.3	7'3" x 14'1"
Master Bedroom	3.6 x 4.2	11'10" x 13'9"
Bedroom 2	3.5 x 2.6	11'6" x 8'6"
Balcony 1	2.3 x 1.2	7'7" x 3'11"
Balcony 2	4.3 x 1.2	14'1" x 3'11"



Audley Nightingale Place
3 Nightingale Lane, London SW4 9AH
020 3802 1580
www.audleyvillages.co.uk

Drawings are preliminary and may be subject to change pending detailed design.
Furniture for illustration purposes only. Built-in wardrobes in bedrooms have not been included in the overall dimensions. Dimensions indicate main area of room only. These pages are intended for marketing purposes only. Designs vary according to plot and all details should be checked at the Sales Office.
April 2018

122062



Audley Nightingale Place

Fourth Floor
Apartment 74



2 bedroom, fourth floor apartment

Dual-aspect, two bedroom, two bathroom apartment with two south-facing balconies, one of which is accessible from the kitchen. The master bedroom has a double fitted wardrobe and an en suite bathroom with a walk-in shower.

Property specifications:

- Dual-aspect apartment with two south-facing balconies
- Master bedroom with double fitted wardrobe and en suite with walk-in shower, Villeroy & Boch sanitaryware and Juliet balcony
- Second bedroom with Juliet balcony
- Spacious open plan kitchen/living/dining room
- Beautiful SieMatic kitchen with integrated appliances
- Benefits from utility cupboard and hallway storage cupboard



Audley Nightingale Place
3 Nightingale Lane, London SW4 9AH
020 3802 1580
www.audleyvillages.co.uk

