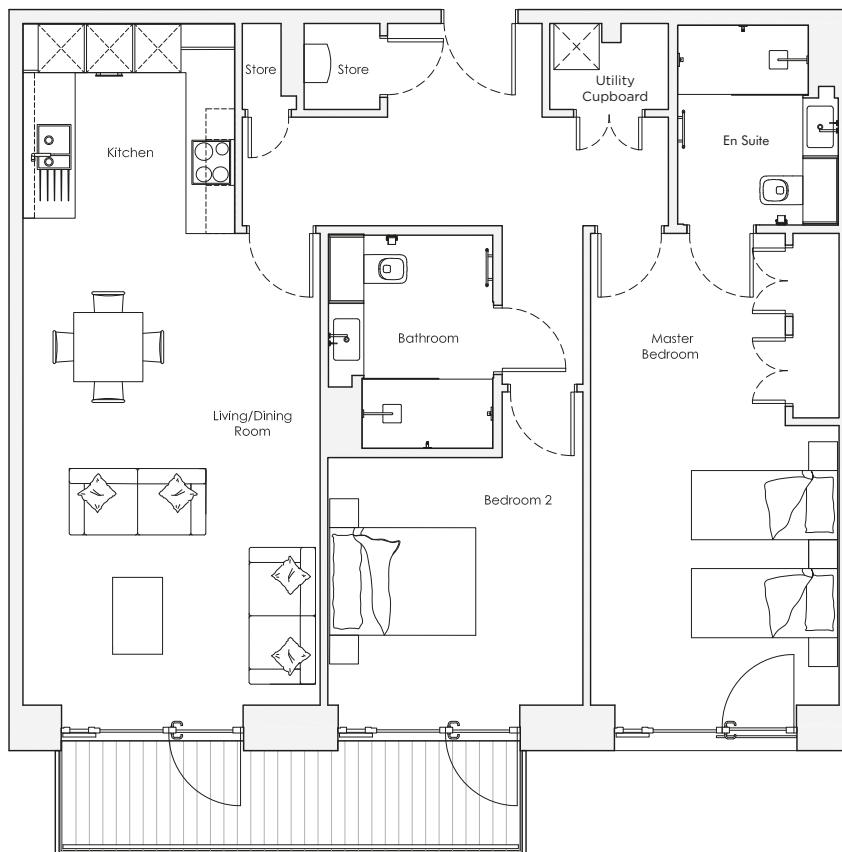
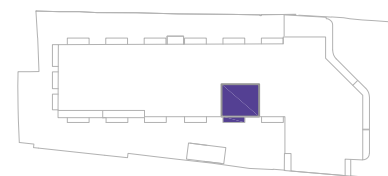


Audley Nightingale Place

Fourth Floor
Apartment 70



Internal Measurements	Metric (m)	Imperial (ft)
Living/Dining Room	6.1 x 3.9	20'0" x 12'10"
Kitchen	2.7 x 2.8	8'10" x 9'2"
Master Bedroom	6.1 x 3.2	20'0" x 10'6"
Bedroom 2	3.2 x 3.3	10'6" x 10'10"
Balcony	1.2 x 6.0	3'11" x 19'8"



Audley Nightingale Place
3 Nightingale Lane, London SW4 9AH
020 3802 1580
www.audleyvillages.co.uk

Drawings are preliminary and may be subject to change pending detailed design. Furniture for illustration purposes only. Built-in wardrobes in bedrooms have not been included in the overall dimensions. Dimensions indicate main area of room only. These pages are intended for marketing purposes only. Designs vary according to plot and all details should be checked at the Sales Office.
April 2018

Audley Nightingale Place

Fourth Floor
Apartment 70



2 bedroom, fourth floor apartment

This superb two bedroom apartment situated on the fourth floor has two generously sized bedrooms. The large master bedroom stretches the length of the apartment and is complemented by dual fitted wardrobes and an en suite shower room. The apartment offers an open plan kitchen and living/dining room area that creates a beautiful living space, which is further benefited by direct access to the apartment's balcony.

Property specifications:

- Balcony accessed from either the living room or guest bedroom
- Large master bedroom with double fitted wardrobes and en suite with walk-in shower and Villeroy & Boch sanitaryware
- Guest bathroom with Villeroy & Boch sanitaryware
- Second bedroom
- Hallway with storage and utility cupboards
- Luxurious SieMatic kitchen with integrated Miele appliances including dishwasher, fridge/freezer and oven



Audley Nightingale Place
3 Nightingale Lane, London SW4 9AH
020 3802 1580
www.audleyvillages.co.uk

