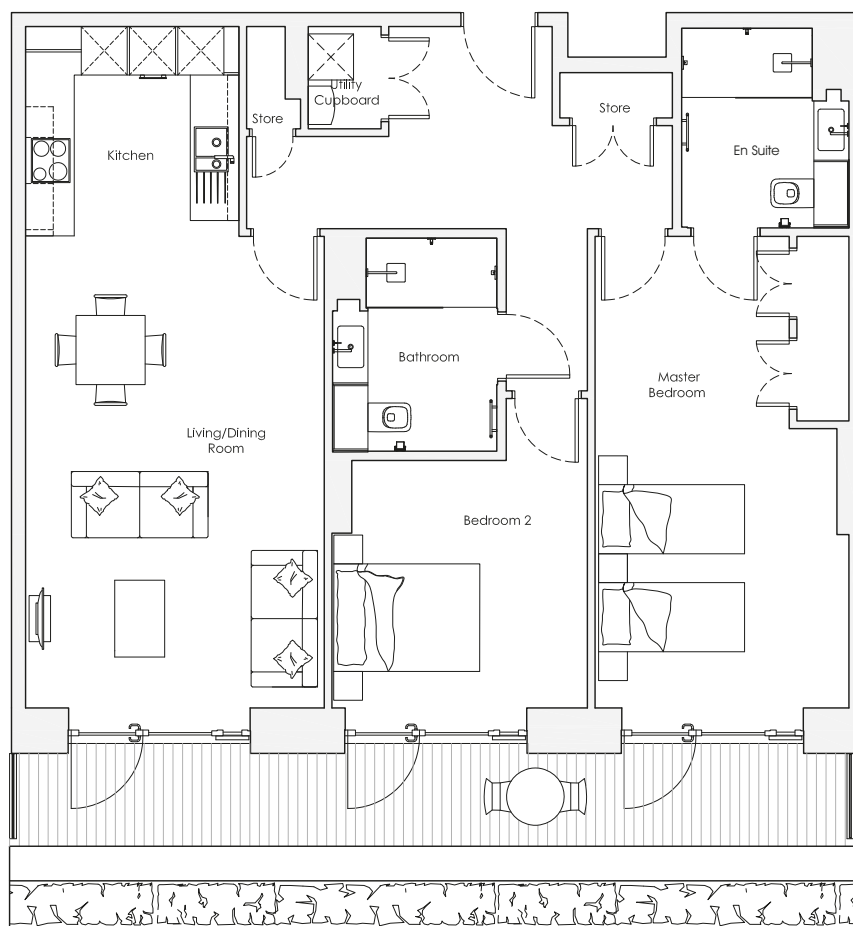
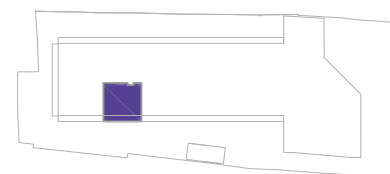


# Audley Nightingale Place

First Floor  
Apartment 6



Internal Measurements	Metric (m)	Imperial (ft)
Living/Dining Room	6.1 x 3.9	20'0" x 12'10"
Kitchen	2.7 x 2.8	8'10" x 9'2"
Master Bedroom	6.1 x 3.3	20'0" x 10'10"
Bedroom 2	3.2 x 3.3	10'6" x 10'10"
Terrace	1.2 x 10.9	3'11" x 35'9"



Audley Nightingale Place  
3 Nightingale Lane, London SW4 9AH  
020 3802 1580  
www.audleyvillages.co.uk

Drawings are preliminary and may be subject to change pending detailed design. Furniture for illustration purposes only. Built-in wardrobes in bedrooms have not been included in the overall dimensions. Dimensions indicate main area of room only. These pages are intended for marketing purposes only. Designs vary according to plot and all details should be checked at the Sales Office.  
April 2018

122062



# Audley Nightingale Place

Ground Floor  
Apartment 6



## 2 bedroom, Ground floor apartment

This spacious two bedroom apartment benefits from a south-west facing private terrace. This property has a luxury finish, including a designer Miele kitchen with integrated appliances and Villeroy & Boch bathrooms.

Property specifications:

- Large private terrace
- Luxury Miele kitchen with integrated appliances including dishwasher, fridge/freezer and oven
- Master bedroom with double fitted wardrobe and en suite with walk-in shower and Villeroy & Boch sanitaryware
- Second double bedroom
- Second Villeroy & Boch bathroom
- Hallway storage



Audley Nightingale Place  
3 Nightingale Lane, London SW4 9AH  
020 3802 1580  
[www.audleyvillages.co.uk](http://www.audleyvillages.co.uk)

