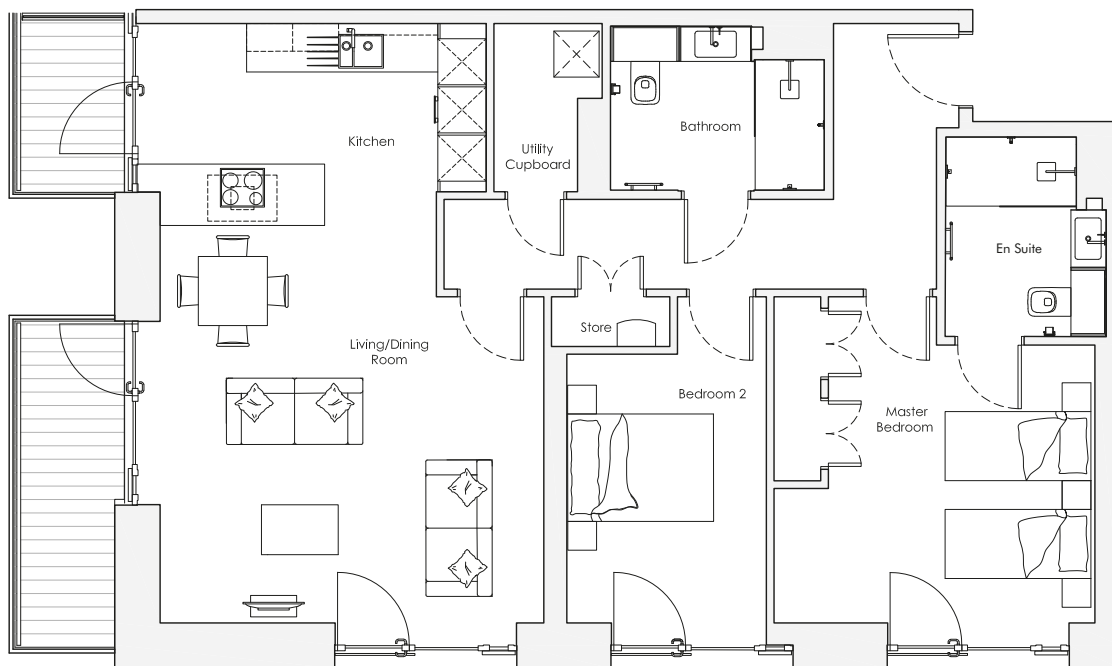
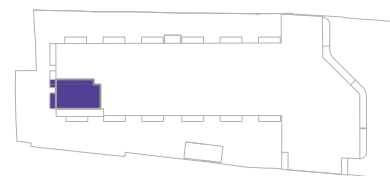


# Audley Nightingale Place

Third Floor  
Apartment 58



Internal Measurements	Metric (m)	Imperial (ft)
Living/Dining Room	4.3 x 5.0	14'1" x 16'5"
Kitchen	2.2 x 4.6	7'3" x 15'1"
Master Bedroom	3.6 x 4.2	11'10" x 13'9"
Bedroom 2	3.5 x 2.6	11'6" x 8'6"
Balcony 1	2.3 x 1.2	7'7" x 3'11"
Balcony 2	4.3 x 1.2	14'1" x 3'11"



Audley Nightingale Place  
3 Nightingale Lane, London SW4 9AH  
020 3802 1580  
www.audleyvillages.co.uk

Drawings are preliminary and may be subject to change pending detailed design. Furniture for illustration purposes only. Built-in wardrobes in bedrooms have not been included in the overall dimensions. Dimensions indicate main area of room only. These pages are intended for marketing purposes only. Designs vary according to plot and all details should be checked at the Sales Office.  
April 2018

122062



# Audley Nightingale Place

Third Floor  
Apartment 58



## 2 bedroom, third floor apartment

This spacious two bedroom apartment, situated on the third floor, offers a beautiful open plan kitchen and living/dining room area that is perfect for entertaining friends and family. The property boasts two separate south-facing balconies that can be accessed from either the kitchen or living room. There are two good-sized bedrooms and the master bedroom offers fitted wardrobes and an en suite shower room.

Property specifications:

- Two separate south-facing balconies
- Guest bedroom with Juliet balcony
- Hallway with large utility cupboard and storage facilities
- Master bedroom with double fitted wardrobes and en suite with walk-in shower and Villeroy & Boch sanitaryware
- Second bathroom with Villeroy & Boch sanitaryware
- Luxurious SieMatic kitchen with integrated Miele appliances including dishwasher, fridge/freezer and oven
- Property accessible via lift



Audley Nightingale Place  
3 Nightingale Lane, London SW4 9AH  
020 3802 1580  
[www.audleyvillages.co.uk](http://www.audleyvillages.co.uk)

