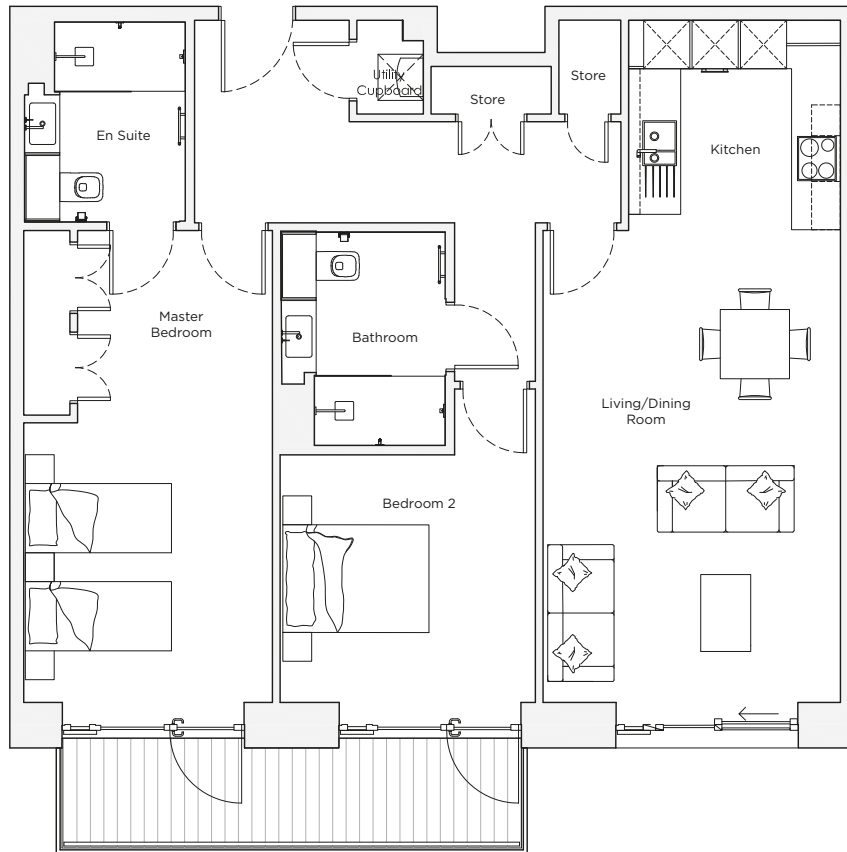
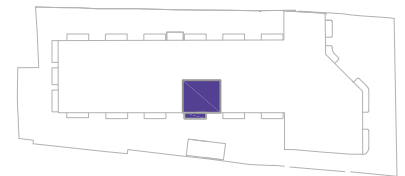


Audley Nightingale Place

First Floor
Apartment 21



Internal Measurements	Metric (m)	Imperial (ft)
Living/Dining Room	6.1 x 3.9	20'0" x 12'10"
Kitchen	2.7 x 2.8	8'10" x 9'2"
Master Bedroom	6.1 x 3.2	20'0" x 10'6"
Bedroom 2	3.2 x 3.3	10'6" x 10'10"
Balcony	1.2 x 6.0	3'11" x 19'8"



Audley Nightingale Place
3 Nightingale Lane, London SW4 9AH
020 3802 1580
www.audleyvillages.co.uk

Drawings are preliminary and may be subject to change pending detailed design. Furniture for illustration purposes only. Built-in wardrobes in bedrooms have not been included in the overall dimensions. Dimensions indicate main area of room only. These pages are intended for marketing purposes only. Designs vary according to plot and all details should be checked at the Sales Office.
April 2018

022051



Audley Nightingale Place

First Floor
Apartment 21



2 bedroom, first floor apartment

This superb two bedroom apartment, situated on the first floor, has a spacious theme throughout. The master bedroom is beautifully designed with built-in wardrobes and an en suite shower room with Villeroy & Boch sanitaryware. The apartment has a good-sized balcony, which can be accessed from either the master or guest-bedroom.

Property specifications:

- Spacious open plan living/dining/kitchen
- Luxury SieMatic kitchen with integrated Miele appliances including dishwasher, fridge/freezer and oven
- Spacious master bedroom with double fitted wardrobes and en suite with walk-in shower and Villeroy & Boch sanitaryware
- Ample sized guest bedroom with direct access to the balcony
- Second bathroom with Villeroy & Boch sanitaryware
- Storage facilities in hallway

Audley Nightingale Place
3 Nightingale Lane, London SW4 9AH
020 3802 1580
www.audleyvillages.co.uk

