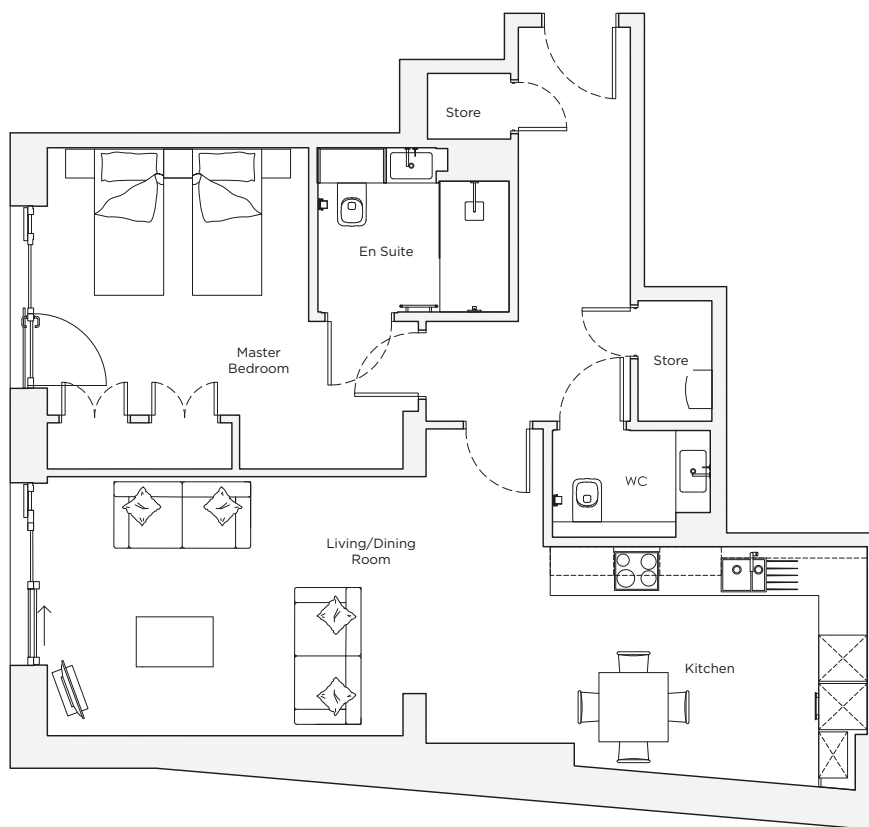
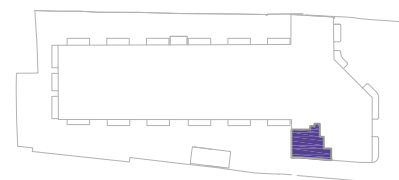


# Audley Nightingale Place

First Floor  
Apartment 18



Internal Measurements	Metric (m)	Imperial (ft)
Living/Dining Room	3.4 x 6.4	11'2" x 21'0"
Kitchen	3.2 x 4.2	10'6" x 13'9"
Master Bedroom	3.5 x 3.4	11'6" x 11'2"



Audley Nightingale Place  
3 Nightingale Lane, London SW4 9AH  
020 3802 1580  
[www.audleyvillages.co.uk](http://www.audleyvillages.co.uk)

Drawings are preliminary and may be subject to change pending detailed design. Furniture for illustration purposes only. Built-in wardrobes in bedrooms have not been included in the overall dimensions. Dimensions indicate main area of room only. These pages are intended for marketing purposes only. Designs vary according to plot and all details should be checked at the Sales Office.  
April 2018

022051



# Audley Nightingale Place

First Floor  
Apartment 18



## 1 bedroom, first floor apartment

A spacious one bedroom apartment, with a large open plan kitchen/dining and living area that's ideal for entertaining. The master bedroom features a Juliet balcony, double fitted wardrobes and an en suite shower room. This property benefits from natural light with south-facing windows.

Property specifications:

- Luxury SieMatic kitchen with integrated Miele appliances including dishwasher, fridge/freezer and oven
- Spacious open plan kitchen and living/dining room area
- Master bedroom with double fitted wardrobes and en suite with walk-in shower and Villeroy & Boch sanitaryware
- South facing property with Juliet balcony
- Generous storage facilities in hallway
- Property accessible via lift



Audley Nightingale Place  
3 Nightingale Lane, London SW4 9AH  
020 3802 1580  
[www.audleyvillages.co.uk](http://www.audleyvillages.co.uk)

