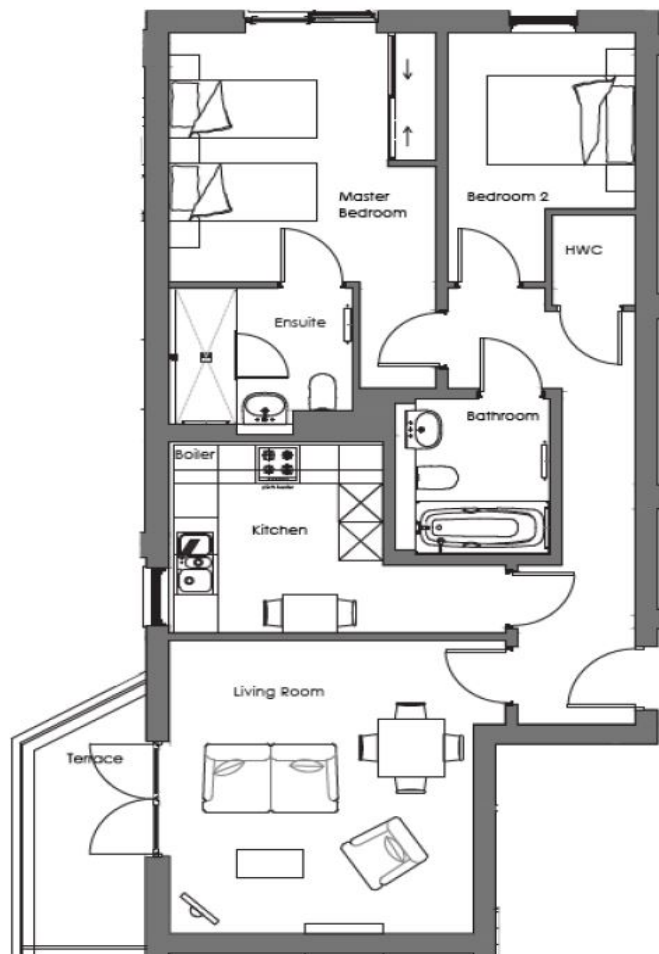
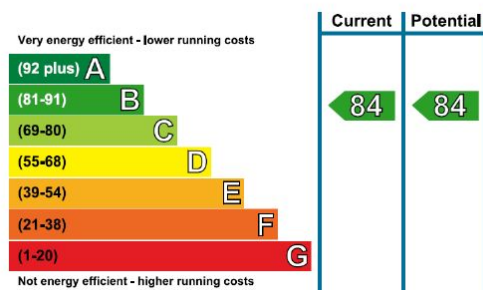


Audley Mote House

17 Alexander Court
2 Bedroom pre-owned ground floor apartment



Internal Measurements	Metric (m)	Imperial (ft)
Living/Dining Room	4.57 x 4.12	15'0" x 13'6"
Kitchen	2.97 x 2.89	9'9" x 9'6"
Master Bedroom	3.89 x 2.96	12'9" x 9'8"
Bedroom 2	3.89 x 2.55	12'9" x 8'4"
Bathroom	2.42 x 1.81	8'0" x 5'11"
En Suite	2.39 x 2.12	7'10" x 7'0"



Audley Mote House
Mote Park, Nr Bearsted, Kent, ME15 8NQ
01622 737 279 motesales@audleyvillages.co.uk
www.audleyvillages.co.uk

Built in wardrobes in bedrooms have not been included in the overall dimensions.
Maximum measurements shown. These pages are intended for marketing purposes only.
Designs vary according to plot and all details should be checked at the Sales office.
May 2019

Audley Mote House

17 Alexander Court
2 Bedroom pre-owned ground floor apartment



2 bedroom apartment



This two bedroom, two bathroom ground floor apartment with a raised terrace for outside seating and alfresco dining, is located in the regency style complex. The apartment boasts a well-appointed master bedroom with an en suite shower/wet room, fitted wardrobes and a Juliette balcony that overlooks the courtyard and has far reaching views of Mote House.



Property specifications

- Large living/dining room with French doors opening onto a raised terrace.
- Fully fitted luxury SieMatic kitchen
- Master bedroom with en suite shower/wet room area and fitted wardrobes
- Juliette balcony overlooking the courtyard
- Second bedroom and family bathroom
- Car parking available



Guide Price £385,000 (other fees apply)

Monthly management fee £760.55
Annual ground rent £500

Viewing by appointment with the sales office.

Audley Mote House
Mote Park, Nr Bearsted, Kent, ME15 8NQ
01622 737 279 motesales@audleyvillages.co.uk
www.audleyvillages.co.uk

Photos for illustration purposes only

