

16 Alexander Court



Two bedroom apartment

This two bedroom ground floor apartment is located in the regency style complex. The apartment boasts a well-appointed master bedroom with an en suite shower room and fitted wardrobes. The second bedroom has fitted wardrobes and desk. Both the master bedroom and the living/dining room enjoy direct access to two south west-facing terraces.

Property specifications

- French doors from living room and master bedroom open onto raised terraces
- Fully fitted luxury SieMatic kitchen
- Master bedroom with en-suite shower room
- Second bedroom and guest bathroom
- Car parking available
- Carpets and light fittings included

Guide Price £429,950 (other fees apply)

Monthly management fee £786.61

Annual ground rent £500

Bistro credit: £64

Council Tax Band: E

Viewing by appointment with the sales office.

01622 737 279

motesales@audleyvillages.co.uk

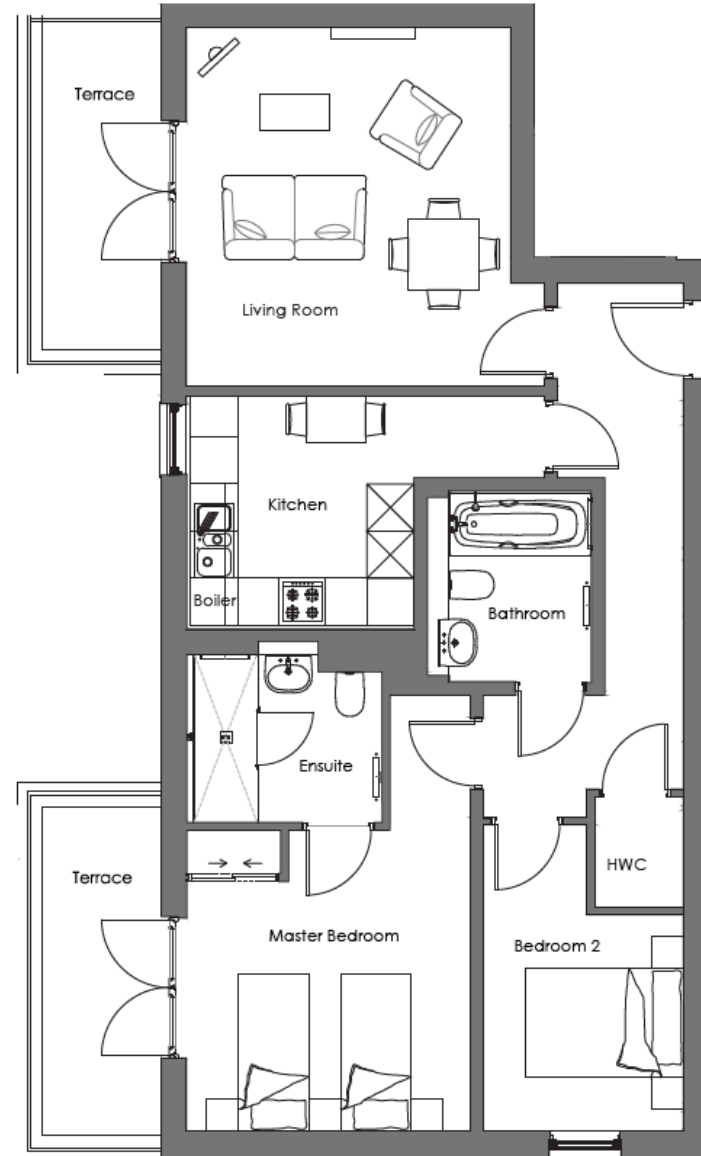


16 Alexander Court

Internal Measurements	Metric (m)	Imperial (ft)
Living/Dining Room	4.57m x 4.12m	15' x 13'6"
Kitchen	2.97m x 2.89m	9'9" x 9'6"
Master Bedroom	3.82m x 3.61m	12'7" x 11'10"
Bedroom 2	3.89m x 2.55m	12'9" x 8'4"
Bathroom	2.44m x 1.81m	8' x 5'11"
En Suite	2.49m x 2.14m	8'2" x 7'
Terrace (Master room)	4.17m x 1.51m	13'8" x 4'11"
Terrace (Living room)	4.16m x 1.51m	13'8" x 4'11"

Total 883sq ft

Built in wardrobes in bedrooms have not been included in the overall dimensions. Maximum measurements shown.



Score	Energy rating	Current	Potential
92+	A		
81-91	B	83 B	83 B
69-80	C		
55-68	D		
39-54	E		
21-38	F		
1-20	G		

These pages are intended for marketing purposes only. Designs vary according to plot and all details should be checked at the Sales office. September 2021

