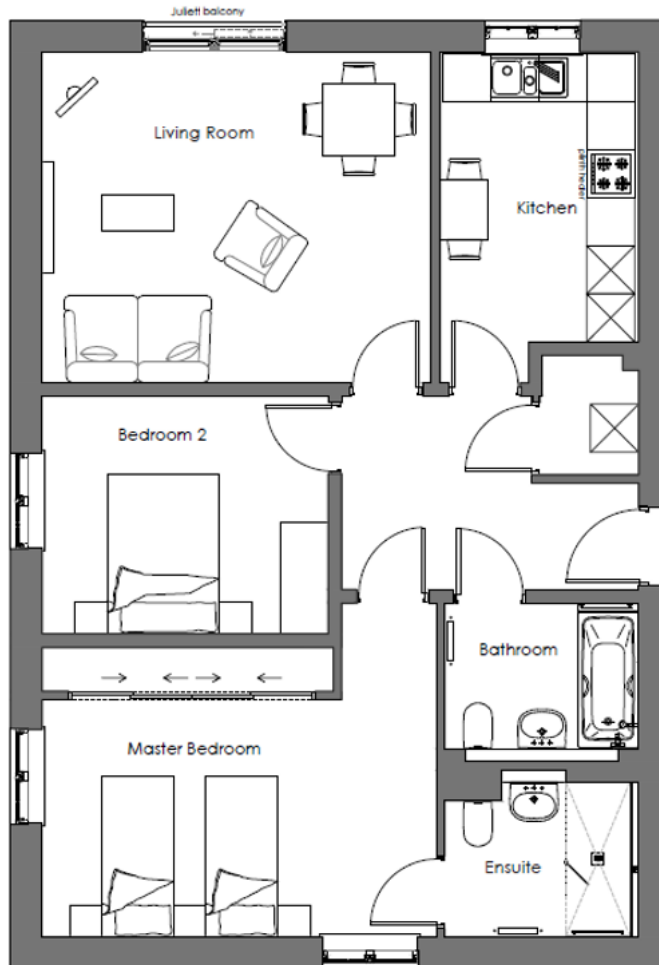
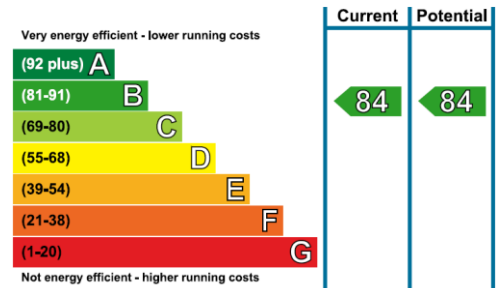


Audley Mote House

7 Woodville Court
Two bedroom pre-owned first floor apartment



Internal Measurements	Metric (m)	Imperial (ft)
Living Room	4.84 x 4.13	15'11" x 13'7"
Kitchen	3.62 x 2.48	11'11" x 8'1"
Master Bedroom	4.92 x 2.96	16'2" x 9'9"
Bedroom 2	3.57 x 2.97	11'8" x 9'9"
Bathroom	2.42 x 1.81	7'11" x 5'11"
En Suite	2.42 x 1.93	7'11" x 6'4"
Total Sq.Ft 883		



Audley Mote House
Mote Park, Nr Bearsted, Kent, ME15 8NQ
01622 737 279 motesales@audleyvillages.co.uk
www.audleyvillages.co.uk

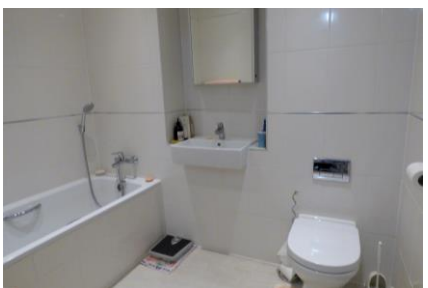
Built in wardrobes in bedrooms have not been included in the overall dimensions.
Maximum measurements shown. These pages are intended for marketing purposes only.
Designs vary according to plot and all details should be checked at the Sales office.
May 2019



Audley Mote House

7 Woodville Court

Two bedroom pre-owned first floor apartment



Two bedroom apartment

This delightful two bedroom apartment is located on the first floor of Woodville Court and enjoys a pleasant outlook across the village grounds. The property benefits from a spacious living room with a Juliet balcony and a SieMatic kitchen with modern integrated appliances. There are two good sized bedrooms, including the master which is well-appointed and is enhanced by fitted wardrobes and an en suite shower room.

Property specifications

- Spacious living room with a Juliet balcony
- Separate SieMatic kitchen with integrated appliances
- Master bedroom with an en suite shower room
- Guest bedroom
- Luxurious Villeroy & Boch sanitaryware
- Gas central heating and double glazed windows
- Lift access

Guide Price £370,000 (other fees apply)

Monthly management fee £786.61
Annual ground rent £500

Viewing by appointment with the sales office.

Audley Mote House
Mote Park, Nr Bearsted, Kent, ME15 8NQ
01622 737 279 motesales@audleyvillages.co.uk
www.audleyvillages.co.uk