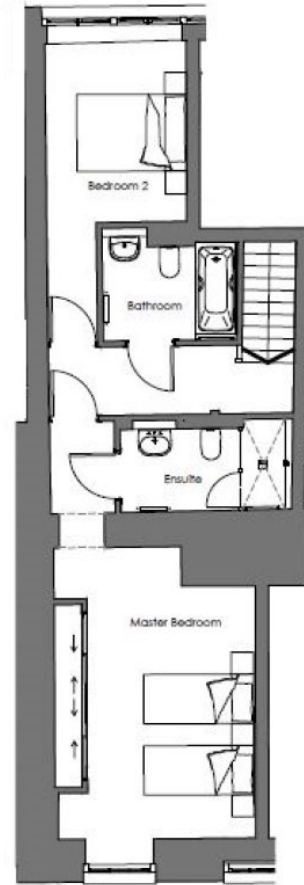
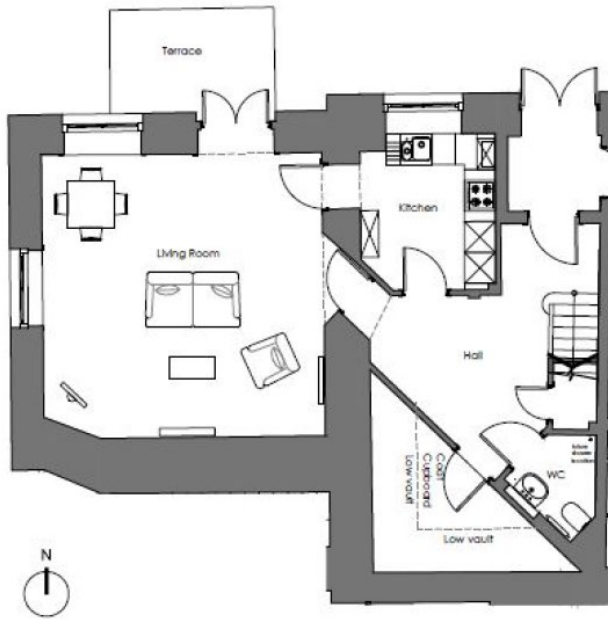
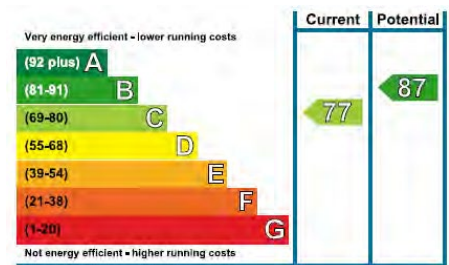


# Audley Mote House

2 The Brewhouse  
2 Bedroom pre-owned period cottage



Internal Measurements	Metric (m)	Imperial (ft)
Living/Dining Room	5.48 x 5.33	18'0" x 17'10"
Kitchen	3.03 x 2.61	9'11" x 8'7"
Master Bedroom	5.33 x 3.06	17'6" x 10'1"
Bedroom 2	3.29 x 2.57	10'10" x 8'5"
Bathroom	2.45 x 1.91	8'1" x 6'3"
W.C	1.85 x 1.78	6'1" x 5'10"
En Suite	3.03 x 1.53	9'11" x 5'0"

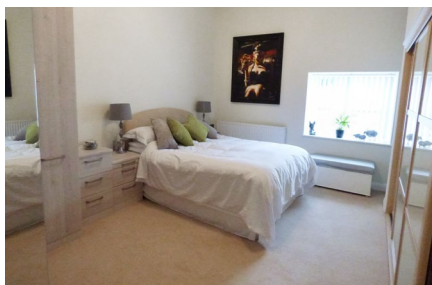


Audley Mote House  
Mote Park, Nr Bearsted, Kent, ME15 8NQ  
01622 737 279 [motesales@audleyvillages.co.uk](mailto:motesales@audleyvillages.co.uk)  
[www.audleyvillages.co.uk](http://www.audleyvillages.co.uk)

Built in wardrobes in bedrooms have not been included in the overall dimensions.  
Maximum measurements shown. These pages are intended for marketing purposes only.  
Designs vary according to plot and all details should be checked at the Sales office.  
April 2019

# Audley Mote House

2 The Brewhouse  
2 Bedroom pre-owned period cottage



## 2 bedroom period cottage

This charming two bedroom, two bathroom period cottage is located in a grade II listed building, The Old Brewhouse. The property has a spacious living room that leads directly onto a private terrace, that is perfect for entertaining. There is a modern fully fitted SieMatic kitchen with integrated appliances and a downstairs cloakroom. The master bedroom is large and benefits from an en suite shower room and fitted wardrobes.

### Property specifications

- Fully fitted SieMatic kitchen with Corian worktops and integrated appliances
- Large/living dining room complete with period features including exposed ceiling beams
- Downstairs cloakroom
- Master bedroom with fitted wardrobes and en suite
- Guest bedroom and family bathroom
- Car parking available

**Guide Price £499,950** (other fees apply)

Monthly management fee £760.54  
Annual ground rent £500

Viewing by appointment with the sales office.

Photos for illustration purposes only

Audley Mote House  
Mote Park, Nr Bearsted, Kent, ME15 8NQ  
01622 737 279 [motesales@audleyvillages.co.uk](mailto:motesales@audleyvillages.co.uk)  
[www.audleyvillages.co.uk](http://www.audleyvillages.co.uk)

