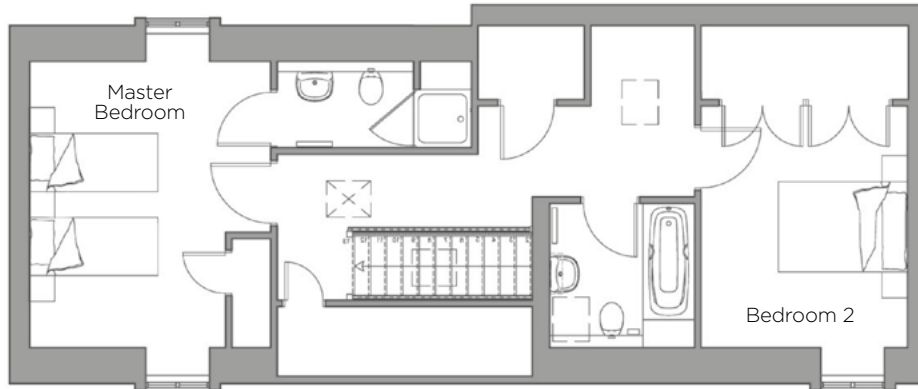
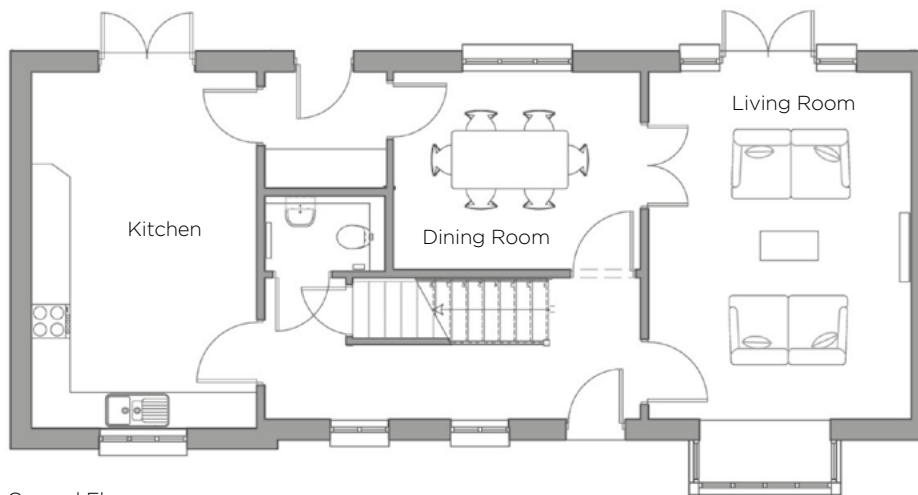


Audley Mote House

18 Garden Walk
Pre-owned Two Bedroom Cottage

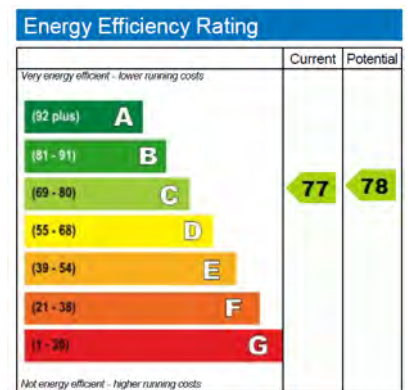


First Floor



Ground Floor

Internal Measurements	Metric (m)	Imperial (ft)
Living Room	5.38m x 4.06m	17'8" x 13'4"
Kitchen	5.51m x 3.48m	18'1" x 11'5"
Master Bedroom	3.73m x 4.42m	12'3" x 14'6"
Bedroom 2	3.73m x 3.20m	12'3" x 14'6"
Dining Room	3.84m x 3.05m	12'7" x 10'0"



Audley Mote House
Mote Park, Nr Bearsted, Kent ME15 8NQ
01622 737 279 motesales@audleyvillages.co.uk
www.audleyvillages.co.uk

Built-in wardrobes in bedrooms and Ensuite Bathrooms where applicable have not been included in the overall dimensions. Maximum measurements shown. Doorway and window alcoves where applicable have not been included in the dimensions. These pages are intended for marketing purposes only. Designs vary according to plot and all details should be checked at the Sales Office. Plans subject to planning and building regulations approval.
January 2017



Audley Mote House

18 Garden Walk
Pre-owned Two Bedroom Cottage



Two Bedroom Cottage

Located in the Walled Garden area of Audley Mote, this delightful dual aspect property offers a sunny living room with separate dining room.

The fully fitted kitchen/breakfast double aspect room offers views over the beautiful maintained Walled Garden, and has a sun terrace. There is a separate boot room and downstairs cloakroom next to the under-stairs cupboard. Upstairs the two double bedrooms have fitted cupboards and the master bedroom offers an en suite.

Price in the region of £525,000 (other fees apply)

Viewings by appointments with the sales office.

Audley Mote House
Mote Park, Nr Bearsted, Kent ME15 8NQ
01622 737 279 motesales@audleyvillages.co.uk
www.audleyvillages.co.uk

