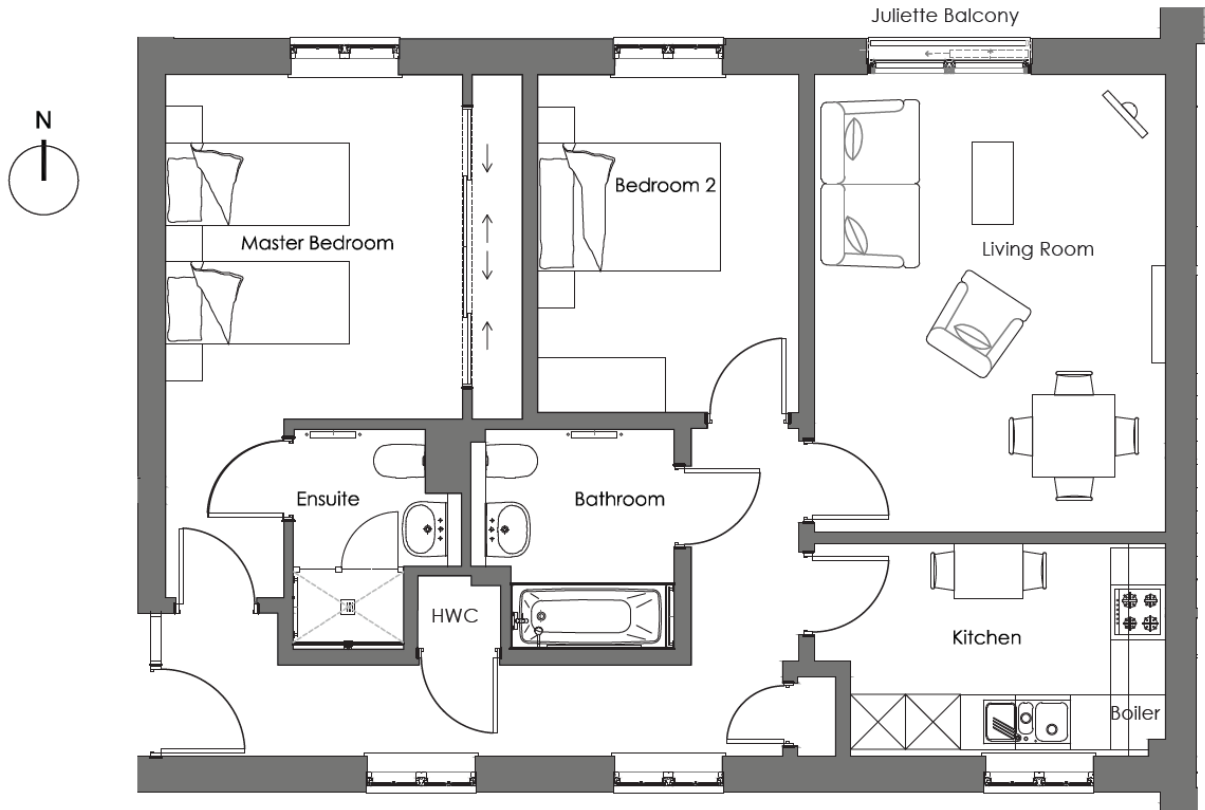
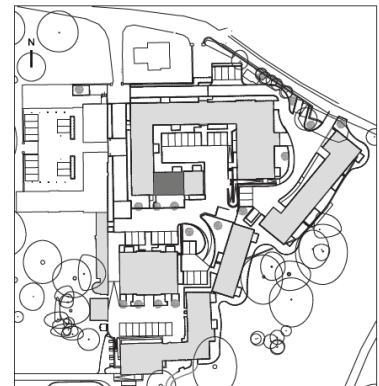


Audley Mote House

4 Alexander Court
Two bedroom pre-owned first floor apartment



Internal Measurements	Metric (m)	Imperial (ft)
Living Room	4.99 x 3.84	16'5" x 12'7"
Kitchen	3.85 x 2.33	12'7" x 7'8"
Master Bedroom	3.76 x 3.25	12'4" x 10'8"
En suite shower room	2.33 x 1.68	7'8" x 5'6"
Bedroom 2	3.69 x 2.85	12'1" x 9'4"
Bathroom	2.40 x 2.06	7'10" x 6'9"
Total Sq.Ft 879		



Score	Energy rating	Current	Potential
92+	A		
81-91	B	84 B	84 B
69-80	C		
55-68	D		
39-54	E		
21-38	F		
1-20	G		

Audley Mote House
Mote Park, Nr Bearsted, Kent, ME15 8NQ
01622 737 279 motesales@audleyvillages.co.uk
www.audleyvillages.co.uk

Built in wardrobes in bedrooms have not been included in the overall dimensions.
Maximum measurements shown. These pages are intended for marketing purposes only.
Designs vary according to plot and all details should be checked at the Sales office. April 2021.

Audley Mote House

4 Alexander Court
Two bedroom pre-owned first floor apartment



Two bedroom apartment

This two bedroom dual aspect apartment located on the first floor of Alexander Court has a spacious living room with a Juliet balcony.

The property has two good-sized bedrooms, with wall-to-wall fitted wardrobes and an en suite shower room in the master. There is a SieMatic kitchen with integrated appliances.

Property specifications

- First floor courtyard apartment close to car parking
- Modern south-facing SieMatic kitchen with integrated appliances
- Spacious living room with a Juliet balcony
- Master bedroom with an en suite shower room and luxurious Villeroy & Boch sanitaryware
- Separate guest bathroom
- Bright hallway with two south facing windows.
- Light fittings included



Guide Price £379,950 (other fees apply)

Monthly management fee £786.61
Annual ground rent £500

Viewing by appointment with the sales office.



Audley Mote House
Mote Park, Nr Bearsted, Kent, ME15 8NQ
01622 737 279 motesales@audleyvillages.co.uk
www.audleyvillages.co.uk

