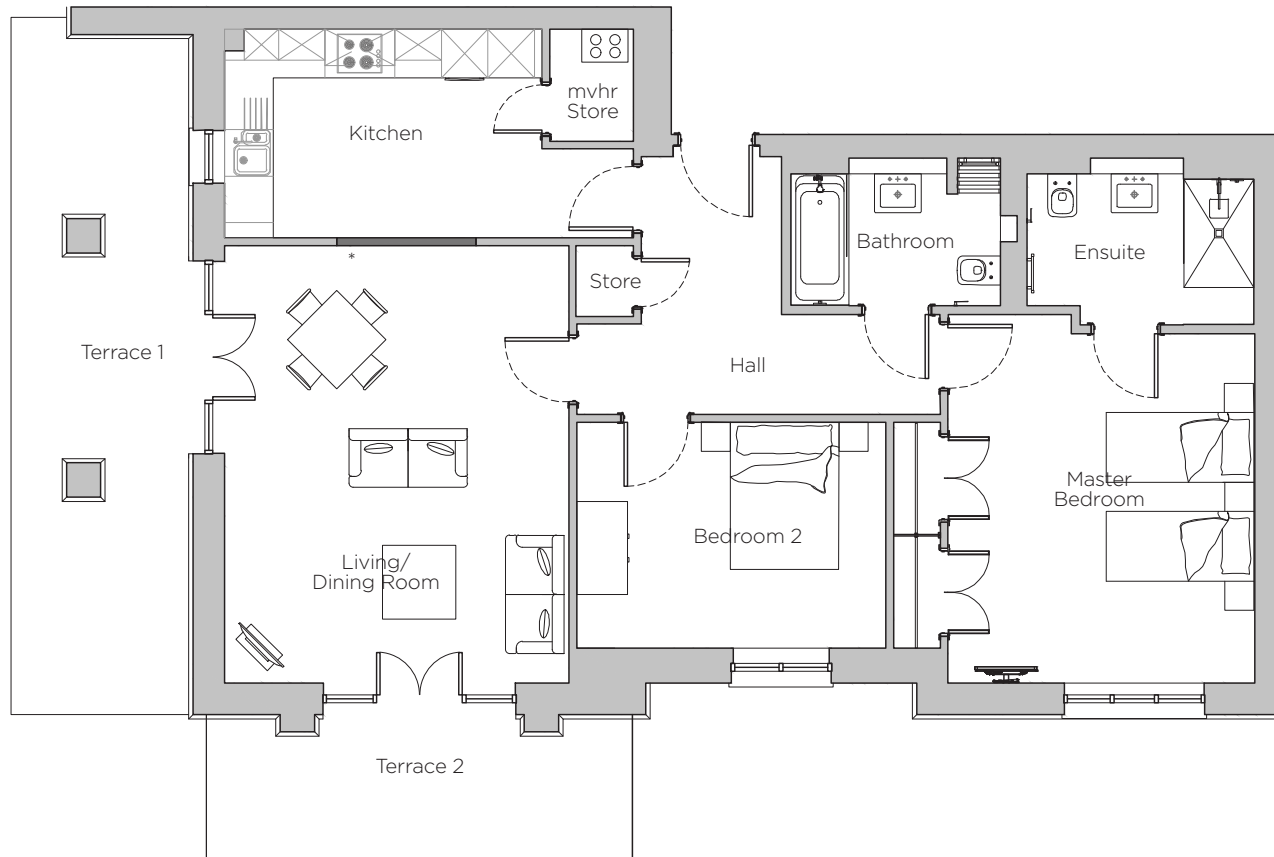


# Audley Stanbridge Earls

Apartment 03 (Plot M03)  
Montgomery Hall, Ground Floor



\* Open plan option available

\*\* Terrace 2 may include handrails subject to planning consent.

Internal Measurements	Metric (m)	Imperial (ft)
Living/Dining Room	4.45 x 5.65	14' 7" x 18' 6"
Kitchen	5.28 x 2.69	17' 4" x 8' 10"
Master Bedroom	3.96 x 4.76	13' 0" x 15' 7"
Bedroom 2	3.99 x 2.92	13' 1" x 9' 7"
Terrace 1	2.30 x 9.00	7' 7" x 29' 6"
Terrace 2	5.50 x 1.90	18' 1" x 6' 3"



Audley Stanbridge Earls  
Awbridge, Nr Romsey, Hampshire, SO51 0ZS  
01794 278303  
www.audleyvillages.co.uk

Drawings are preliminary and may be subject to change pending detailed design. Furniture for illustration purposes only. Built-in wardrobes in bedrooms have not been included in the overall dimensions. Maximum measurements shown. These pages are intended for marketing purposes only. Designs vary according to plot and all details should be checked at the Sales Office. September 2018

