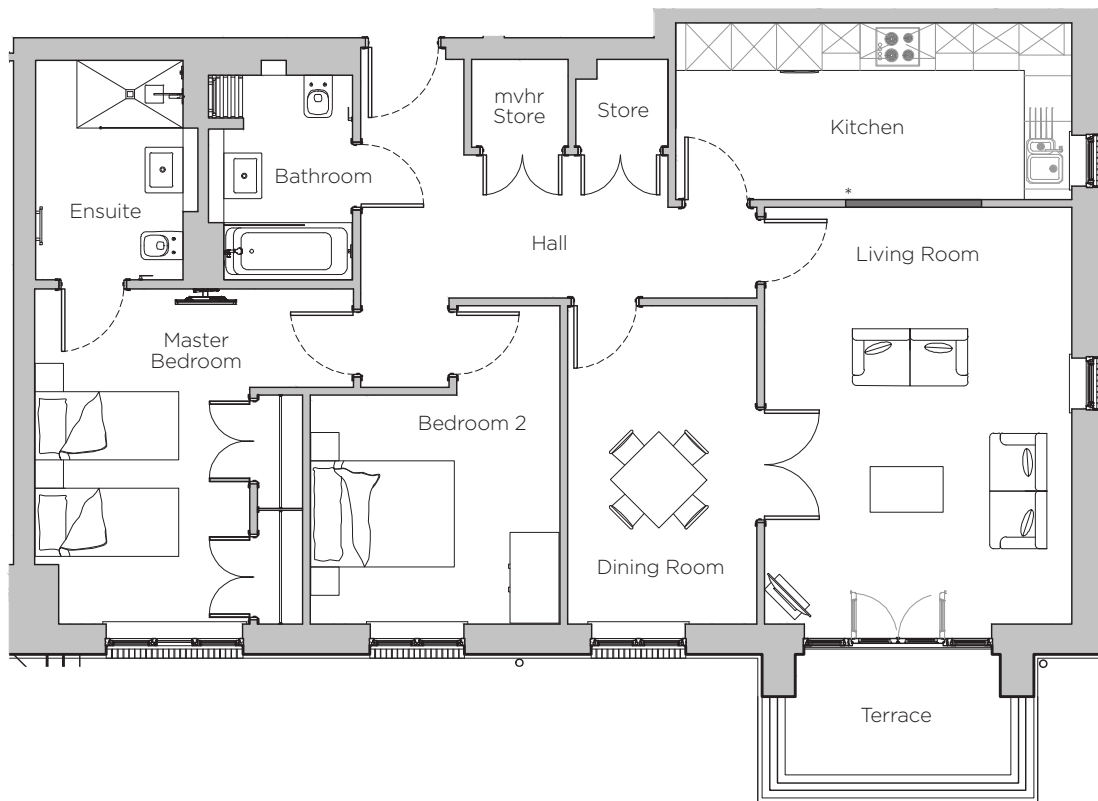


Audley Stanbridge Earls

Apartment 05 (Plot L05)
Nightingale Hall, Ground Floor



* Open plan option available

** Terrace includes handrail

Internal Measurements	Metric (m)	Imperial (ft)
Living Room	5.51 x 4.06	18' 1" x 13' 4"
Dining Room	4.21 x 2.50	13' 10" x 8' 2"
Kitchen	5.24 x 2.34	17' 2" x 7' 8"
Master Bedroom	4.43 x 4.21	14' 6" x 13' 10"
Bedroom 2	4.21 x 3.30	13' 10" x 10' 10"
Terrace	2.98 x 1.67	9' 9" x 5' 6"

Audley Stanbridge Earls
Awbridge, Nr Romsey, Hampshire, SO51 0ZS
01794 278303
www.audleyvillages.co.uk

Drawings are preliminary and may be subject to change pending detailed design. Furniture for illustration purposes only. Built-in wardrobes in bedrooms have not been included in the overall dimensions. Maximum measurements shown. These pages are intended for marketing purposes only. Designs vary according to plot and all details should be checked at the Sales Office. December 2018

