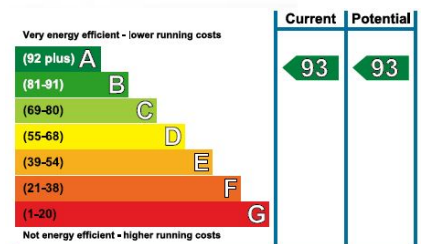
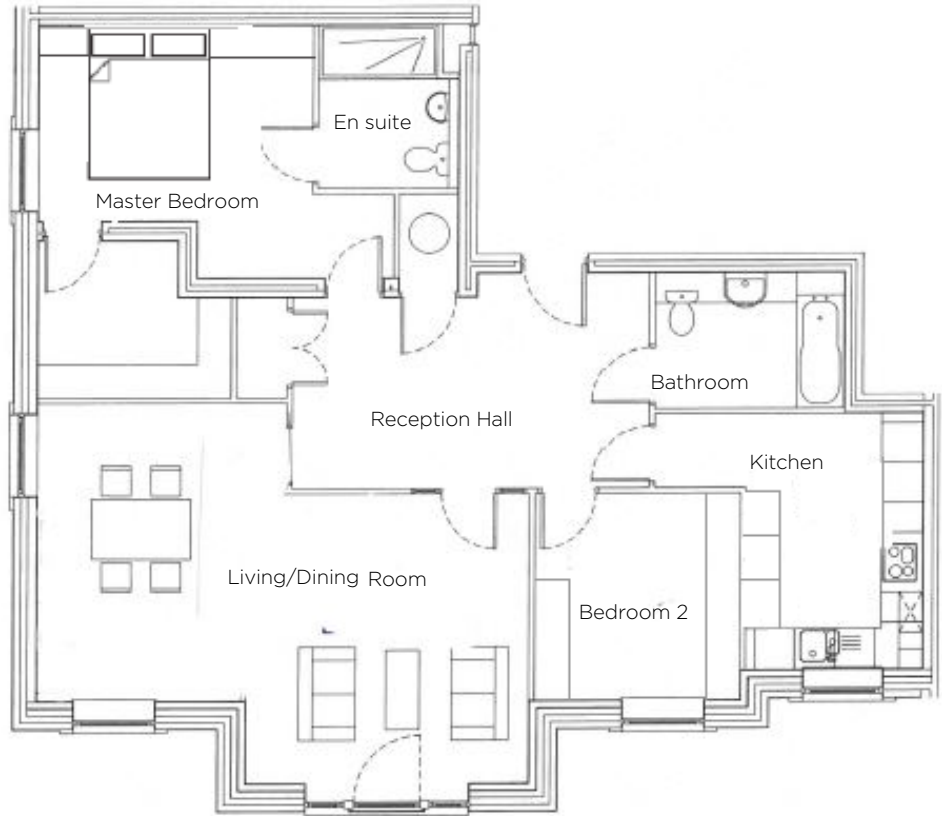


Audley Inglewood

8 Inglewood House
Second Floor Pre-owned Apartment



Internal Measurements	Metric (m)	Imperial (ft)
Kitchen	3.85mx 2.65m	12'8" x 8'8"
Living / Dining room	7.44mx 4.47m	24'5" x 14'8"
Master bedroom	4.10mx 3.00m	13'5" x 9'10"
Bedroom 2	3.10mx 3.05m	10'2" x 10'0"
Total Sq.ft		1145



Audley Inglewood
Templeton Road, Kintbury, Hungerford RG17 9AA
01488 682100 inglewoodsales@audleyvillages.co.uk
www.audleyvillages.co.uk

Built-in wardrobes in bedrooms have not been included in the overall dimensions. Maximum measurements shown. These pages are intended for marketing purposes only. Designs vary according to plot and all details should be checked at the Sales Office. January 2017



Audley Inglewood

8 Inglewood House
Second Floor Pre-owned Apartment



2 bedroom second floor apartment

This large, beautifully presented two bedroom apartment (formerly a three bedroom property which could be reinstated) enjoys a quiet position and lovely garden views. With lots of additional storage, this property offers generous living space.

Property specifications:

- Large light reception room with attractive views
- Master bedroom suite with walk in wardrobe and en suite
- Second bedroom with fitted wardrobes
- Kitchen with ample cupboards and delightful feature window
- Family bathroom
- Large hall with storage

Price £685,000 (other fees apply)

Monthly Management Fee £732.36

Monthly bistro credit £56.33

Annual Ground Rent £250

Viewings by appointment with the sales office.

Audley Inglewood

Templeton Road, Kintbury, Hungerford RG17 9AA

01488 682100 inglewoodsales@audleyvillages.co.uk

www.audleyvillages.co.uk

