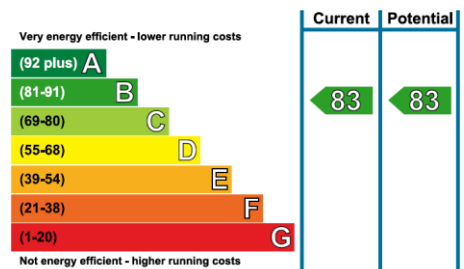


Audley Inglewood

8 Lime Tree Court
Two bedroom first floor apartment



Internal Measurements	Metric (m)	Imperial (ft)
Living/Dining Room	5.36m x 5.24m	17'7" x 17'2"
Kitchen	3.87m x 2.56m	12'8" x 8'5"
Master Bedroom	3.96m x 3.86m	13'0" x 12'8"
Bedroom 2	3.96m x 2.63m	13'0" x 8'7"
Total Sq.ft 1012		



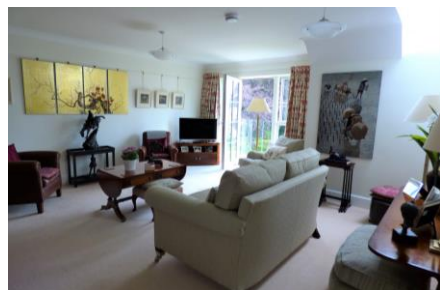
Audley Inglewood
 Templeton Road, Kintbury, Hungerford, RG17 9AA
 01488 682 100 inglewoodsales@audleyvillages.co.uk
www.audleyvillages.co.uk

Built in wardrobes in bedrooms have not been included in the overall dimensions.
 Maximum measurements shown. These pages are intended for marketing purposes only.
 Designs vary according to plot and all details should be checked at the Sales office. April 2021.



Audley Inglewood

8 Lime Tree Court Two bedroom first floor apartment



Two bedroom apartment

A beautifully presented first floor dual aspect apartment that enjoys lovely views over the maintained gardens towards Inglewood House and Lime Tree Court. The generous living room is complemented by a separate SieMatic kitchen with integrated appliances that includes an induction hob. The gracious hall leads to all rooms and offers ample storage facilities. The master bedroom has an en suite shower room, with the guest bedroom and family bathroom nearby.

Property specifications

- Spacious living room
- Separate kitchen/breakfast room
- Master bedroom with fitted wardrobes and an en suite shower room with Villeroy & Boch sanitaryware
- Guest bedroom or study
- Family bathroom

Guide Price £575,000 (other fees apply)

Monthly management fee £809.90

Bistro credit £59.83

Annual Ground rent £500

Viewing by appointment with the sales office.

01488 682 100 inglewoodsales@audleyvillages.co.uk