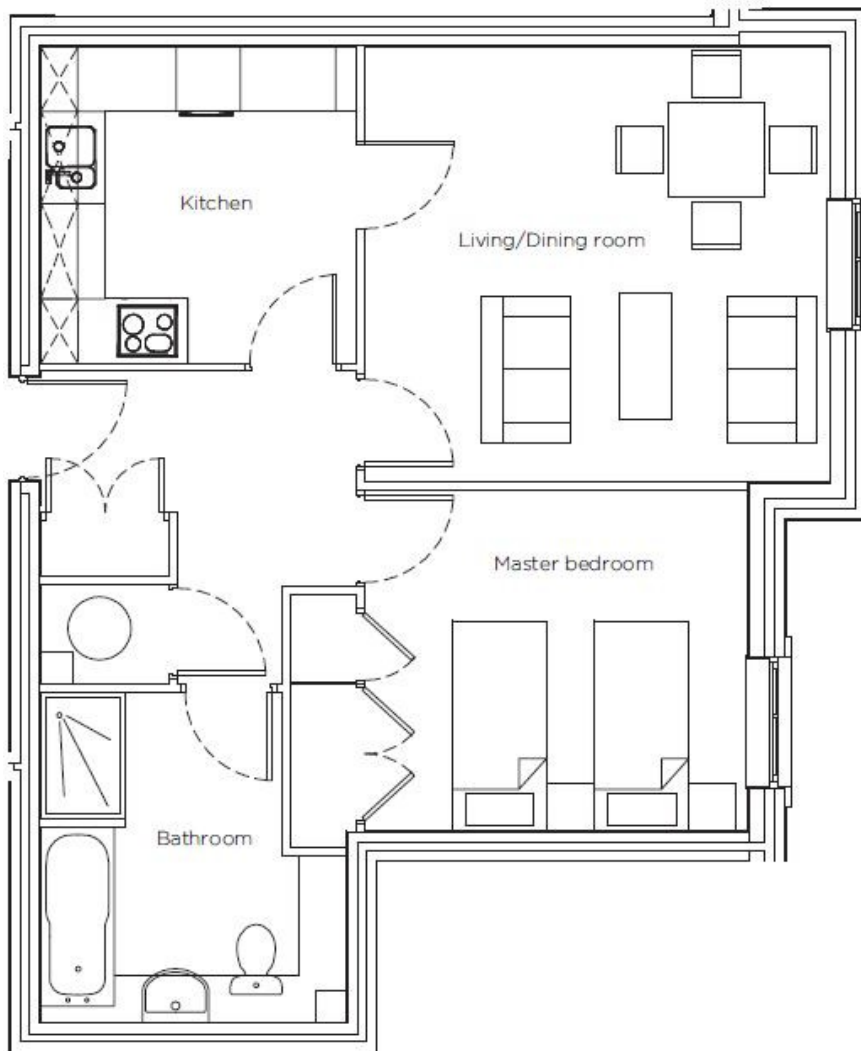


Audley Inglewood

27 Inglewood House
First Floor Resale Apartment

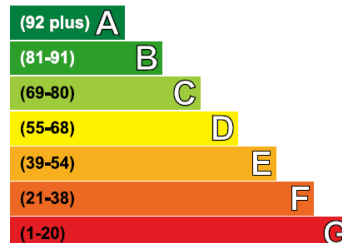


Internal Measurements	Metric (m)	Imperial (ft)
-----------------------	------------	---------------

Kitchen	3.00m x 3.00m	9' 10" x 9' 10"
Living / Dining room	4.40m x 4.15m	14' 5" x 13' 7"
Master bedroom	4.35m x 3.25m	14' 3" x 10' 8"

Total Sq.ft 597

Very energy efficient - lower running costs



Not energy efficient - higher running costs

Current	Potential
94	94

Audley Inglewood
Templeton Road, Kintbury, Hungerford RG17 9AA
01488 682100 inglewoodsales@audleyvillages.co.uk
www.audleyvillages.co.uk

Built-in wardrobes in bedrooms have not been included in the overall dimensions. Maximum measurements shown. These pages are intended for marketing purposes only. Designs vary according to plot and all details should be checked at the Sales Office. January 2017



Audley Inglewood

27 Inglewood House
First Floor Resale Apartment



First floor 1 bedroom apartment

A charming apartment with well laid out accommodation and views across Bevan Court and the gardens. This property features a separate modern kitchen with integrated appliances and a bathroom with a bath and walk in shower.

Property specifications:

- Sunny reception room, with space for a dining table and glazed door that leads through to kitchen
- Separate fully fitted luxury kitchen; integral appliances included
- Bright bedroom with fitted wardrobes
- Bathroom with bath and separate walk in shower
- Excellent views across Bevan Court and the gardens

Guide Price £275,000 (other fees apply)

Monthly management fee £777.90
Bistro credit £59.83
Annual Ground rent £250

Viewings by appointment with the sales office.

Audley Inglewood
Templeton Road, Kintbury, Hungerford RG17 9AA
01488 682100 inglewoodsales@audleyvillages.co.uk
www.audleyvillages.co.uk



Photos for illustration purposes only