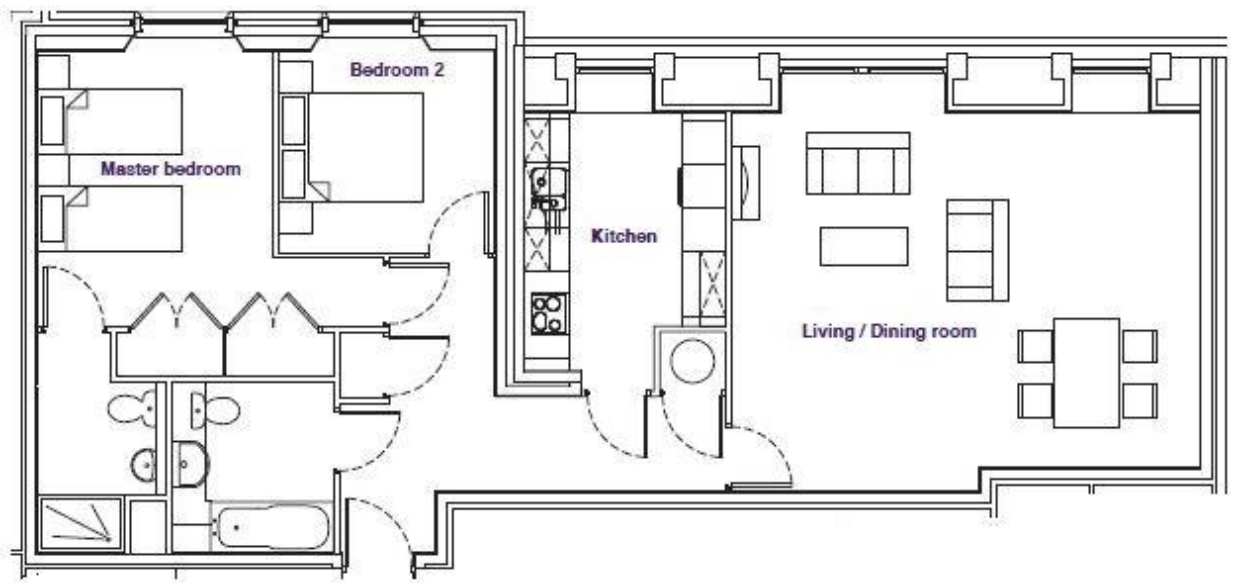
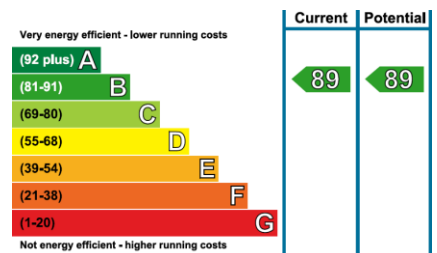


Audley Inglewood

21 Inglewood House
Two bedroom third floor apartment



Internal Measurements	Metric (m)	Imperial (ft)
Living/dining room	6.50m x 5.20m	21'4" x 17'0"
Kitchen	2.80m x 3.55m	9'2" x 11'8"
Master Bedroom	3.25m x 4.50m	10.8" x 14'9"
Bedroom two	3.05m x 2.80m	10.0" x 9'2"
Overall sq ft:	971	



Audley Inglewood
Templeton Road, Kintbury, Hungerford, RG17 9AA
01488 682 100 inglewoodsales@audleyvillages.co.uk
www.audleyvillages.co.uk

Built in wardrobes in bedrooms have not been included in the overall dimensions.
Maximum measurements shown. These pages are intended for marketing purposes only.
Designs vary according to plot and all details should be checked at the Sales office.
August 2020

Audley Inglewood

21 Inglewood House
Two bedroom third floor apartment



Two bedroom third floor apartment

With wonderful far reaching views from the front of Inglewood House, this fine apartment has a generous light filled reception room with ample living space for reading, television, dining and entertaining. This property also features a well laid out kitchen, a good sized master bedroom with ensuite, a guest room or dedicated study, plus a family bathroom. Located within the main house the location offers central living with a lovely rural outlook.

Property specifications

- Large living room with fireplace and fine views
- Generous dining space for entertaining
- Well laid out kitchen with ample storage
- Master bedroom with fitted wardrobes and ensuite shower room
- Guest bedroom or study
- Family bathroom
- Hall with storage cupboards

Guide Price £540,000 (other fees apply)

Monthly management fee £777.90
Bistro credit £59.83
Annual ground rent £250

Viewing by appointment with the sales office.

Audley Inglewood
01488 682 100 inglewoodsales@audleyvillages.co.uk
www.audleyvillages.co.uk

