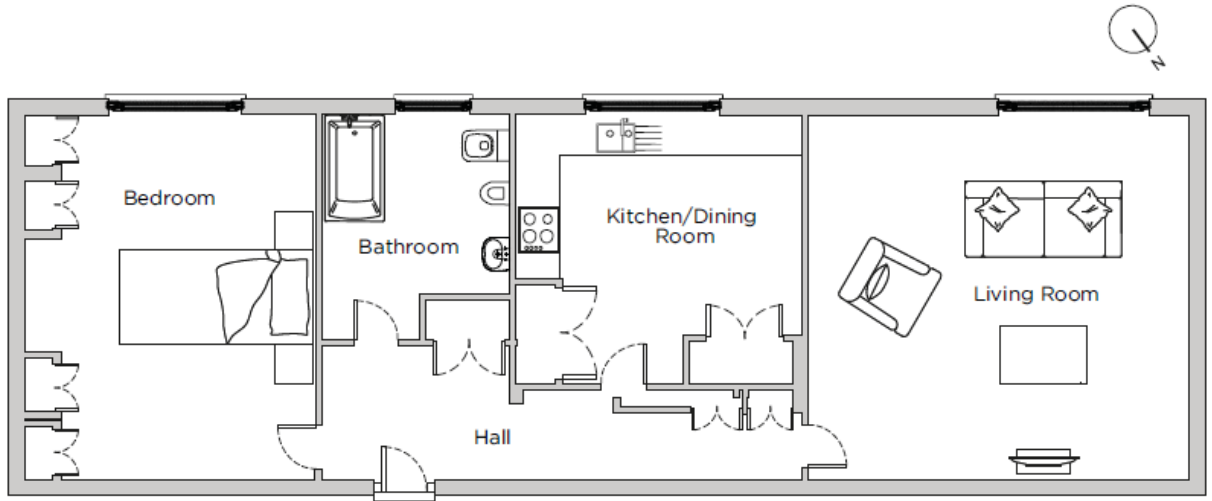


Audley Flete House

Apartment 9
One bedroom, first floor apartment



Internal Measurements	Metric (m)	Imperial (ft)
Living room	4.80 x 5.10	15'9" x 16'9"
Kitchen/Dining Room	3.60 x 3.80	11'10" x 12'6"
Bedroom	4.90 x 3.90	16'1" x 12'9"
Total approximate area	75.9	817'3"

Audley Flete House
Ivybridge, Devon PL21 9NZ
01752 830549
www.audleyvillages.co.uk

Maximum measurements shown. These pages are intended for marketing purposes only.
Designs vary according to plot and all details should be checked with the General Manager.

Audley Flete House

Apartment 9
One bedroom, first floor apartment



One bedroom first floor apartment

An elegant and spacious one bedroom first floor apartment located in the Mildmay Wing. Set within the Grade I Listed magnificent Flete House with twelve acres of manicured gardens.

Property specifications:

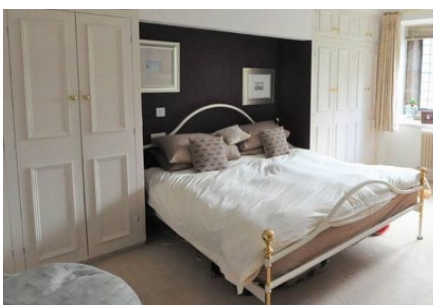
- Fully fitted kitchen with garden views
- Separate living room with granite mullion windows
- Bathroom with shower cubicle
- Hallway with additional storage facilities
- Spacious double bedroom with floor to ceiling built in wardrobes



Guide Price £100,000 (other fees apply)

Monthly management fee £1,130

Viewing by appointment with the General Manager.



Audley Flete House
Ivybridge, Devon PL21 9NZ
01752 830549
www.audleyvillages.co.uk