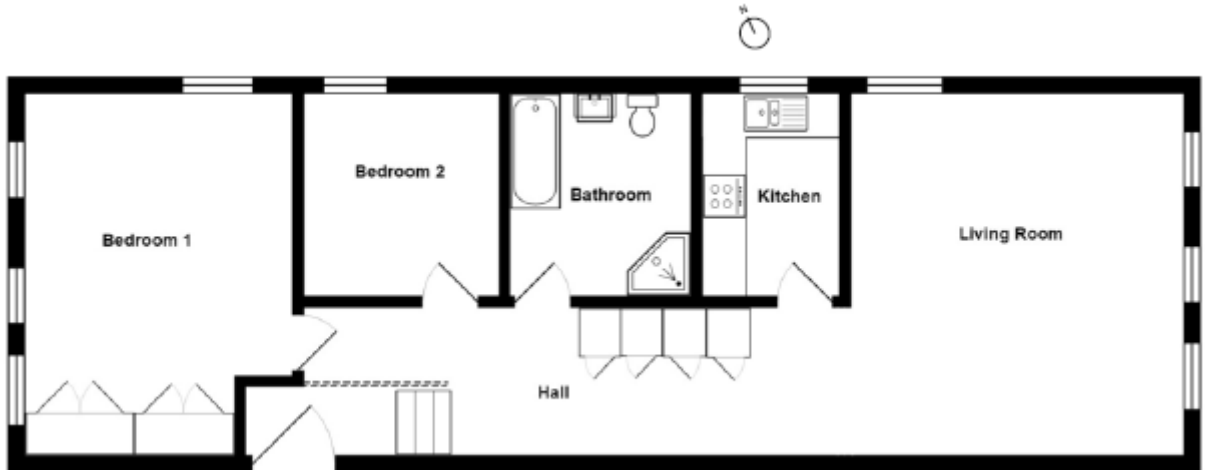


Audley Flete House

5 The Stables

Two bedroom, ground floor apartment



Internal Measurements

Metric (m)

Imperial (ft)

Living room

4.60 x 5.00

15'1" x 16'5"

Bedroom 1

3.70 x 5.00

12'2" x 16'5"

Bedroom 2

2.70 x 2.80

15'1" x 16'5"

Total approximate area

80.2

864"

Audley Flete House
Ivybridge, Devon PL21 9NZ
01752 830549
www.audleyvillages.co.uk

Maximum measurements shown. These pages are intended for marketing purposes only.
Designs vary according to plot and all details should be checked with the General Manager.

Audley Flete House

5 The Stables

Two bedroom, ground floor apartment



Two bedroom ground floor apartment

A stunning ground floor apartment situated in the Stable Block in the grounds of Flete House. This spacious and elegant two bedroom apartment offers excellent accommodation and is beautifully presented throughout.

Property specifications:

- Contemporary kitchen with integrated appliances
- Spacious dual aspect living room with stunning views
- Master bedroom with double fitted wardrobes
- Second bedroom
- Bathroom with a bath and shower above

Guide Price £235,000 (other fees apply)

Monthly management fee £1,130

Viewing by appointment with the General Manager.

Audley Flete House
Ivybridge, Devon PL21 9NZ
01752 830549
www.audleyvillages.co.uk

