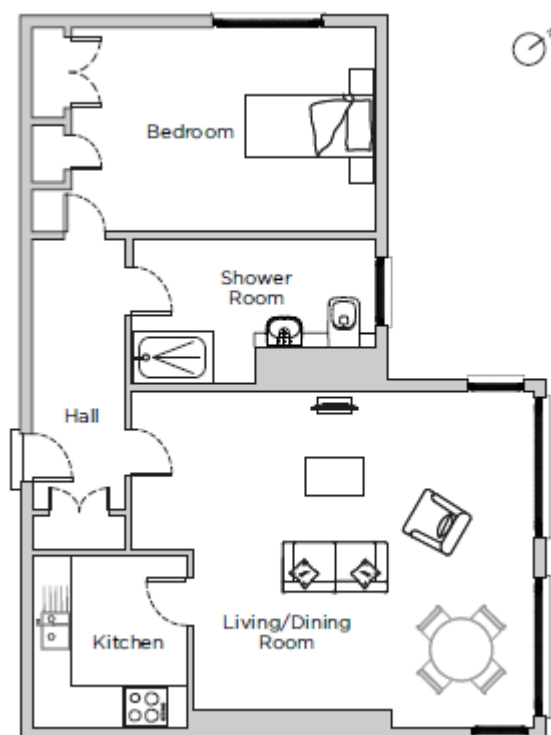


# Audley Flete House

Apartment 18

One bedroom, second floor apartment



Internal Measurements	Metric (m)	Imperial (ft)
Living/Dining Room	4.40 x 5.30	14'5" x 17'5"
Bedroom	2.70 x 4.50	8'10" x 14'9"
Total approximate area	50.7	545'5"

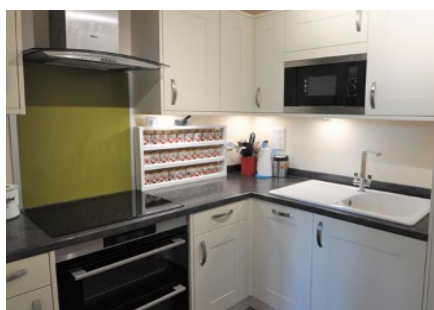
Audley Flete House  
Ivybridge, Devon PL21 9NZ  
01752 830549  
[www.audleyvillages.co.uk](http://www.audleyvillages.co.uk)

Maximum measurements shown. These pages are intended for marketing purposes only.  
Designs vary according to plot and all details should be checked with the General Manager.

# Audley Flete House

18 Flete House

One bedroom, second floor apartment



## One bedroom second floor apartment

A sophisticated one bedroom luxury apartment situated on the second floor and beautifully appointed throughout. Large granite mullion windows with views across the grounds makes this property a perfect place to relax and enjoy the facilities of Flete House.

Property specifications:

- Fully fitted kitchen that leads onto lounge/diner
- Good sized bathroom with shower cubicle
- Hallway with additional storage facilities
- Spacious double bedroom with fitted wardrobes and bookshelves providing plenty of storage
- Views over stable block and beautiful grounds

**Guide Price £100,000** (other fees apply)

Monthly management fee £1,130

Viewing by appointment with the General Manager.

Audley Flete House  
Ivybridge, Devon PL21 9NZ  
01752 830549  
[www.audleyvillages.co.uk](http://www.audleyvillages.co.uk)