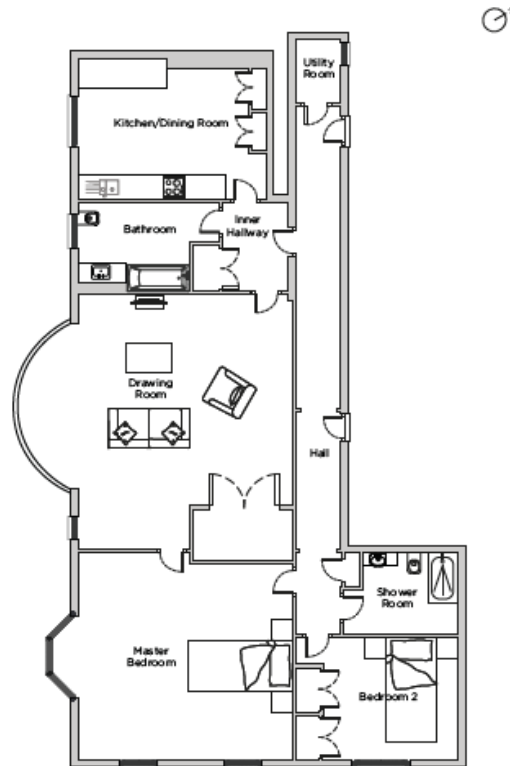


Audley Flete House

Apartment 12
Two bedroom, first floor apartment



Internal Measurements

Metric (m)

Imperial (ft)

Kitchen/Dining room	3.80 x 5.10	12'6" x 16'9"
Drawing room	6.90 x 5.80	22'7" x 19'0"
Master bedroom	5.60 x 5.80	18'4" x 19'0"
Bedroom 2	3.50 x 4.40	11'6" x 14'5"
Total approximate area	157.5	169'5"

Audley Flete House
Ivybridge, Devon PL21 9NZ
01752 830549
www.audleyvillages.co.uk

Maximum measurements shown. These pages are intended for marketing purposes only.
Designs vary according to plot and all details should be checked with the General Manager.

Audley Flete House

Apartment 12
Two bedroom, first floor apartment



Two bedroom first floor apartment

An elegant and beautifully appointed two bedroom first floor apartment set within a Grade I Listed magnificent Devonshire Mansion. Twelve acres of manicured gardens and grand shared spaces.

Property specifications



- Kitchen with integrated appliances
- Separate living room featuring a beautiful fireplace
- Spacious Master bedroom with triple aspect views across the tennis courts, croquet lawn & grounds
- Second double bedroom with fitted wardrobes
- Bathroom with a bath and shower above

Guide Price £450,000 (other fees apply)

Monthly management fee £1,130

Viewing by appointment with the General Manager.



Audley Flete House
Ivybridge, Devon PL21 9NZ
01752 830549
www.audleyvillages.co.uk