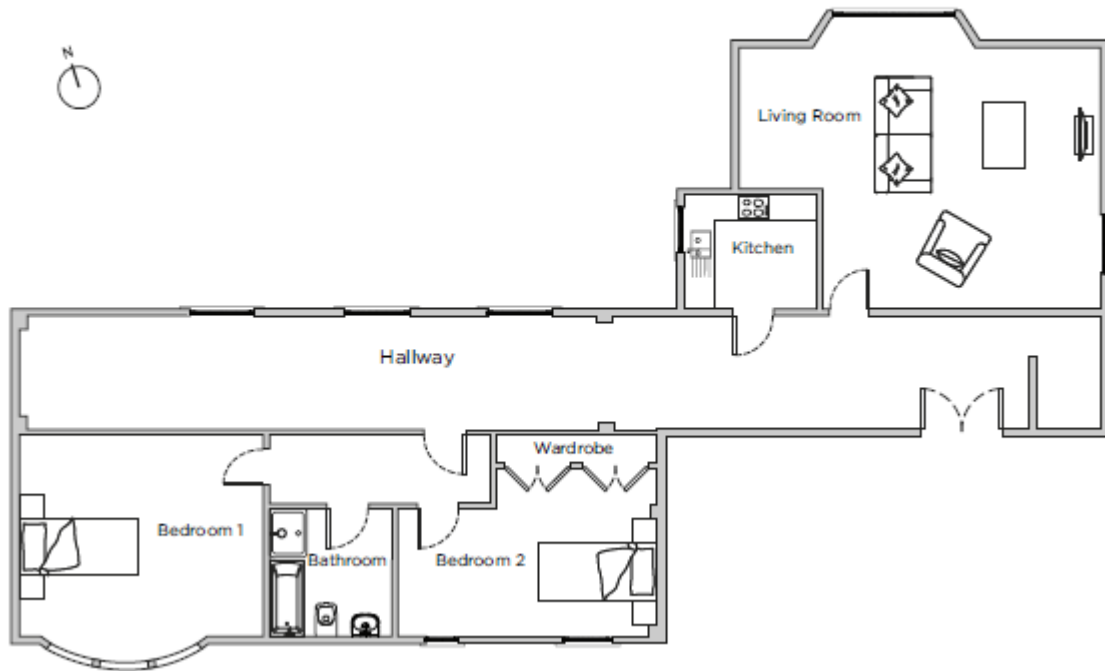


Audley Flete House

Apartment 10
Two bedroom, first floor apartment



Internal Measurements Metric (m) Imperial (ft)

Living room	6.90 x 6.30	22'8" x 20'6"
Kitchen	2.60 x 2.50	8'6" x 8'4"
Bedroom 1	4.70 x 4.40	15'6" x 14'4"
Bedroom 2	5.00 x 4.30	16'5" x 14'0"
Bathroom	3.00 x 2.30	9'9" x 7'8"
Hallway	19.10 x 2.50	62'7" x 8'3"
Total approximate area	148.3	159'7"

Score	Energy rating	Current	Potential
92+	A		
81-91	B		
69-80	C		80 C
55-68	D	67 D	
39-54	E		
21-38	F		
1-20	G		

Audley Flete House
Ivybridge, Devon PL21 9NZ
01752 830549
www.audleyvillages.co.uk

Maximum measurements shown. These pages are intended for marketing purposes only.
Designs vary according to plot and all details should be checked with the General Manager.

Audley Flete House

Apartment 10
Two bedroom, first floor apartment



Two bedroom first floor apartment

This first floor apartment is located within the tower of this Grade I country mansion. With an abundance of character, this spacious apartment offers good living space and wonderful views across the estate and towards Dartmoor. The apartment can be accessed via the main stairway or the lift.

Property specifications

- Modern fully fitted separate kitchen
- Light & bright dual aspect lounge with large bay window
- Fully tiled bathroom with white bathroom suite
- Hallway with additional storage facilities
- Two double bedrooms with wonderful views

Guide Price £250,000 (other fees apply)

Monthly management fee £1,130

Viewing by appointment with the sales office.

Audley Flete House
Ivybridge, Devon PL21 9NZ
01752 830549
www.audleyvillages.co.uk

