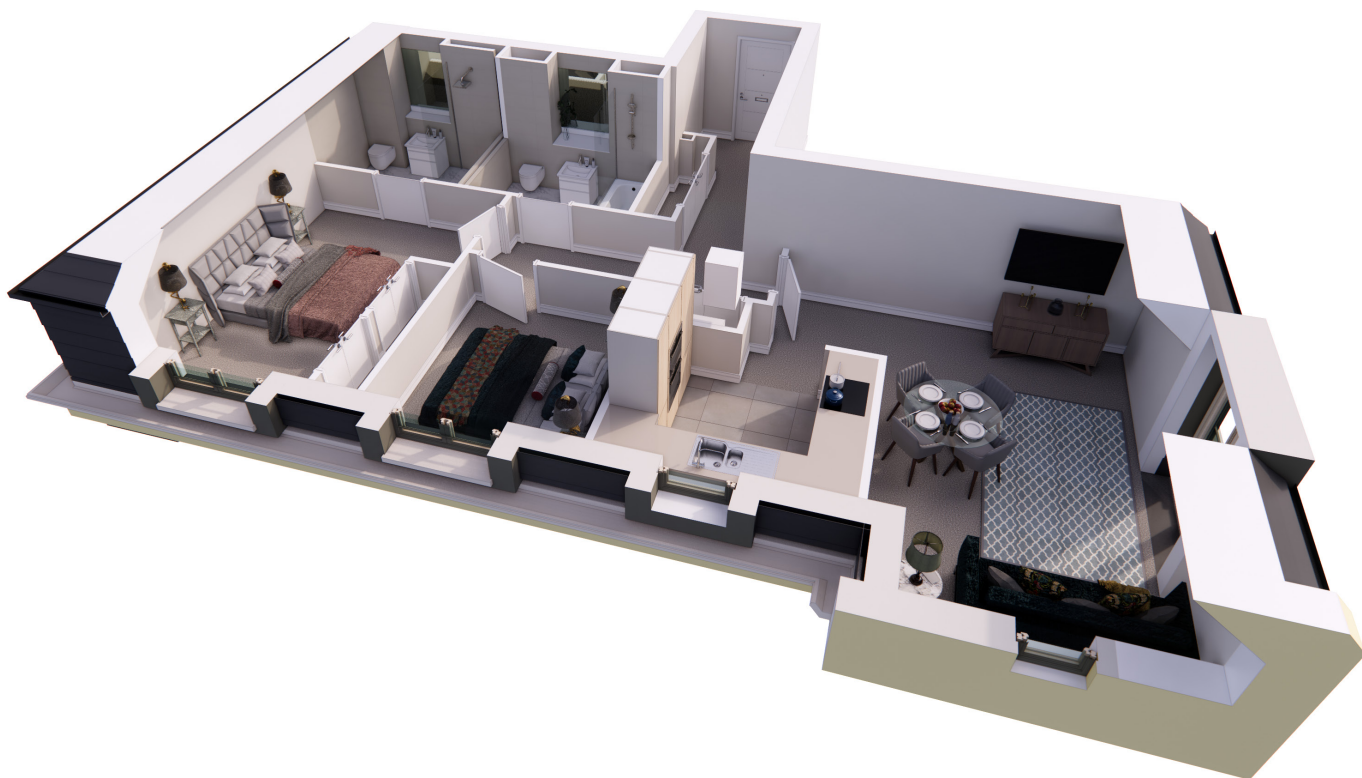


Audley Fairmile

14 Chambers Court (A14)
Second Floor Apartment
Apartment 14



Internal Measurements	Metric (m)	Imperial (ft)
Living/Dining Room	3.33 x 5.77	10'11" x 18'11"
Kitchen	3.10 x 2.56	10'2" x 8'5"
Master Bedroom	2.84 x 4.97	9'4" x 16'4"
Bedroom 2	2.90 x 3.27	9'6" x 10'9"

Audley Fairmile,
Fairmile Lane, Cobham KT11 2BU
01932 366 139
www.audleyvillages.co.uk

These floor plans are illustrative and for marketing purposes only. Maximum measurements are shown with longer dimension quoted first. Dimensions are quoted for the main area of the room only. Built-in wardrobes not included in the overall room dimensions. Furniture shown to illustrate possible room layouts and not included in sale. Designs vary according to plot. All details should be checked at the Sales Office.

August 2021

