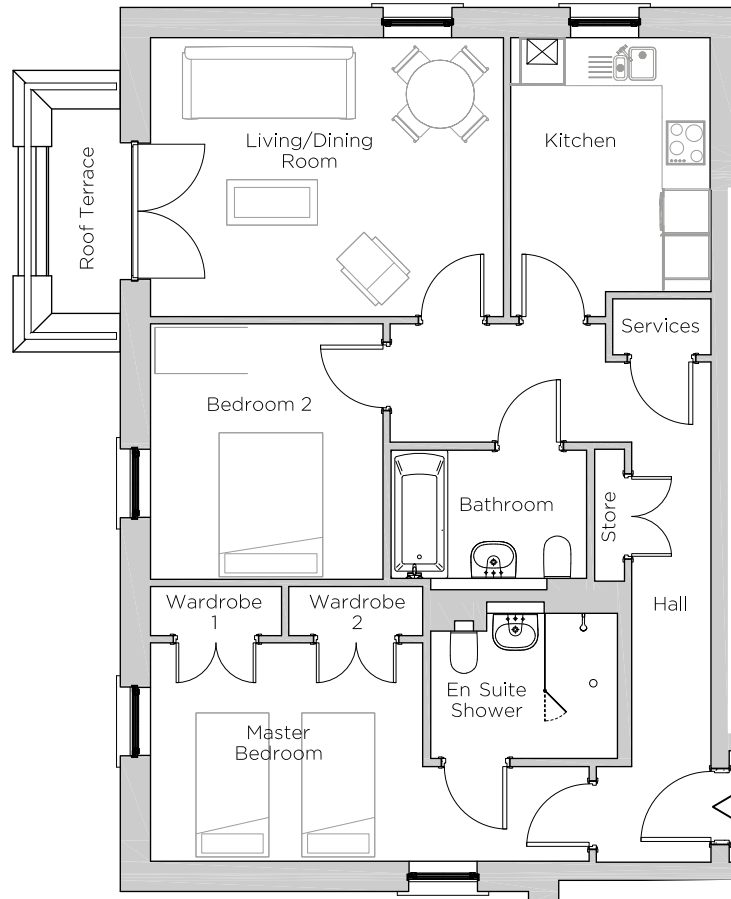


Audley Ellerslie

8 Mason Court
 First Floor Apartment
 Plot 47

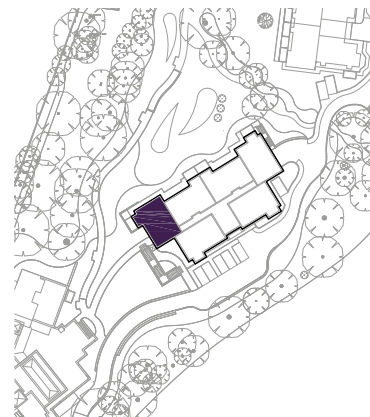


Internal Measurements

Metric (m)

Imperial (ft)

Living/Dining Room	4.67 x 3.69	15'4" x 12'1"
Kitchen	2.64 x 3.36	8'8" x 11'0"
Master Bedroom	3.60 x 2.89	11'10" x 9'6"
Bedroom 2	3.07 x 3.38	10'1" x 11'1"
Terrace	0.91 x 2.70	3'0" x 8'10"



Audley Ellerslie
 Abbey Road, Malvern, Worcestershire WR14 3HL
 01684 438 400
www.audleyvillages.co.uk

These floorplans are illustrative and for marketing purposes only. Maximum measurements are shown. Wardrobes not included in the overall room dimensions. Furniture shown to illustrate possible room layouts and not included in sale. Designs vary according to plot. All details should be checked at the Sales Office.

Audley Ellerslie

8 Mason Court
First Floor Apartment
Plot 47



2 bedroom, ground floor apartment

A first floor apartment with views towards the Main House. Dual-aspect living/dining room. The beautiful SieMatic kitchen has integrated NEFF Appliances.

Property specifications:

- Dual aspect master bedroom with en suite shower room and double fitted wardrobes
- Spacious living/dining room with access to south-west facing terrace
- Luxury SieMatic kitchen with integrated appliances
- Master bathroom featuring Villeroy & Boch sanitary ware

Audley Ellerslie
Abbey Road, Malvern, Worcestershire WR14 3HL
01684 438 400
www.audleyvillages.co.uk

