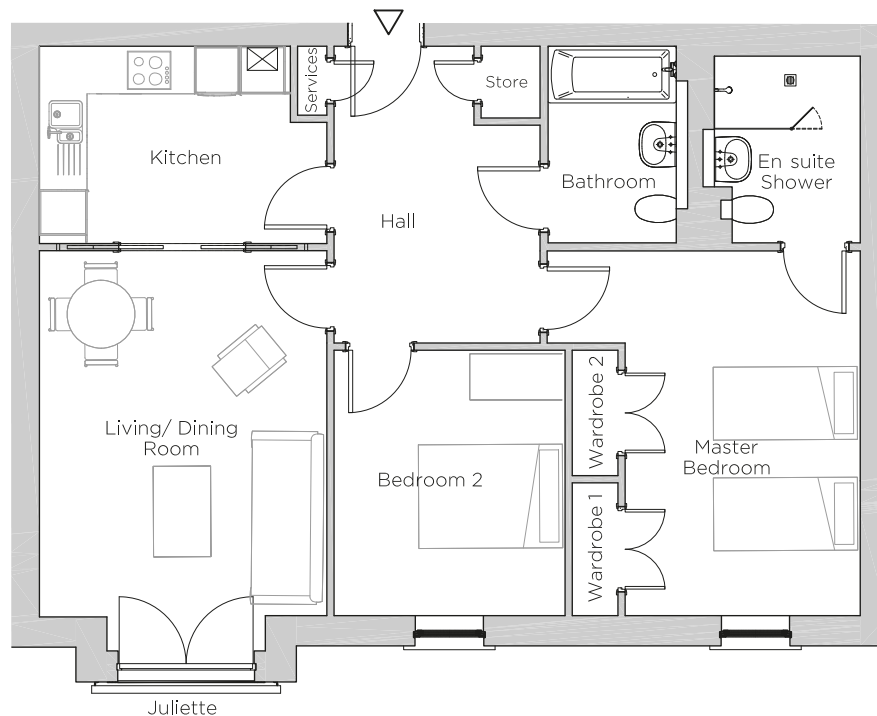


# Audley Ellerslie

8 Lewis Court  
Plot 26



## Internal Measurements

## Metric (m)

## Imperial (ft)

Living/Dining Room	3.80 x 4.84	12'6" x 15'11"
Kitchen	3.32 x 2.61	10'11" x 8'7"
Master Bedroom	3.11 x 4.82	10'2" x 15'10"
Bedroom 2	3.05 x 3.51	10'0" x 11'6"



Audley Ellerslie  
Abbey Road, Malvern, Worcestershire WR14 3HL  
01684 438 400  
[www.audleyvillages.co.uk](http://www.audleyvillages.co.uk)

These floorplans are illustrative and for marketing purposes only. Maximum measurements are shown. Wardrobes not included in the overall room dimensions. Furniture shown to illustrate possible room layouts and not included in sale. Designs vary according to plot. All details should be checked at the Sales Office.

25 September 2017



# Audley Ellerslie

8 Lewis Court  
Plot 26



## 2 bedroom, second floor apartment

Situated on the second floor, this two bedroom home has a master bedroom with double fitted wardrobes and an en-suite shower room. The kitchen has glass pocket sliding doors in to the living/dining room which has an east-facing Juliet balcony.

Property specifications:

- Glazed pocket doors into the lounge for optional open-plan living
- Spacious living room with dining space
- Master bedroom with double fitted wardrobes and en suite shower room
- SieMatic kitchen with integrated appliances
- Second double bedroom

Audley Ellerslie  
Abbey Road, Malvern, Worcestershire WR14 3HL  
01684 438 400  
[www.audleyvillages.co.uk](http://www.audleyvillages.co.uk)

