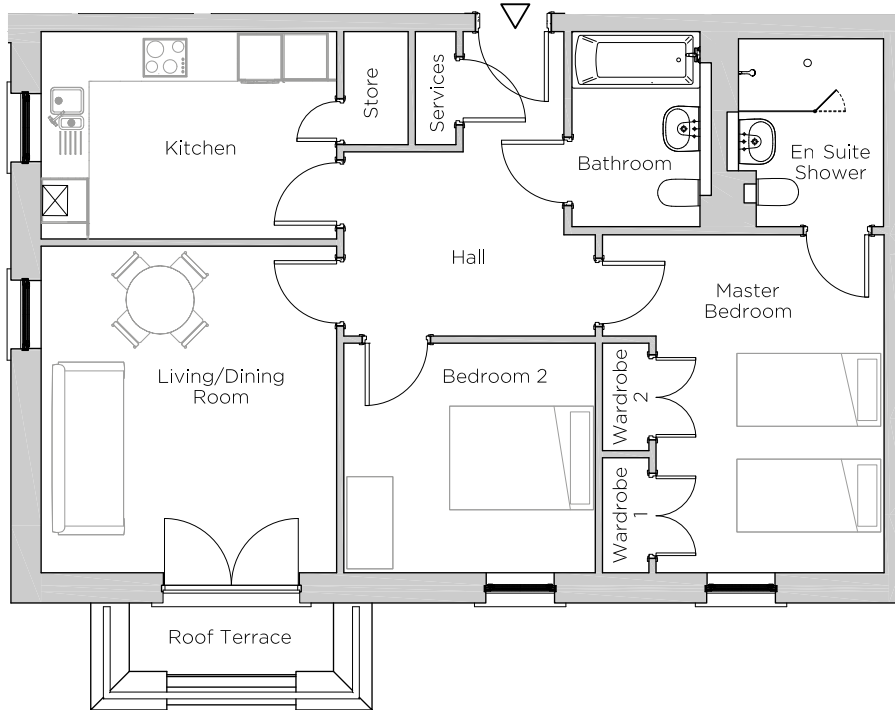


Audley Ellerslie

7 Mason Court
Plot 46

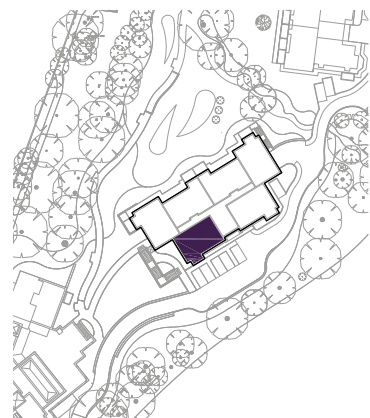


Internal Measurements

Metric (m)

Imperial (ft)

Living/Dining Room	3.91 x 4.32	12'10" x 14'2"
Kitchen	3.91 x 2.74	12'10" x 9'0"
Master Bedroom	3.02 x 4.47	9'11" x 14'8"
Bedroom 2	3.33 x 3.04	10'11" x 10'0"
Roof Terrace	2.70 x 0.91	8'10" x 3'0"



Audley Ellerslie
Abbey Road, Malvern, Worcestershire WR14 3HL
01684 438 400
www.audleyvillages.co.uk

These floorplans are illustrative and for marketing purposes only. Maximum measurements are shown. Wardrobes not included in the overall room dimensions. Furniture shown to illustrate possible room layouts and not included in sale. Designs vary according to plot. All details should be checked at the Sales Office.

25 September 2017



Audley Ellerslie

7 Mason Court
Plot 46



2 bedroom, second floor apartment

A two bed apartment with a living room that has space for a dining table and has an east-facing roof terrace with views over the Severn Valley.

The master bedroom has two built-in wardrobes and an en suite shower room.

This apartment is located in Mason Court which features undercroft parking.

Property specifications:

- Fully equipped SieMatic kitchen with Corian worktops
- Undercroft parking
- Roof terrace with views
- Lift access

Audley Ellerslie
Abbey Road, Malvern, Worcestershire WR14 3HL
01684 438 400
www.audleyvillages.co.uk

