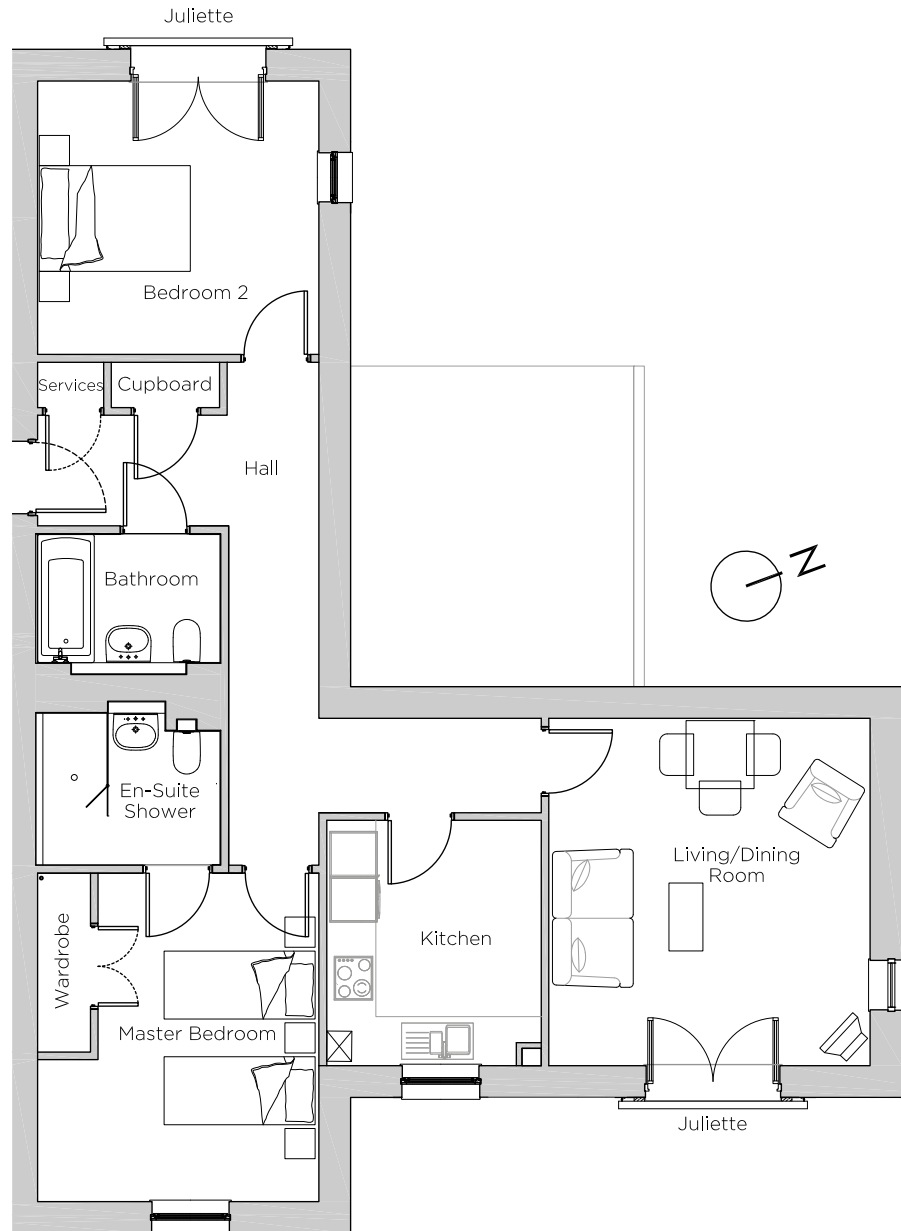


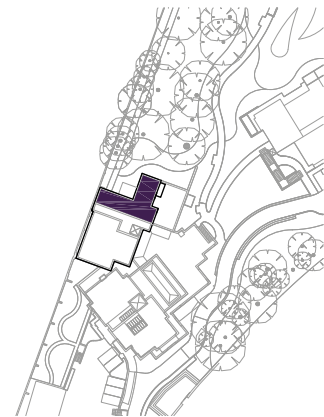
Audley Ellerslie

7 Adkins Court
Third Floor Apartment
Plot 39



Internal Measurements

	Metric (m)	Imperial (ft)
Living/Dining Room	4.25 x 4.60	14'0" x 15'1"
Kitchen	2.84 x 3.25	9'4" x 10'8"
Master Bedroom	2.92 x 4.35	9'7" x 14'3"
Bedroom 2	3.72 x 3.26	12'3" x 11'11"



Audley Ellerslie
Abbey Road, Malvern, Worcestershire WR14 3HL
01684 438 400
www.audleyvillages.co.uk

These floorplans are illustrative and for marketing purposes only. Maximum measurements are shown. Wardrobes not included in the overall room dimensions. Furniture shown to illustrate possible room layouts and not included in sale. Designs vary according to plot. All details should be checked at the Sales Office.

Audley Ellerslie

7 Adkins Court
Third Floor Apartment
Plot 39



2 bedroom third floor apartment

This top floor apartment is located adjacent to the Main House for easy access to the village facilities. The dual aspect living/dining room features a Juliette balcony with stunning views across the Worcestershire countryside.

Property specifications:

- Located adjacent to the Main House
- Stunning countryside views
- SieMatic kitchen with integrated appliances
- Master bedroom with en-suite shower room and fitted wardrobe
- Master bathroom featuring Villeroy & Boch sanitary ware

Audley Ellerslie
Abbey Road, Malvern, Worcestershire WR14 3HL
01684 438 400
www.audleyvillages.co.uk

