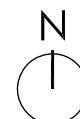
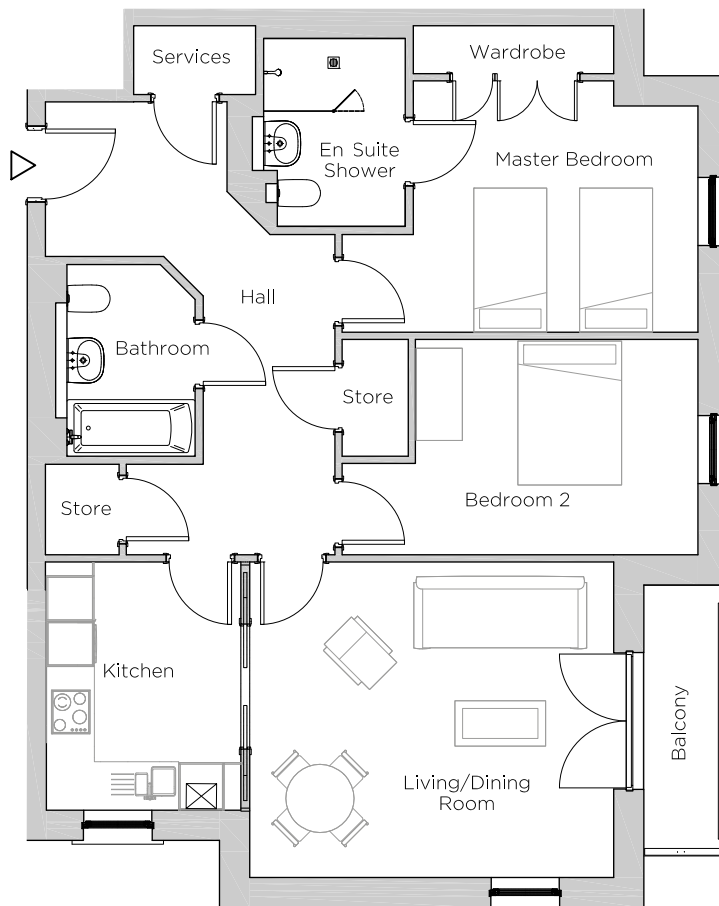


Audley Ellerslie

6 Vines Court
Plot 85

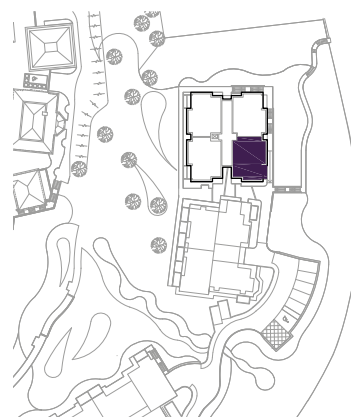


Internal Measurements

Metric (m)

Imperial (ft)

Living/Dining Room	4.81 x 4.17	15'10" x 13'8"
Kitchen	3.28 x 2.57	10'9" x 8'5"
Master Bedroom	3.75 x 3.32	12'4" x 10'11"
Bedroom 2	3.74 x 2.85	12'3" x 9'4"
Balcony	3.49 x 0.98	11'5" x 3'3"



Audley Ellerslie
Abbey Road, Malvern, Worcestershire WR14 3HL
01684 438 400
www.audleyvillages.co.uk

These floorplans are illustrative and for marketing purposes only. Maximum measurements are shown. Wardrobes not included in the overall room dimensions. Furniture shown to illustrate possible room layouts and not included in sale. Designs vary according to plot. All details should be checked at the Sales Office.

25 September 2017



Audley Ellerslie

6 Vines Court
Plot 85



2 bedroom, first floor apartment

This two double bedroom apartment has a spacious hallway with a guest bathroom and two large storage cupboards.

The kitchen has glazed pocket sliding doors in to the dual-aspect living/dining room which has patio doors out on to an east-facing balcony with views over the Severn Valley.

The master bedroom has double fitted wardrobes and an en suite shower room.

Property specifications:

- Glazed pocket doors in the kitchen for optional open plan living
- Generous storage cupboards
- Luxury Villeroy & Boch bathrooms with elegant Hansgrohe fittings
- Lift access

Audley Ellerslie
Abbey Road, Malvern, Worcestershire WR14 3HL
01684 438 400
www.audleyvillages.co.uk

